

Lots 1A → 4B, Sub#2, Sect 4, T1N, R7E, BHM

04SV005



Surveyor's Note:

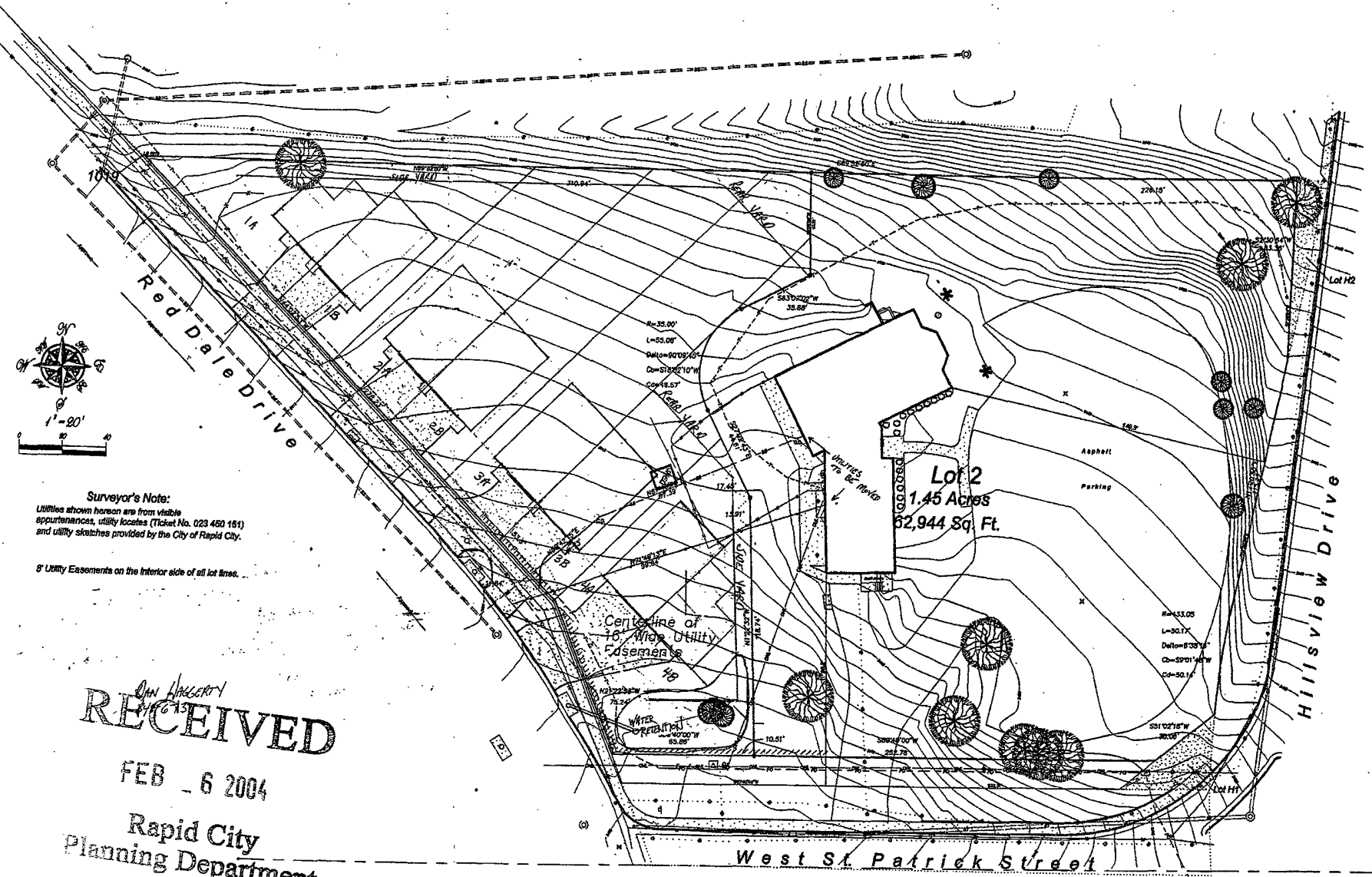
Utilities shown hereon are from visible appurtenances, utility locates (Ticket No. 023 460 161) and utility sketches provided by the City of Rapid City.

8' Utility Easements on the interior side of all lot lines.

RECEIVED

FEB 6 2004

Rapid City Planning Department



PROJECT NO. 02229  
1330 MAIN STREET, P.O. BOX 2634  
RAPID CITY, SOUTH DAKOTA 57709  
(605) 346-1338 FAX (605) 346-1172

DESIGNED BY: GEF  
DRAWN BY: GEF  
CHECKED BY: JF  
FISK LAND SURVEYING  
AND CONSULTING ENGINEERS, INC.

Site Plan - Lot 1 - SW1/4 SW1/4 Section 4, T1N, R7E, BHM  
Rapid City, South Dakota  
Canyon Lake Church of God - 1829 Hillsview Drive