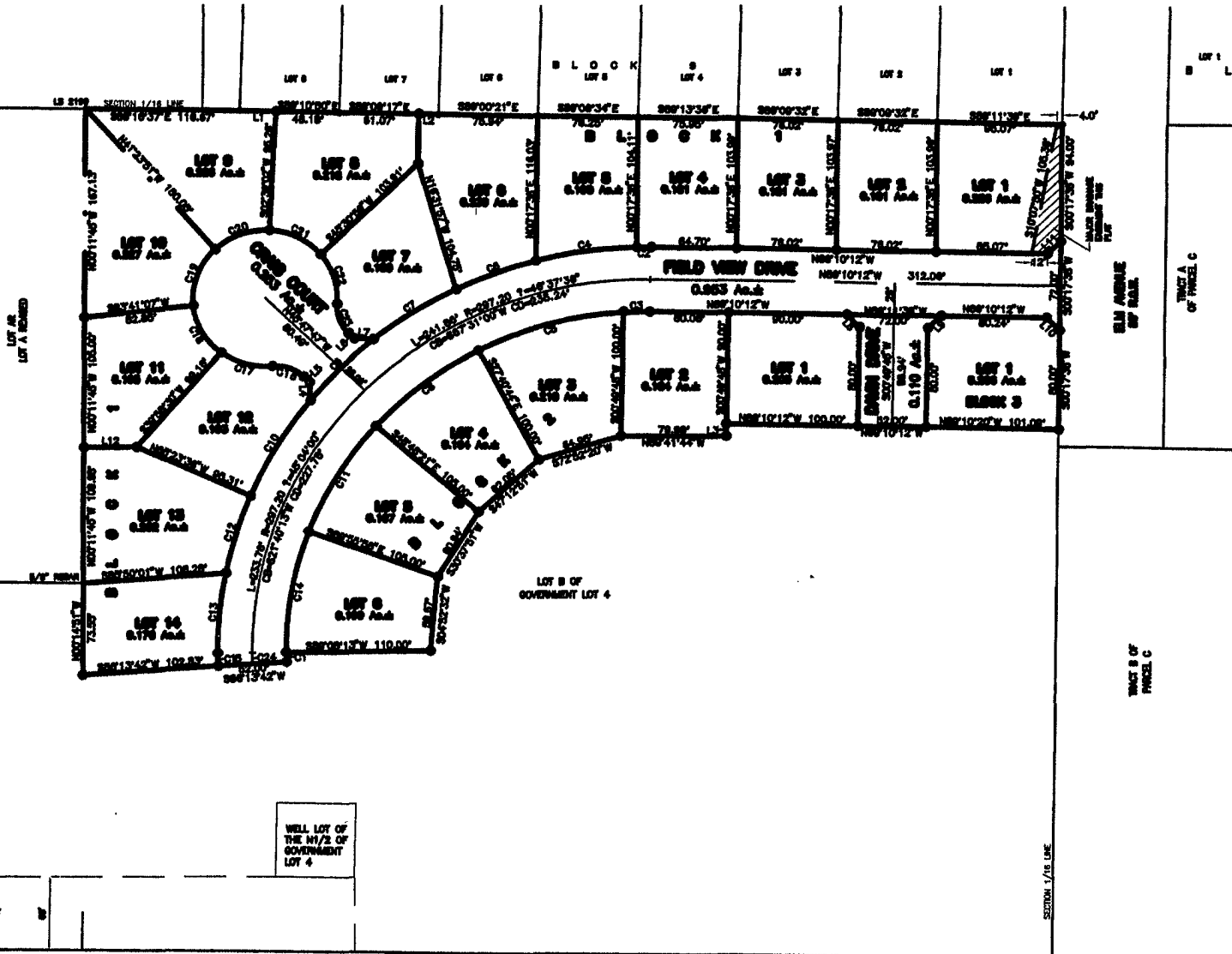


PLAT OF
**LOTS 1 THRU 14 OF BLOCK 1, LOTS 1 THRU 6 OF BLOCK 2,
 AND LOT 1 OF BLOCK 3**
KENNSINGTON HEIGHTS SUBDIVISION
 (formerly a portion of Lot B of Government Lot 4)
 LOCATED IN THE SW¹/₄ OF THE SW¹/₄
 SECTION 18, T1N, R8E, BHM
 RAPID CITY, PENNINGTON COUNTY, SOUTH DAKOTA

04PL001



RECEIVED

JAN 09 2004

Rapid City
 Planning Department

JANUARY 9, 2004

N.T.S.

C:\Drawings\15621562\PLAT.dwg, 8x11, 1/9/2004 8:06:22 AM