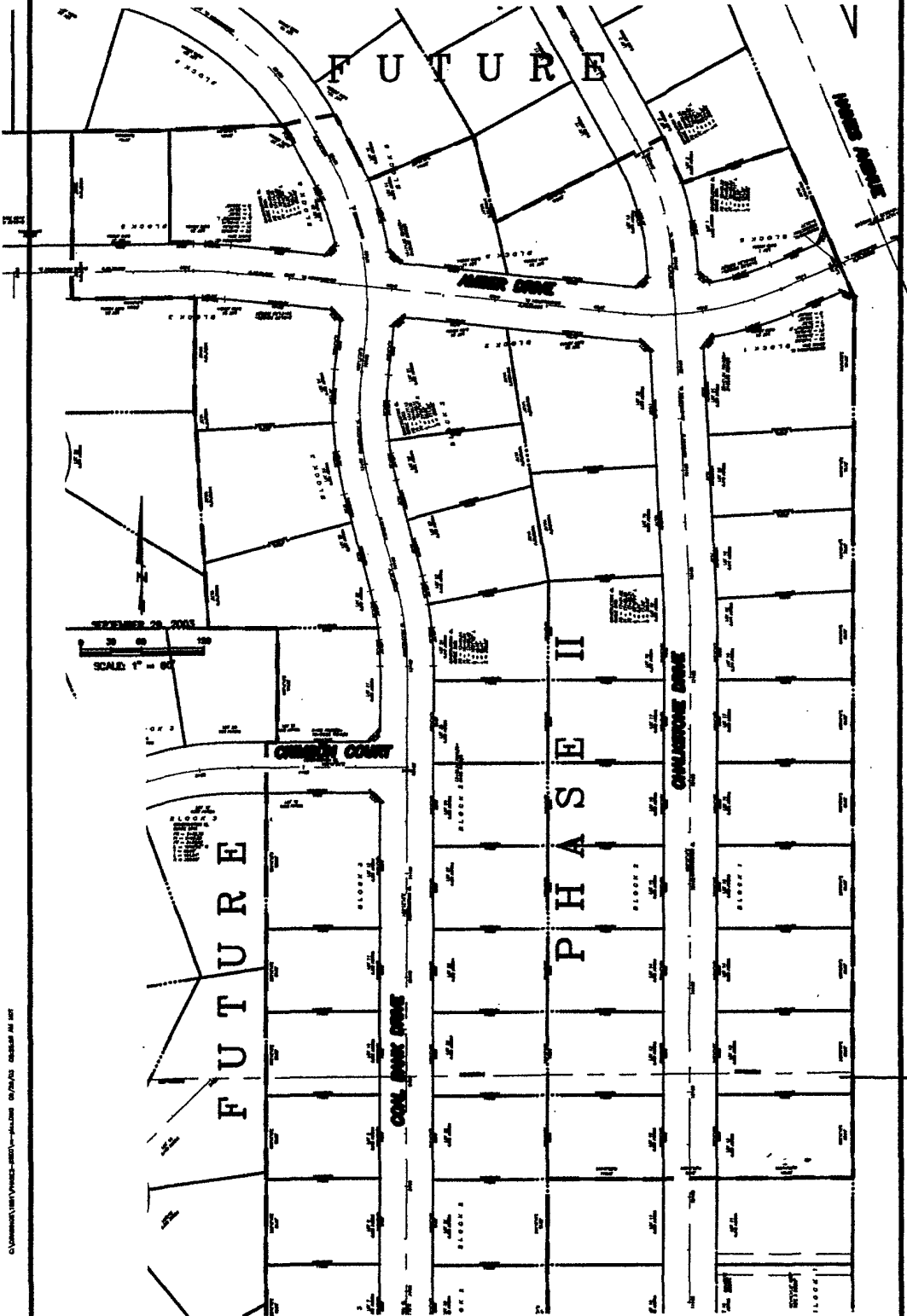
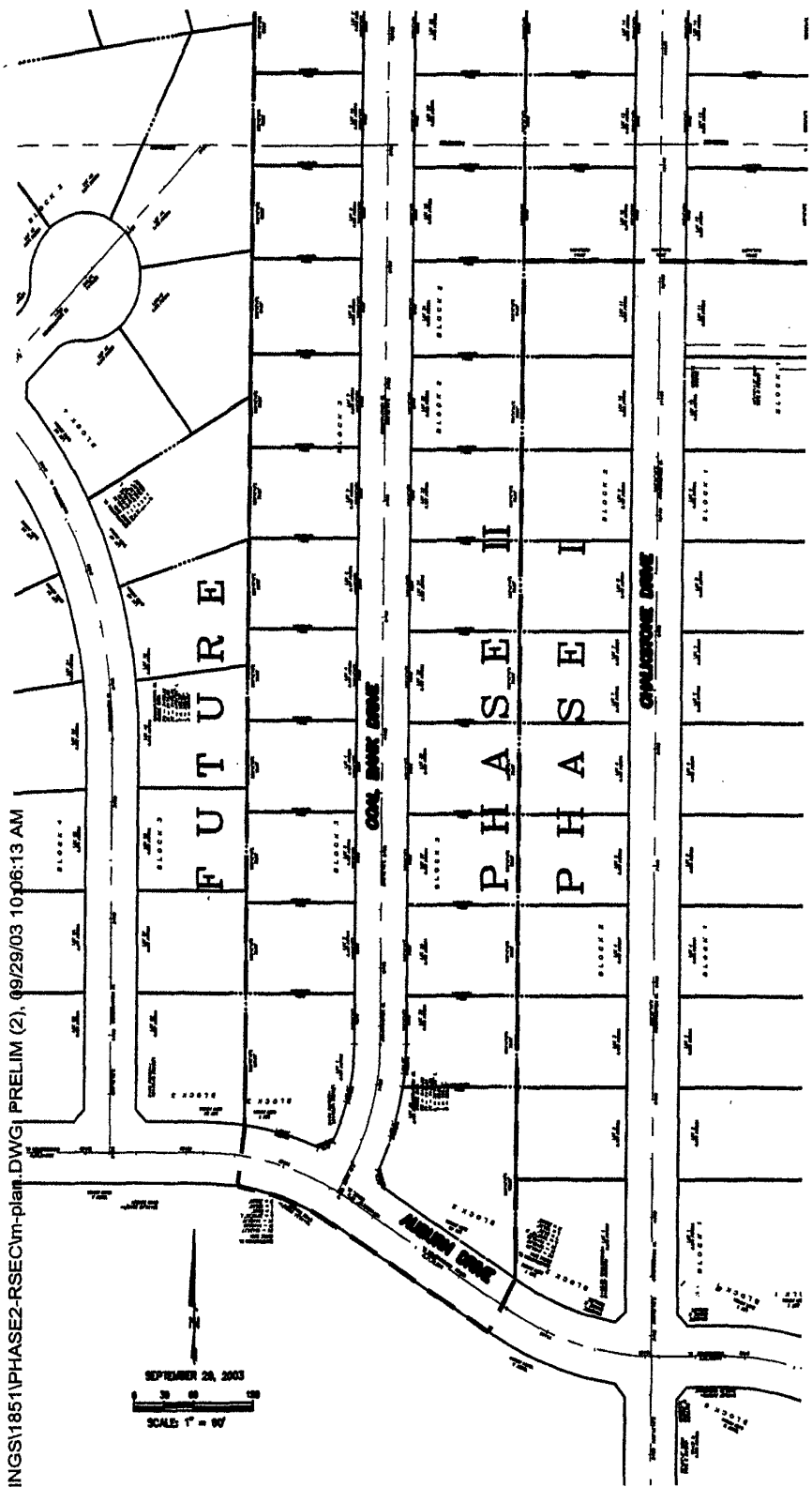


PLAT OF
LOTS 12-21 BLOCK 1, LOTS 12-40 BLOCK 2, LOTS 1-12 & 21-24 BLOCK 3
AND LOTS 1, 13, 14, 30, & 31 BLOCK 5 OF AUBURN HILLS SUBDIVISION
 (FORMERLY A PORTION OF THE NW¹/₄ OF THE SW¹/₄ AND THE SW¹/₄ OF THE NW¹/₄)
 LOCATED IN THE NW¹/₄ OF SW¹/₄ AND
 THE SW¹/₄ OF NW¹/₄
 SECTION 13, T2N, R7E, B1M,
 RAPID CITY, PENNINGTON COUNTY, SOUTH DAKOTA



PLAT OF
LOTS 12-21 BLOCK 1, LOTS 12-40 BLOCK 2, LOTS 1-12 & 21-24 BLOCK 3
AND LOTS 1, 13, 14, 30, & 31 BLOCK 5 OF AUBURN HILLS SUBDIVISION
 (FORMERLY A PORTION OF THE NW¼ OF THE SW¼ AND THE SW¼ OF THE NW¼)
 LOCATED IN THE NW¼ OF SW¼ AND
 THE SW¼ OF NW¼
 SECTION 13, T2N, R7E, B1M,
 RAPID CITY, PENNINGTON COUNTY, SOUTH DAKOTA



DRAWINGS1851\PHASE2-RSECTm-plan.DWG | PRELIM (2), 09/29/03 10:06:13 AM

SEPTEMBER 28, 2003
 SCALE 1" = 60'