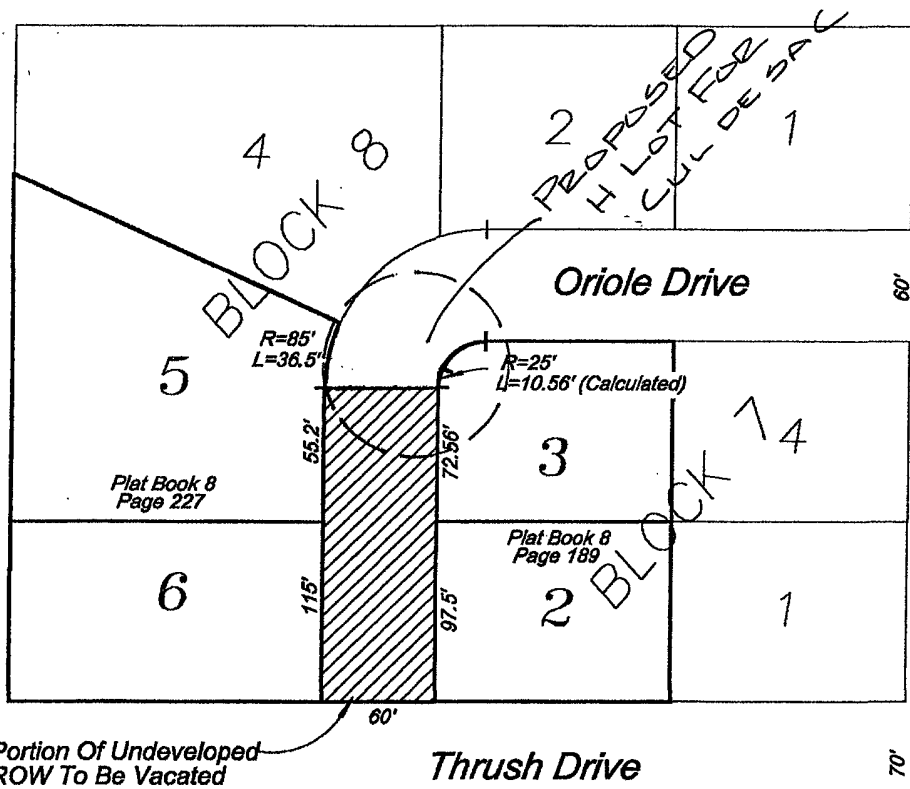
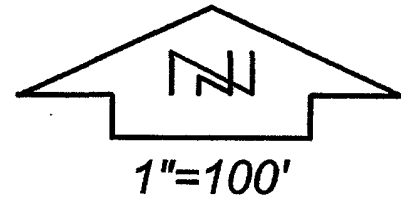


EXHIBIT A

03PL125

VACATION OF A PORTION OF UNDEVELOPED ORIOLE DRIVE RIGHT-OF-WAY
ADJOINING LOTS 2 AND 3 IN BLOCK 7 AND LOTS 5 AND 6 IN BLOCK 8 OF LOT A
OF MORNINGSIDE ADDITION ADDENDUM,
RAPID CITY, PENNINGTON COUNTY, SOUTH DAKOTA



Portion Of Undeveloped ROW To Be Vacated

Dimensions Shown Are Of Record,
Or As Otherwise Indicated

Note: Please review as an alternate option in lieu of platting the property.



PREPARED BY:
FISK LAND SURVEYING & CONSULTING ENGINEERS, INC.
P.O. BOX 8154, RAPID CITY, SD 57709 (605) 348-1538 OCT. 20, 2003

Revised 12-12-03

NO.03-10-05