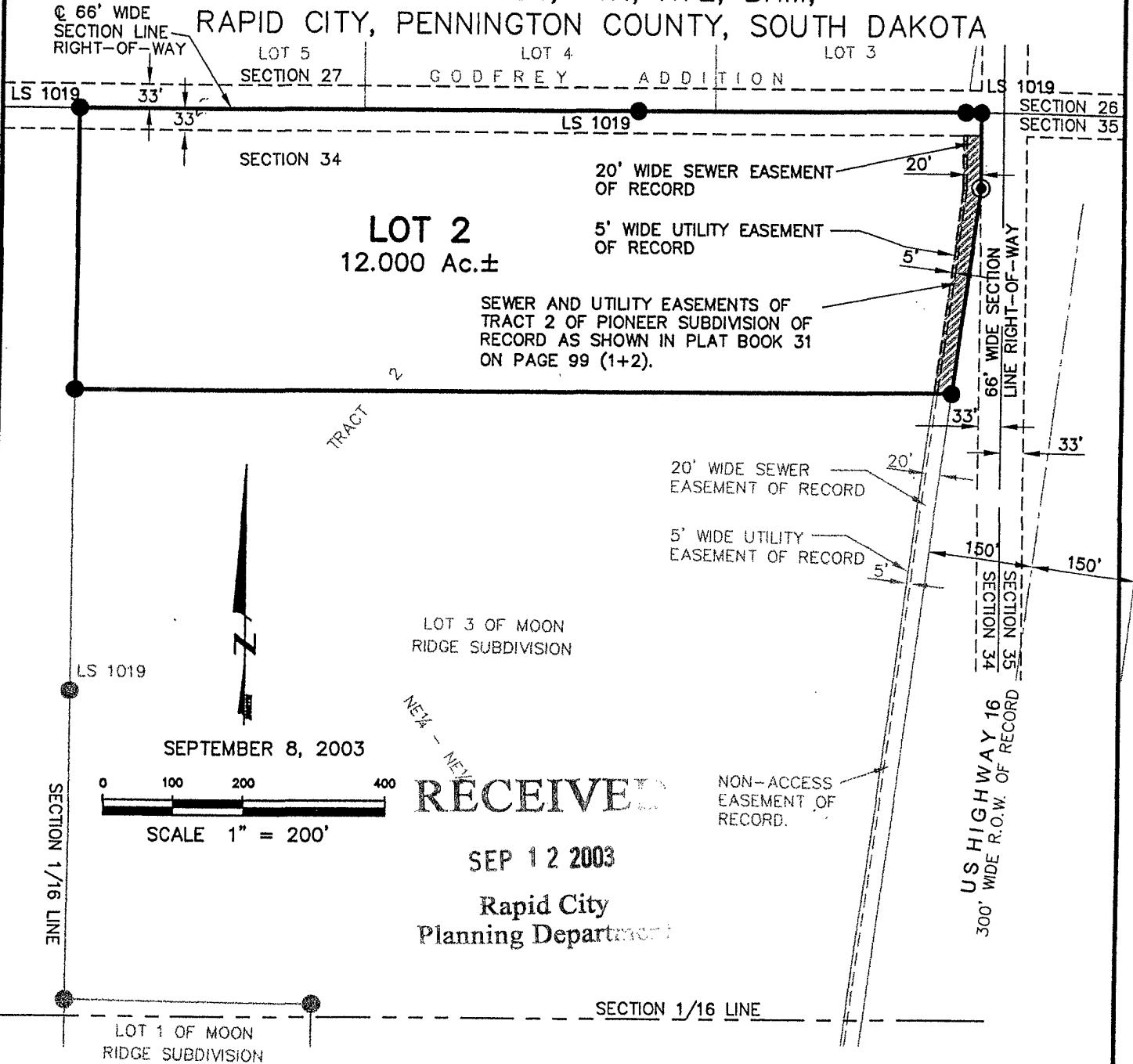


# PLAT OF LOT 2, MOON RIDGE SUBDIVISION,

(formerly a portion of Tract 2 of Pioneer Subdivision)  
LOCATED IN THE NE1/4 OF THE NE1/4,  
SECTION 34, T1N, R7E, BHM,  
RAPID CITY, PENNINGTON COUNTY, SOUTH DAKOTA



**RECEIVED**

SEP 12 2003

Rapid City  
Planning Department



**Renner & Sperlich Engineering Co.**

616 Sixth St. \* Rapid City, SD 57701 \* 605/342-1191  
FAX: 605/342-1405 \* E-MAIL: RSEC@RAPIDNET.COM

C:\Drawings\_JMM\1541\L2 MOON.dwg 09/08/03 04:45:18 PM MDT