

03SV044

LOT 13 & TRACT A, BLOCK 4;

LOTS 6-12, BLOCK 16;

LOTS 1A-12A, LOTS 1B-12B & TRACT B, BLOCK 1B;

TRACT C AND DEDICATED STREETS

LOCATED IN THE N^{1/2}SW^{1/4}SE^{1/4} AND SW^{1/4}NE^{1/4} OF SECTION 3, T1N, R8E, B.H.M.,
CITY OF RAPID CITY, PENNINGTON COUNTY, SOUTH DAKOTA

B I G S K Y S U B D I V I S I O N
B L O C K 5 1 , P A G E 5 0 (1 & 2)
T R A C T A

N00°09'38"W 1324.04'

802.89'

K. SIG. LINE

AURORA
AND
DRIVE

1324.04'

1324.04'

FIND
CORNER
LOT 2

1325.57'

STREET

1139.26'

N89°51'34"E 1325.88'

N89°51'34"E 1325.96'

TRACT C
24.397 ACRES

1325.57'

S89°58'18"W

UNPLATTED
PORTION OF
POLYLINE^{1/4}
SECTION 3,
T1N, R8E, BHM

CARL
AND
AVENUE



100'
200'
300'

SCALE: 1 INCH = 100 FEET

800.29'

S00°11'18"E 1325.26'

FIND
CORNER

UNPLATTED PORTION OF

POLYLINE^{1/4}

SECTION 3, T1N, R8E, BHM

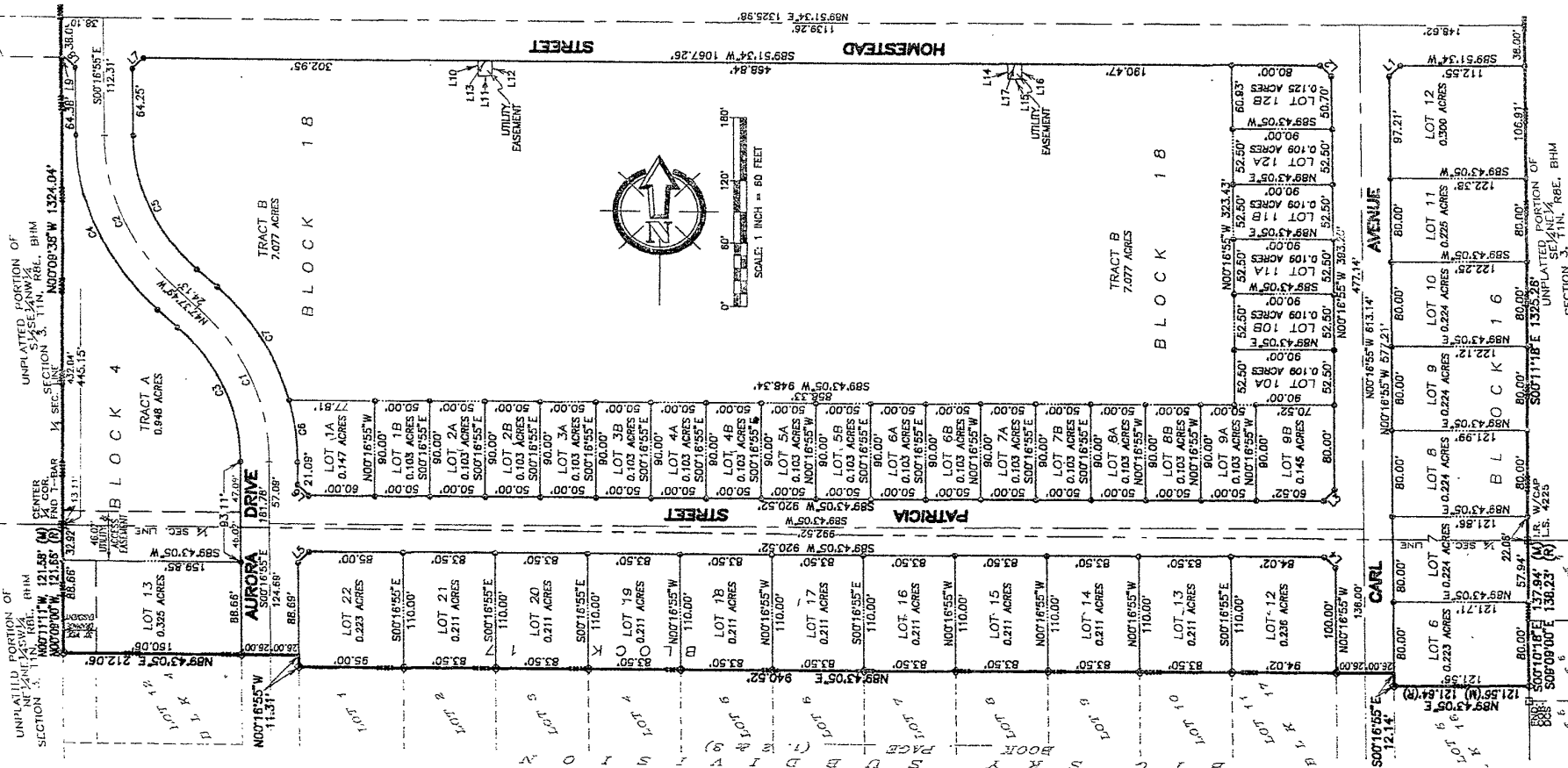
SCALE: 1 INCH = 100 FEET
CURVE TABLE

RECEIVED

03SV044

PLAT OF BIG SKY SUBDIVISION

LOT 13 & TRACT A, BLOCK 4; LOTS 6-12, BLOCK 16; LOTS 11A-12B & TRACT B, BLOCK 18; TRACT C AND DELTA STREETS IN THE NW1/4SE1/4 AND SW1/4SE1/4 OF SECTION 3, T1N, R10E, B1M, CITY OF RAPID CITY, PENNINGTON COUNTY, SOUTH DAKOTA



UNPLATTED PORTION OF SECTION 3, T1N, R10E, B1M

UNPLATTED PORTION OF SECTION 3, T1N, R10E, B1M

UNPLATTED PORTION OF SECTION 3, T1N, R10E, B1M