

03PL102

PLAT of LOT 4 of BLOCK 1, MENARD SUBDIVISION

(formerly a portion of the unplatted balance of the SE 1/4 of NW 1/4 and a portion

of the unplatted balance of the NE 1/4 of SW 1/4, all in Section 32)

Located in the SE 1/4 of NW 1/4 and NE 1/4 of SW 1/4 Section 32, T2N, R8E, BHM
Rapid City, Pennington County, South Dakota

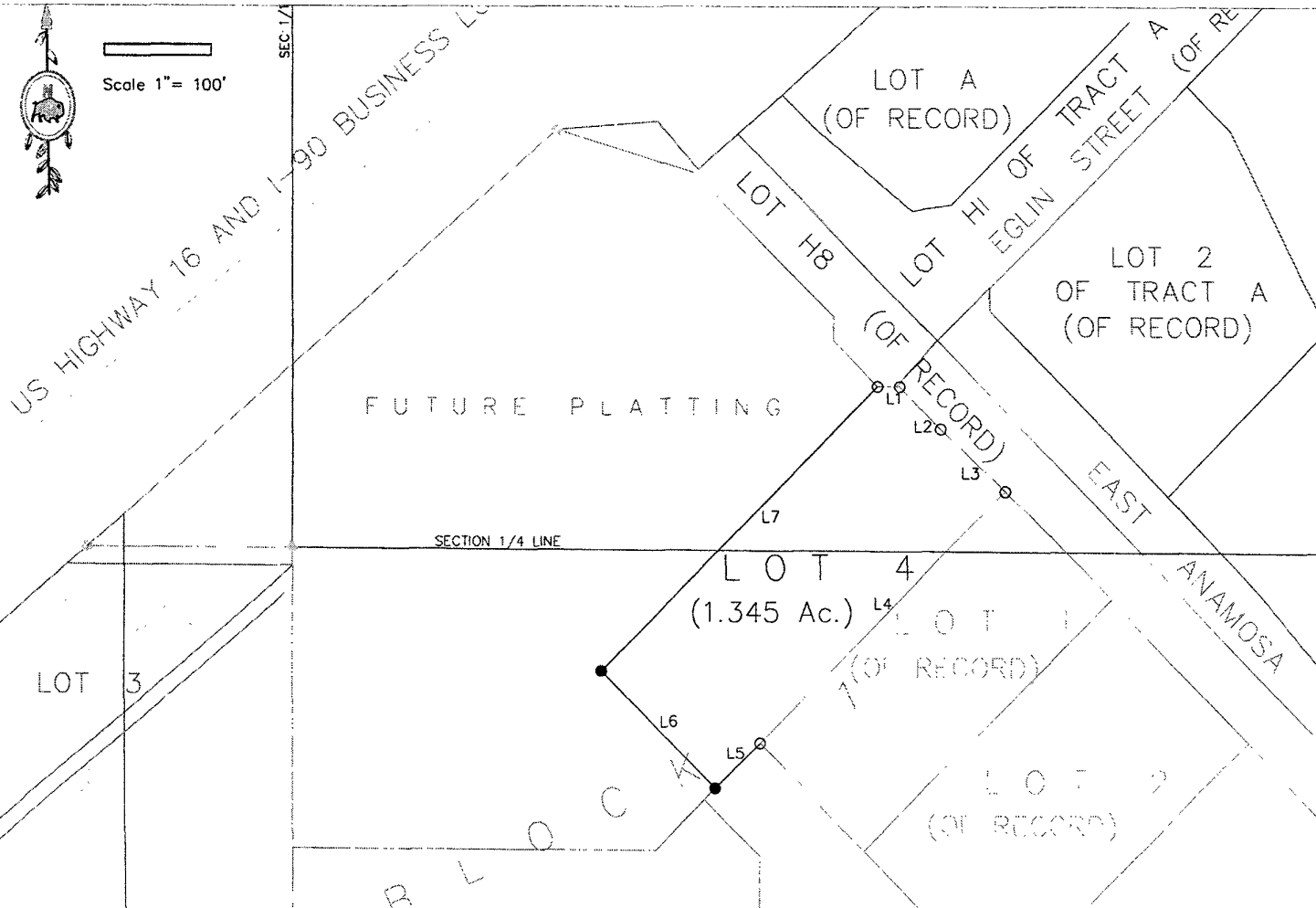
CLIENT:

Century Resources, Inc.
PO Box 9279
Rapid City, SD 57709
(605) 343-7117



Scale 1" = 100'

SEC. 1/4



Line	Bearing	Distance
L1	S89°50'22"E (M)	21.15' (M)
	S89°50'22"E (R)	21.15' (R)
L2	S44°56'18"E (M)	55.09' (M)
	S44°56'18"E (R)	55.09' (R)
L3	S46°54'30"E (M)	98.40' (M)
	N47°13'45"E (R)	98.40' (R)
L4	N45°21'03"E (M)	330.00' (M)
	N45°21'03"E (R)	330.00' (R)
L5	N45°21'03"E (M)	60.00' (M)
L6	N44°38'07"W (M)	151.42' (M)
L7	N45°21'03"E (M)	371.38' (M)

Basis of Bearings Line L7.
 22 SEP 2003, (C) Wasteline, Inc.
 ● Denotes set 5/8" rebar w/survey cap
 ○ Denotes found Survey Monument
 Utility and Minor Drainage Easements
 8' on the interior sides of all lot lines.
 Surveying: Randy Diebert.

Prepared by:
 WASTELINE INC./BLACK HILLS
 SURVEYING, INC
 PO Box 3471
 Rapid City, SD 57709-3471
 (605)348-9461
 SDLiberty@aol.com