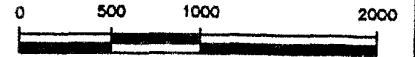


03SV039

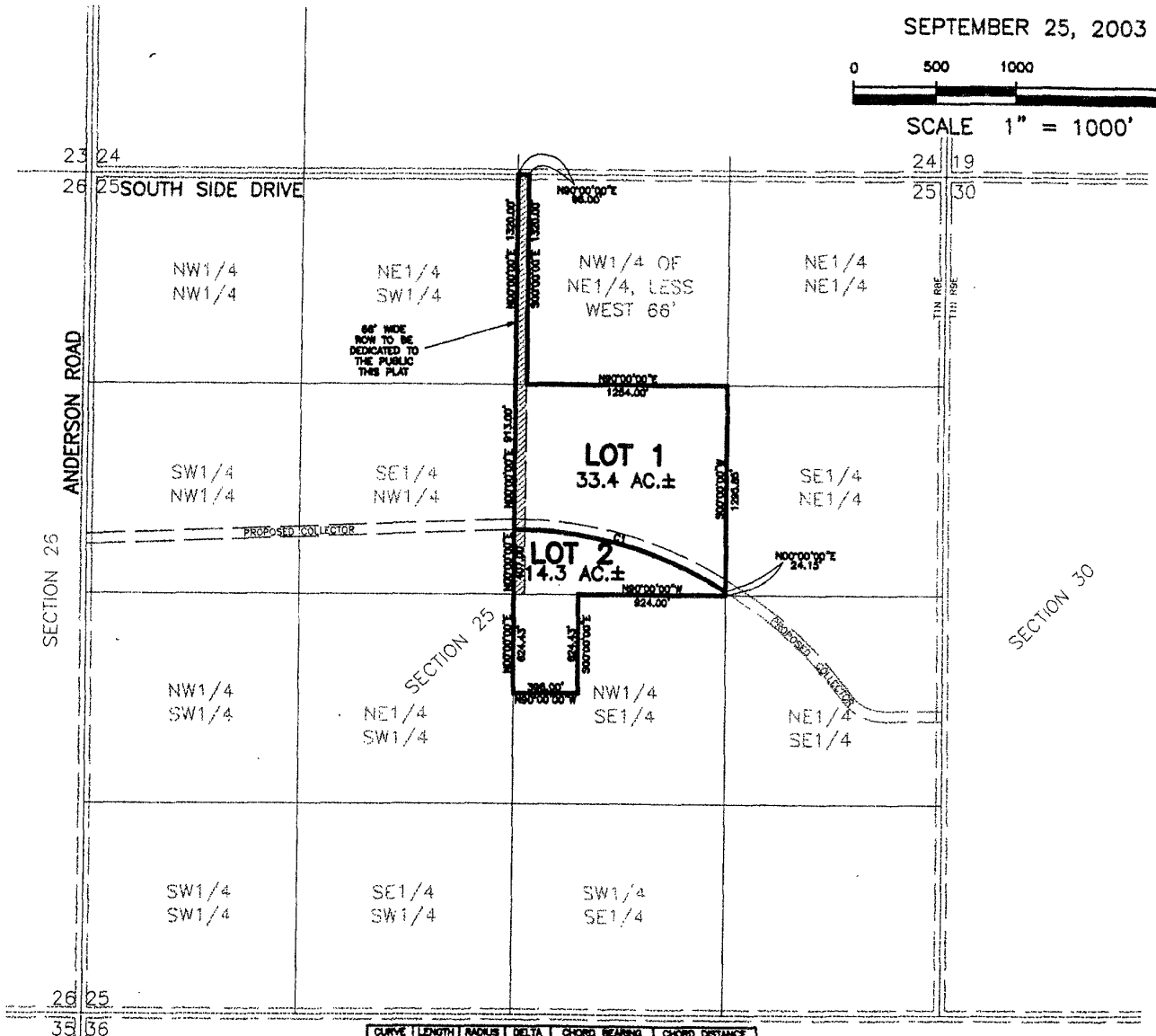
LAYOUT PLAT OF  
**LOT 1 AND 2,**  
**STEEN SUBDIVISION**  
 LOCATED IN E1/2,  
 SECTION 25, T1N, R8E, BHM  
 PENNINGTON COUNTY, SOUTH DAKOTA



SEPTEMBER 25, 2003



SCALE 1" = 1000'



CURVE	LENGTH	RADIUS	DELTA	CHORD BEARING	CHORD DISTANCE
C1	1382.82	2487.00	57°20'33"	N72°49'33"W	1574.46



**Renner & Sperlich Engineering Co.**

616 Sixth St. \* Rapid City, SD 57701 \* 605/342-1191  
 FAX: 605/342-1405 \* E-MAIL: RSEC@RAPIDNET.COM