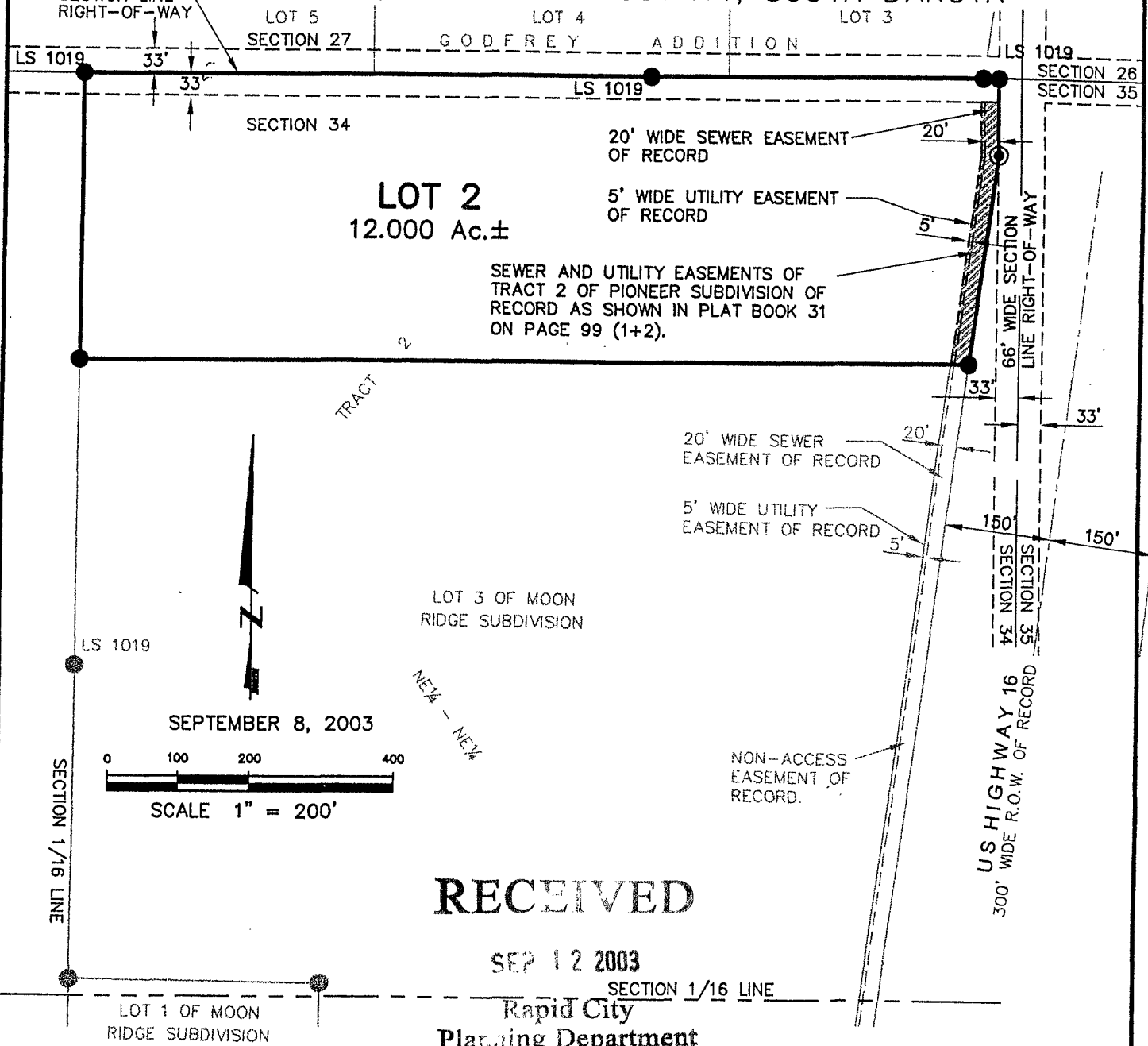


PLAT OF  
**LOT 2,**  
**MOON RIDGE SUBDIVISION,**

(formerly a portion of Tract 2 of Pioneer Subdivision)  
LOCATED IN THE NE1/4 OF THE NE1/4,  
SECTION 34, T1N, R7E, BHM,  
RAPID CITY, PENNINGTON COUNTY, SOUTH DAKOTA



20' WIDE SEWER EASEMENT OF RECORD  
 5' WIDE UTILITY EASEMENT OF RECORD  
 SEWER AND UTILITY EASEMENTS OF TRACT 2 OF PIONEER SUBDIVISION OF RECORD AS SHOWN IN PLAT BOOK 31 ON PAGE 99 (1+2).

SEPTEMBER 8, 2003  
 SCALE 1" = 200'

**RECEIVED**

SEP 12 2003

Rapid City  
 Planning Department



**Renner & Sperlich Engineering Co.**

616 Sixth St. \* Rapid City, SD 57701 \* 605/342-1191  
 FAX: 605/342-1405 \* E-MAIL: RSEC@RAPIDNET.COM

C:\Drawings\_DMM\1541\12 MOON.dwg 09/08/03 04:45:18 PM MDT