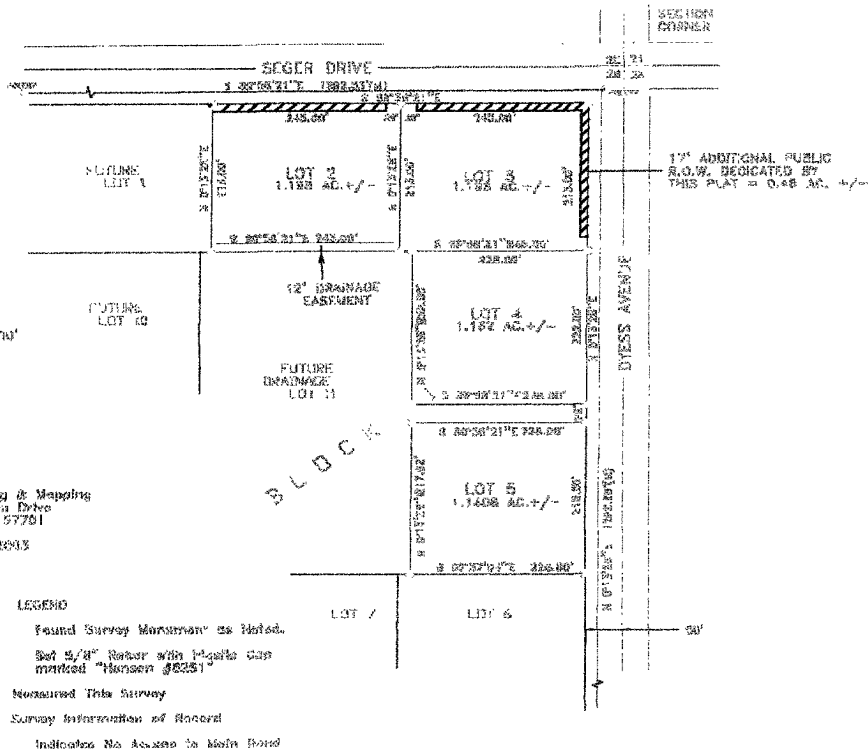


NORTHEAR SUBDIVISION
 PLAT OF LOTS 2, 3, 4 & 5 IN BLOCK 7
 LOCATED IN NE 1/4-NE 1/4 OF SECTION 29, T2N, R2E, B.M.M.
 RAPID CITY, PENNINGTON COUNTY, SOUTH DAKOTA



Prepared by:
 Hansen Surveying & Mapping
 9322 Hansen Mann Drive
 Rapid City, SD 57701
 605-338-4452
 September 30, 2013