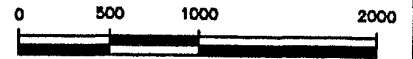


03PL098

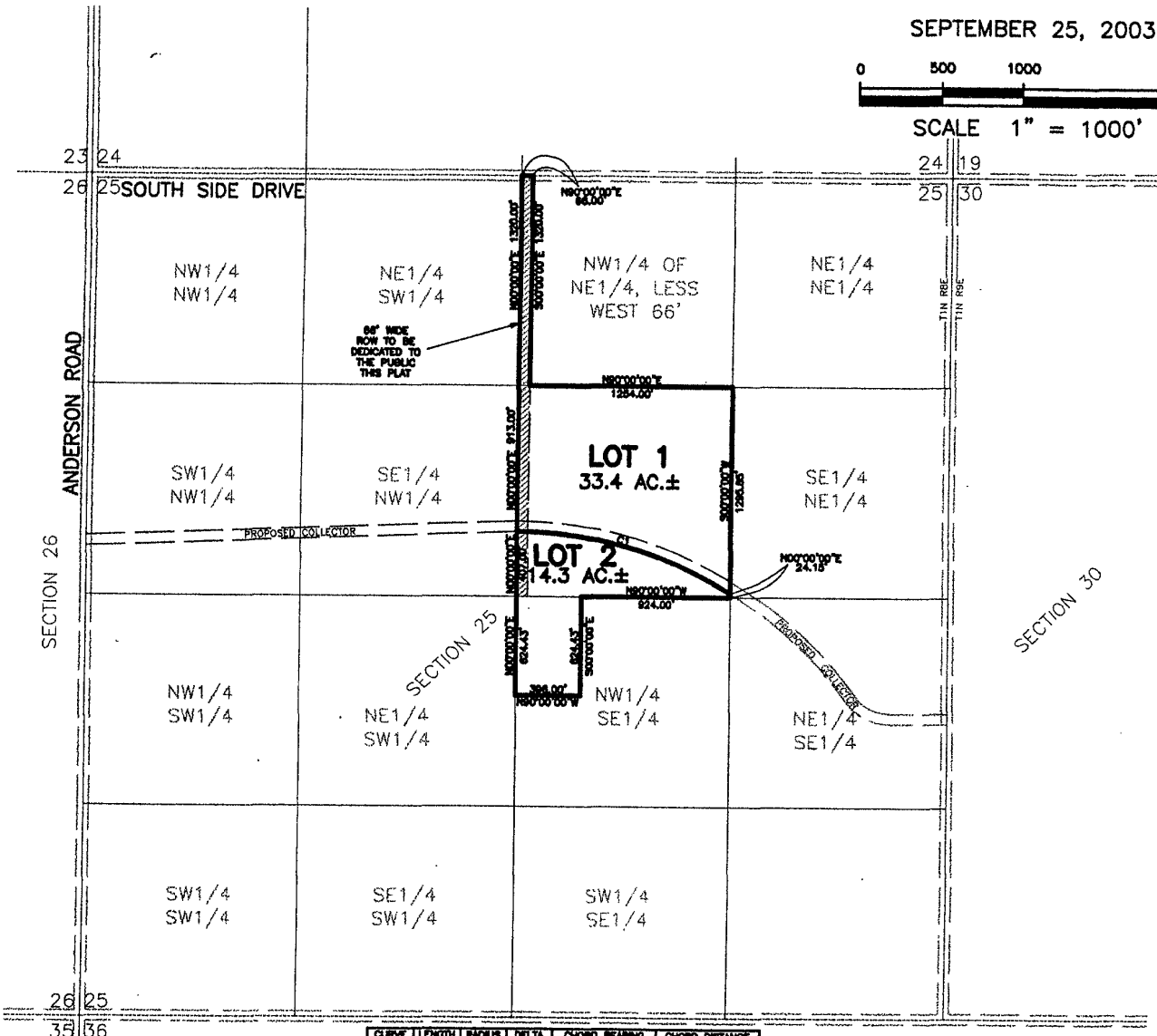
LAYOUT PLAT OF
LOT 1 AND 2,
STEEN SUBDIVISION
 LOCATED IN E1/2,
 SECTION 25, T1N, R8E, BHM
 PENNINGTON COUNTY, SOUTH DAKOTA



SEPTEMBER 25, 2003



SCALE 1" = 1000'



CURVE	LENGTH	RADIUS	DELTA	CHORD BEARING	CHORD DISTANCE
C1	1382.82	2467.00	27°20'53"	N73°49'53"W	1374.40



Renner & Sperlich Engineering Co.

616 Sixth St. * Rapid City, SD 57701 * 605/342-1191
 FAX: 605/342-1405 * E-MAIL: RSEC@RAPIDNET.COM