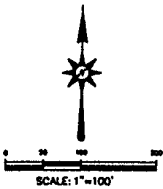
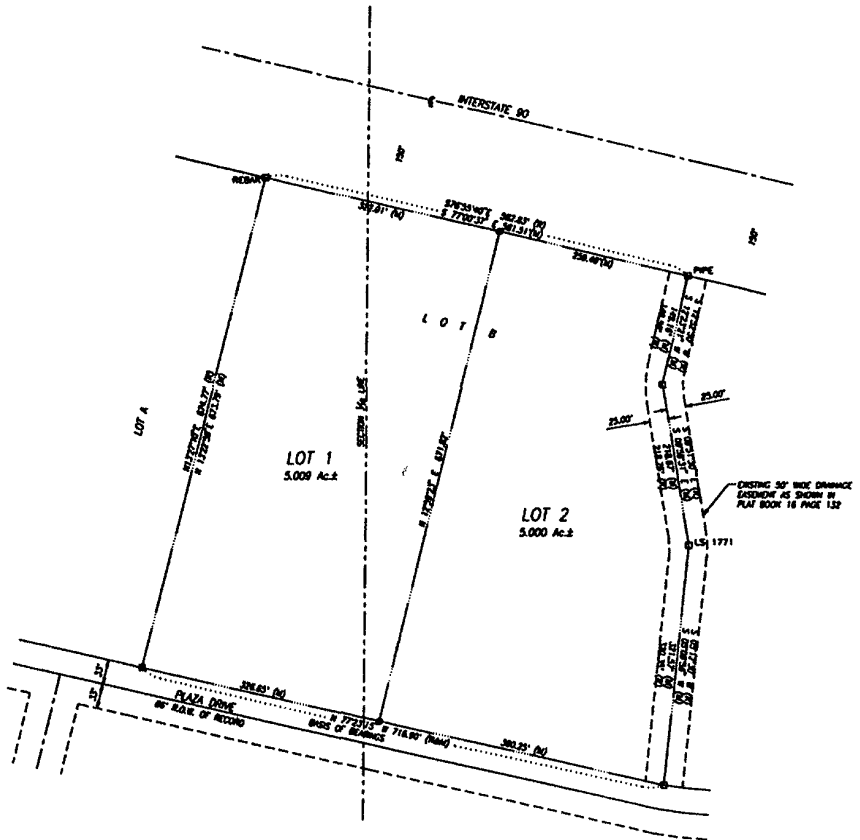


**PLAT OF LOTS 1 & 2 OF LOT B OF TRACT 12
OF S.G. INTERSTATE PLAZA SUBDIVISION
(FORMERLY LOT B OF TRACT 12 OF S.G. INTERSTATE PLAZA SUBDIVISION)
LOCATED IN THE S $\frac{1}{2}$ of the NE $\frac{1}{4}$
of SECTION 27, T1N, R7E, BHM
RAPID CITY, PENNINGTON COUNTY, SOUTH DAKOTA**

03PL086



LEGEND

- DENOTES SET 3/8" REBAR WITH SURVEY CAP MARKED "RLS 3977"
 - DENOTES FOUND SURVEY MONUMENT
- BASIS OF BEARING: AS SHOWN HEREON.

NOTES:

1. MINOR DRAINAGE AND UTILITY EASEMENTS ARE HEREBY ESTABLISHED 8' WIDE ON THE INTERIOR SIDE OF ALL LOT LINES AND RIGHT-OF-WAY. (EXCEPT WHERE MAJOR DRAINAGE EASEMENTS ARE LOCATED)
2. TOTAL PLATTED AREA: 10.009 ACRES
3. ANY MAJOR DRAINAGE EASEMENT SHOWN HEREON SHALL BE KEPT FREE OF ALL OBSTRUCTIONS INCLUDING BUT NOT LIMITED TO BUILDINGS, WALLS, FENCES, HEDGES, TREES, AND SHRUBS. THESE EASEMENTS GRANT TO ALL PUBLIC AUTHORITIES THE RIGHT TO CONSTRUCT, OPERATE, MAINTAIN, INSPECT AND REPAIR SUCH IMPROVEMENTS AND STRUCTURES AS IT DEEMS EXPEDIENT TO FACILITATE DRAINAGE FROM ANY SOURCE.



PREPARED BY:
ARLETH & ASSOCIATES

382 MAIN STREET
DEADWOOD, SD 57732
605-678-1637

JOB NO.
03-0045

DATE: 06/83
SCALE: 1" = 100'
DRAWN:

APPROVED: JHA
DWC:

PREPARED FOR:
GROUP ACQUIN INTERNATIONAL, INC.
620 DUNDAS CITY STREET SUITE 4
RAPID CITY, SOUTH DAKOTA 57701
(605) 346-6268