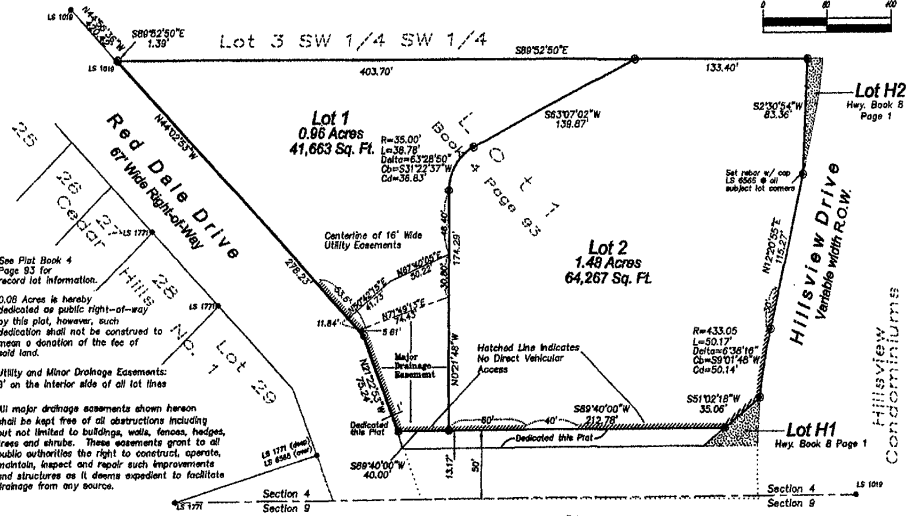
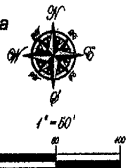


Plat of Lots 1 and 2 of Hillsview Subdivision #2 and dedicated right-of-way formerly all of Lot 1 of the SW1/4 SW1/4 of Section 4, T1N, R7E, BHM, Rapid City, Pennington County, South Dakota, less Lots H1 and H2 of said Lot 1 of the SW1/4 SW1/4, Section 4, T1N, R7E, BHM, located in the SW1/4 SW1/4 Section 4, T1N, R7E, BHM Rapid City, Pennington County, South Dakota

Prepared By:
Fish Land Surveying & Consulting Engineers, Inc.
P.O. Box 8164
Rapid City, SD 57709
(605) 348-1638
July 22, 2003
Project # 02-12-03

03PL081



See Plat Book 4
Page 93 for
record lot information.

0.08 Acres is hereby
dedicated as public right-of-way
by this plat, however, such
dedication shall not be construed to
mean a donation of the fee of
said land.

Utility and Minor Drainage Easements:
8' on the interior side of all lot lines

All major drainage easements shown hereon
shall be kept free of all obstructions including
but not limited to buildings, walls, fences, hedges,
trees and shrubs. These easements grant to all
public authorities the right to construct, operate,
maintain, inspect and repair such improvements
and structures as it deems expedient to facilitate
drainage from any source.

Lot H2
Hwy. Book 8
Page 1

Hillsview
Condominiums

Lot H1
Hwy. Book 8 Page 1

West St. Patrick Street