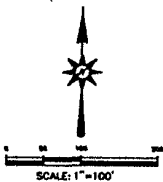
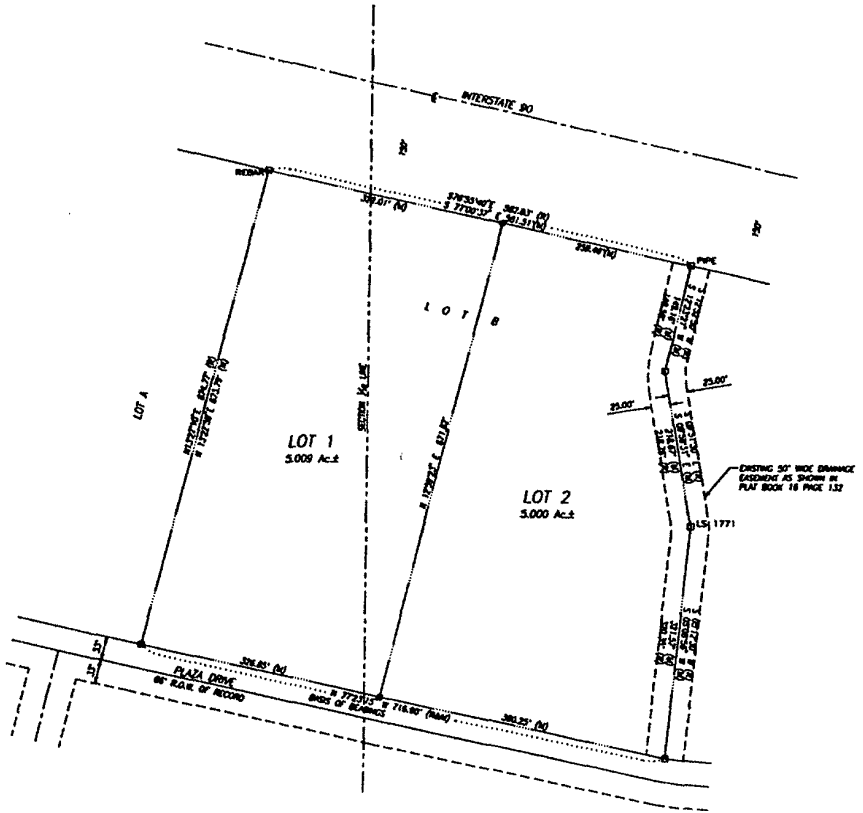


PLAT OF LOTS 1 & 2 OF LOT B OF TRACT 12  
 OF S.G. INTERSTATE PLAZA SUBDIVISION  
 (FORMERLY LOT B OF TRACT 12 OF S.G. INTERSTATE PLAZA SUBDIVISION)  
 LOCATED IN THE S $\frac{1}{2}$  of the NE $\frac{1}{4}$   
 of SECTION 27, T1N, R7E, BHM  
 RAPID CITY, PENNINGTON COUNTY, SOUTH DAKOTA

03SV032



**LEGEND.**

- DENOTES SET 5/8" REBAR WITH SURVEY CAP MARKED "RLS 3977"
  - DENOTES FOUND SURVEY MONUMENT
- BASIS OF BEARING: AS SHOWN HEREON.

**NOTES:**

1. MINOR DRAINAGE AND UTILITY EASEMENTS ARE HEREBY ESTABLISHED 8' WIDE ON THE INTERIOR SIDE OF ALL LOT LINES AND RIGHT-OF-WAY. (EXCEPT WHERE MAJOR DRAINAGE EASEMENTS ARE LOCATED)
2. TOTAL PLATTED AREA: 10.009 ACRES
3. ANY MAJOR DRAINAGE EASEMENT SHOWN HEREON SHALL BE KEPT FREE OF ALL OBSTRUCTIONS INCLUDING BUT NOT LIMITED TO BUILDINGS, WALLS, FENCES, HEDGES, TREES, AND SHRUBS. THESE EASEMENTS GRANT TO ALL PUBLIC AUTHORITIES THE RIGHT TO CONSTRUCT, OPERATE, MAINTAIN, INSPECT AND REPAIR SUCH IMPROVEMENTS AND STRUCTURES AS IT DEEMS EXPEDIENT TO FACILITATE DRAINAGE FROM ANY SOURCE.



PREPARED BY:  
**ARLETH &  
 ASSOCIATES**

382 MAIN STREET  
 DEADWOOD, SD 57732  
 805-678-1637

JOB NO.  
 03-0045

DATE: 08/03  
 SCALE: 1" = 100'  
 DRAWN:

APPROVED: JMA  
 DWG:

PREPARED FOR:  
 DUNN DESIGN INTERNATIONAL, INC.  
 800 SUNDAS CITY STREET SUITE 4  
 ALBANY, SD 57517  
 (605) 248-0528