

# PLAT OF BIG SKY SUBDIVISION

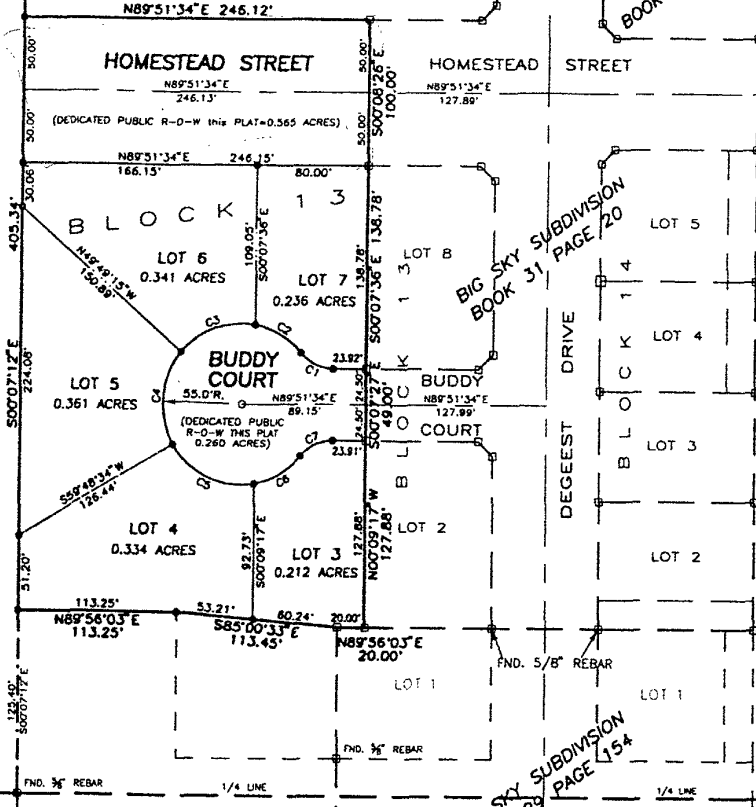
1 OF 2

LOTS 3-7, BLOCK 13; AND DEDICATED STREETS.  
 LOCATED IN THE SE 1/4 NW 1/4 OF SECTION 3, T1N, R8E, B.H.M.,  
 CITY OF RAPID CITY, PENNINGTON COUNTY, SOUTH DAKOTA

UNPLATTED  
 SE 1/4 NW 1/4

BIG SKY SUBDIVISION  
 BOOK 31 PAGE 30 (1 & 2)

UNPLATTED  
 E 1/2 SW 1/4 NW 1/4  
 (RADIO TOWER PROPERTY)

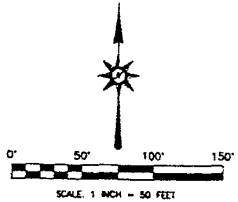


BIG SKY SUBDIVISION  
 BOOK 31 PAGE 20

BIG SKY SUBDIVISION  
 BOOK 29 PAGE 154

RECEIVED  
 JUL 24 2003  
 Rapid City  
 Planning Department

RECEIVED  
 MAY 22 2003  
 Rapid City  
 Planning Department



**NOTES:**

- MINOR DRAINAGE AND UTILITY EASEMENTS ARE HEREBY ESTABLISHED 8' WIDE ON THE INTERIOR SIDE OF ALL LOT LINES AND RIGHT-OF-WAY.
- TOTAL PLATTED AREA: 2.309 ACRES;  
 TOTAL LOTS: 1,484 ACRES;  
 DEDICATED PUBLIC RIGHT-OF-WAY: 0.825 ACRES.
- ANY MAJOR DRAINAGE EASEMENT SHOWN HEREON SHALL BE KEPT FREE OF ALL OBSTRUCTIONS INCLUDING BUT NOT LIMITED TO BUILDINGS, WALLS, FENCES, HEDGES, TREES, AND SHRUBS. THESE EASEMENTS GRANT TO ALL PUBLIC AUTHORITIES THE RIGHT TO CONSTRUCT, OPERATE, MAINTAIN, INSPECT AND REPAIR SUCH IMPROVEMENTS AND STRUCTURES AS IT DEEMS EXPEDIENT TO FACILITATE DRAINAGE FROM ANY SOURCE.

**LEGEND**

- DENOTES SET 5/8" REBAR WITH SURVEY CAP MARKED "RLS 3677"
  - DENOTES FOUND SURVEY MONUMENT
- BASIS OF BEARING: PER PREVIOUSLY RECORDED PLAT(S).

**CURVE TABLE**

NUMBER	RADIUS	DEFLECTION ANGLE	ARC LENGTH	TANGENT	CHORD BEARING	CHORD LENGTH
C1	30.00	50°07'13"	26.24	14.03	S65°04'50"E	25.41
C2	55.00	40°32'01"	38.91	20.31	S60°17'14"E	38.10
C3	55.00	59°18'01"	56.89	31.29	S69°48'45"W	54.39
C4	55.00	70°22'10"	67.55	38.78	S04°59'39"W	63.38
C5	55.00	69°31'19"	66.74	38.17	S64°57'05"E	62.72
C6	55.00	40°32'55"	38.92	20.32	S60°00'48"W	38.12
C7	30.00	50°07'13"	26.24	14.03	N84°47'37"E	23.41

<p>PREPARED BY:  <b>ARLETH &amp; ASSOCIATES</b></p>	<p>382 MAIN STREET                  DEADWOOD, SD 57732                  605-576-1637</p>	<p>JOB NO. _____</p>	<p>DATE: MAY 18, 2003</p>	<p>APPROVED: JMA</p>	<p>PREPARED FOR:                  DREAM DESIGN INTERNATIONAL, INC.                  628 HANCOCK CITY STREET, SUITE 4                  RAPID CITY, SOUTH DAKOTA 57901                  (605) 348-0438</p>
			<p>SCALE: 1" = 50'</p>		