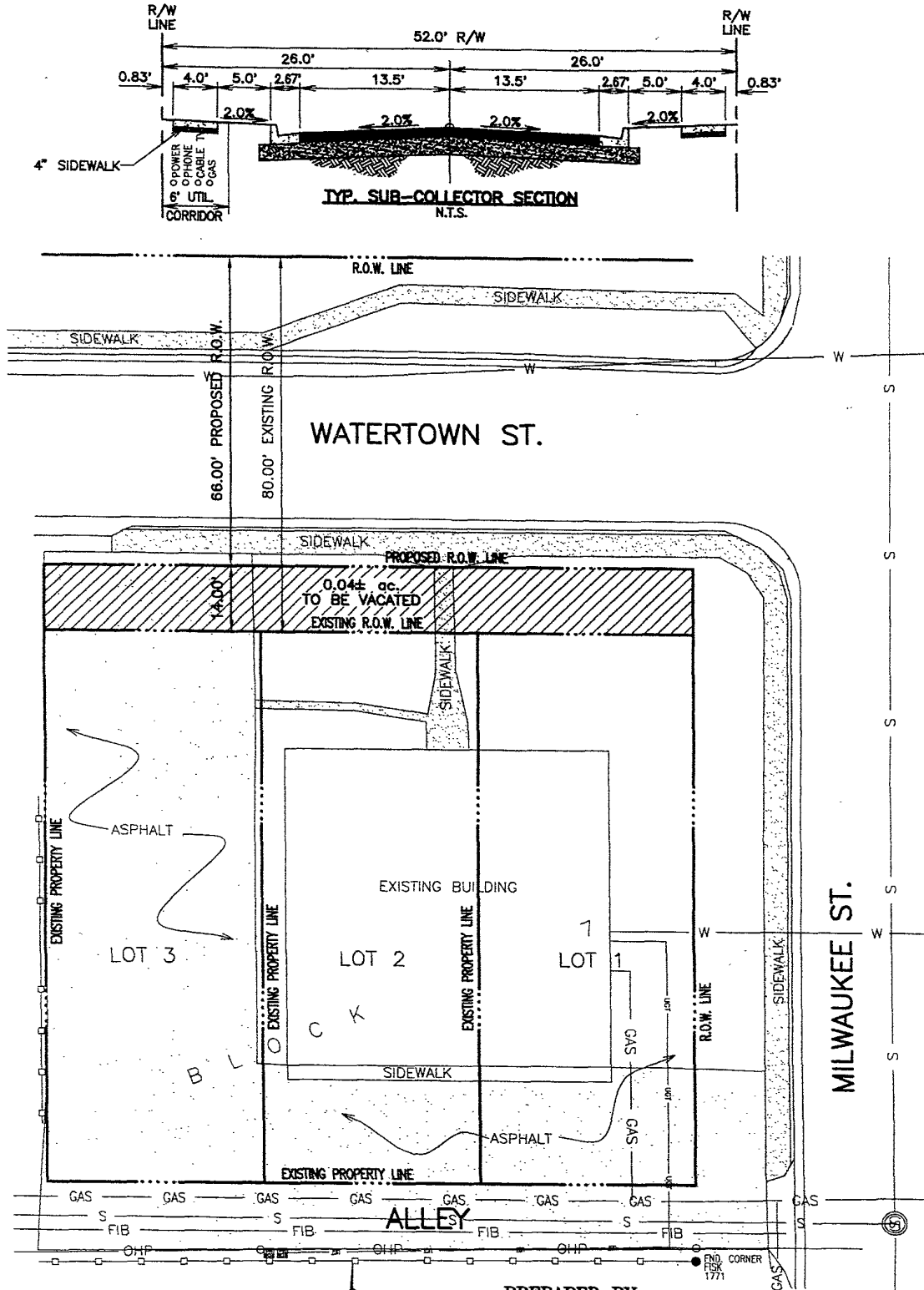


EXHIBIT A

RIGHT OF WAY TO BE VACATED

LOTS 1-3, BLOCK 7
 SCHNASSE SUBDIVISION
 SECTION 31, T2N, R8E, BHM
 RAPID CITY, PENNINGTON COUNTY, SOUTH DAKOTA.



C:\DWG\PROJECTS\Milwaukee\SW\TOPD.dwg, layout1, 7/22/2003 1:39:39 PM, 1:1

PREPARED BY:

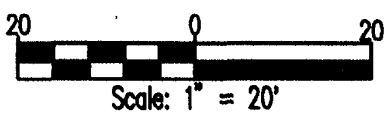
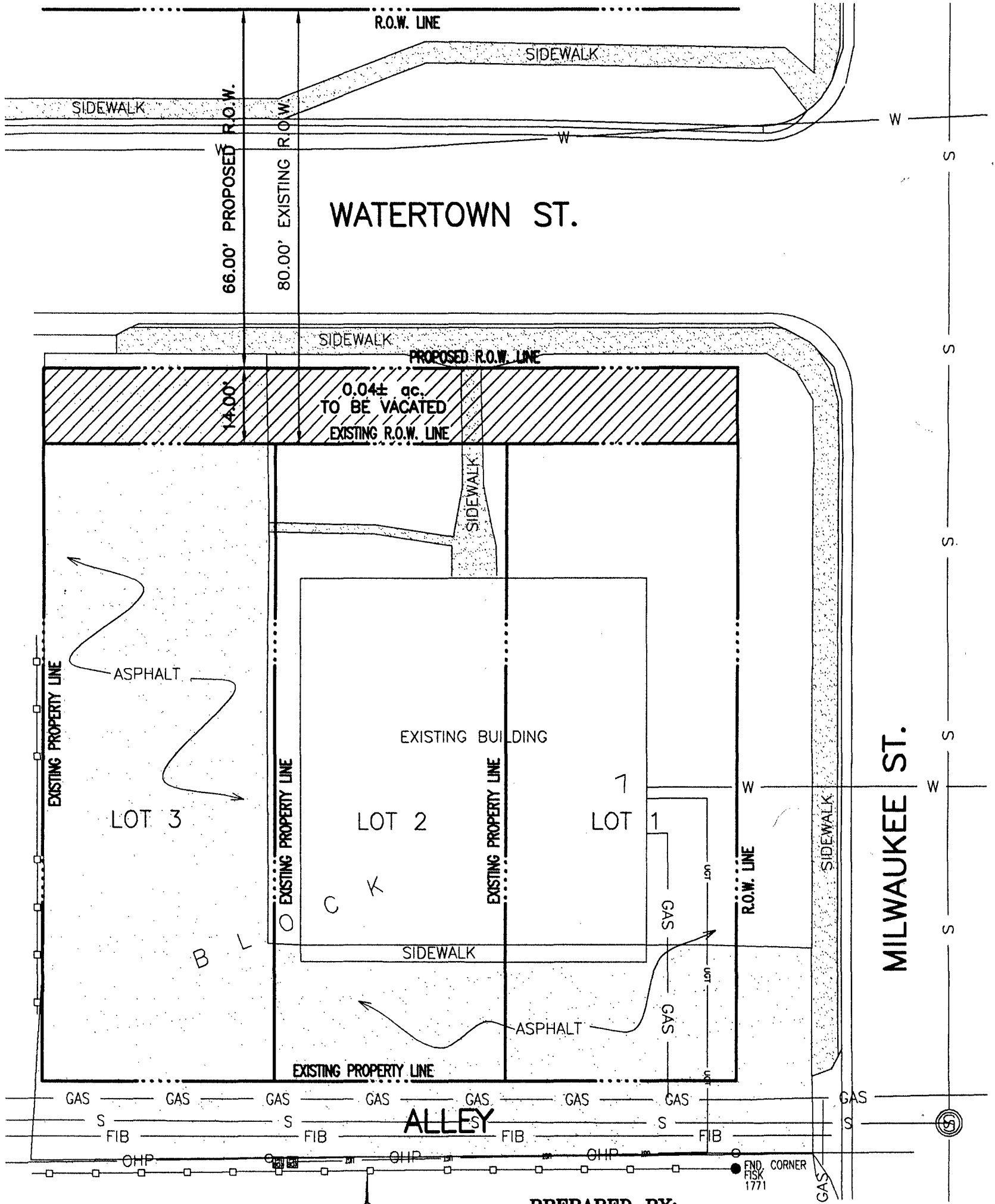
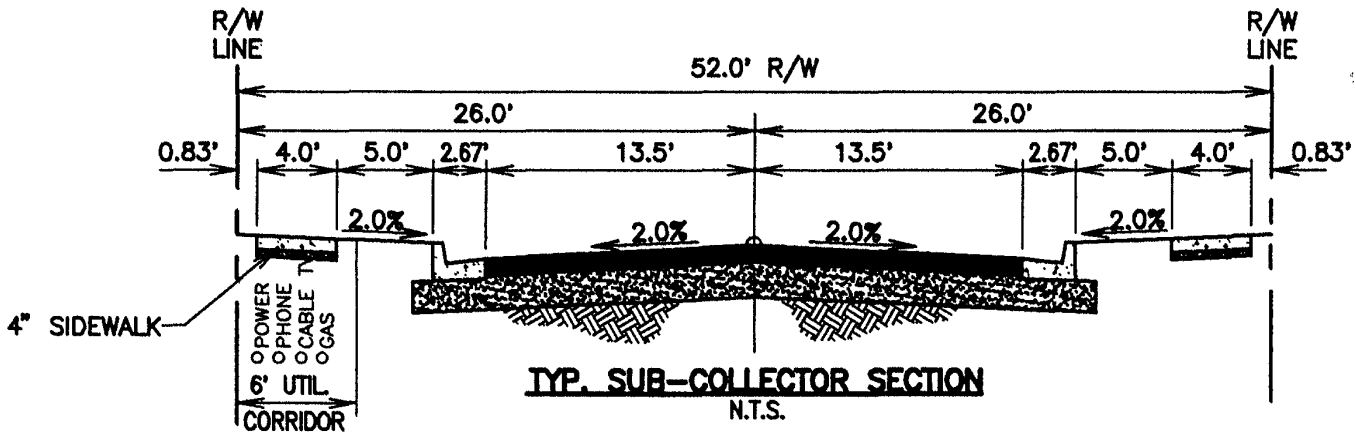


D.D.I.
DREAM DESIGN INTERNATIONAL, INC.
 PROFESSIONAL CIVIL & STRUCTURAL ENGINEERING CONSULTANTS
 528 KANSAS CITY ST., SUITE 4, RAPID CITY, SD 57701
 PH. 605-348-0638 FAX 605-348-0645 EMAIL: engineers@dreamdesigninc.com

EXHIBIT A

RIGHT OF WAY TO BE VACATED

LOTS 1-3, BLOCK 7
 SCHNASSE SUBDIVISION
 SECTION 31, T2N, R8E, BHM
 RAPID CITY, PENNINGTON COUNTY, SOUTH DAKOTA.



PREPARED BY:



D.D.I.
DREAM DESIGN INTERNATIONAL, INC.
 PROFESSIONAL CIVIL & STRUCTURAL ENGINEERING CONSULTANTS
 528 KANSAS CITY ST., SUITE 4, RAPID CITY, SD 57701
 PH. 605-348-0538 FAX. 605-348-0545 EMAIL: engineers@dreamdesigninc.com