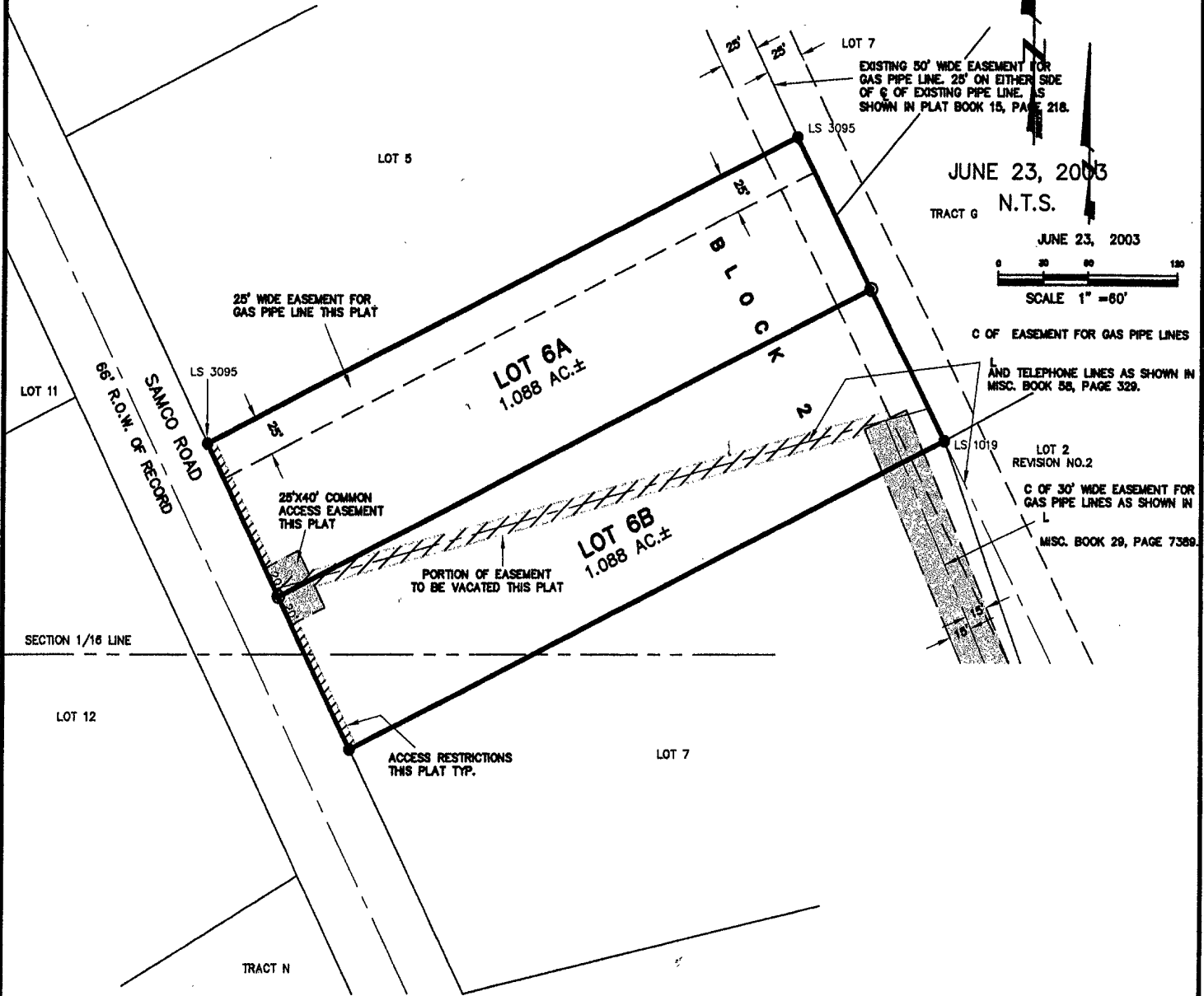


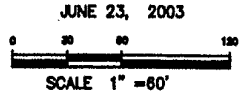
PLAT OF LOTS 6A & 6B OF BLOCK 2, CENTURY PARK SUBDIVISION

(formerly Lot 6 of Block 2 of Century Park Subdivision)
LOCATED IN E1/2 OF SW1/4,
SECTION 27, T2N, R7E, BHM
RAPID CITY, PENNINGTON COUNTY, SOUTH DAKOTA



JUNE 23, 2003

TRACT G N.T.S.



C OF EASEMENT FOR GAS PIPE LINES

AND TELEPHONE LINES AS SHOWN IN
MISC. BOOK 58, PAGE 329.

LOT 2
REVISION NO.2

C OF 30' WIDE EASEMENT FOR
GAS PIPE LINES AS SHOWN IN
MISC. BOOK 29, PAGE 7389.



Renner & Sperlich Engineering Co.

616 Sixth St. * Rapid City, SD 57701 * 605/342-1191
FAX: 605/342-1405 * E-MAIL: RSEC@RAPIDNET.COM