

PLAT OF BIG SKY SUBDIVISION
 INCLUDING LOTS 10-12, BLOCK 4; LOTS 1-11,
 BLOCK 17; LOTS 12-22, BLOCK 15; LOTS 3-5,
 BLOCK 16 OF BIG SKY SUBDIVISION AND
 DEDICATED ELMER STREET, AURORA DRIVE,
 CARL AVENUE AND MAJOR DRAINAGE EASEMENT
 LOCATED IN THE N1/4SE1/4 OF SECTION 3,
 T1N, R8E, B.H.M. CITY OF RAPID CITY,
 PENNINGTON COUNTY, SOUTH DAKOTA

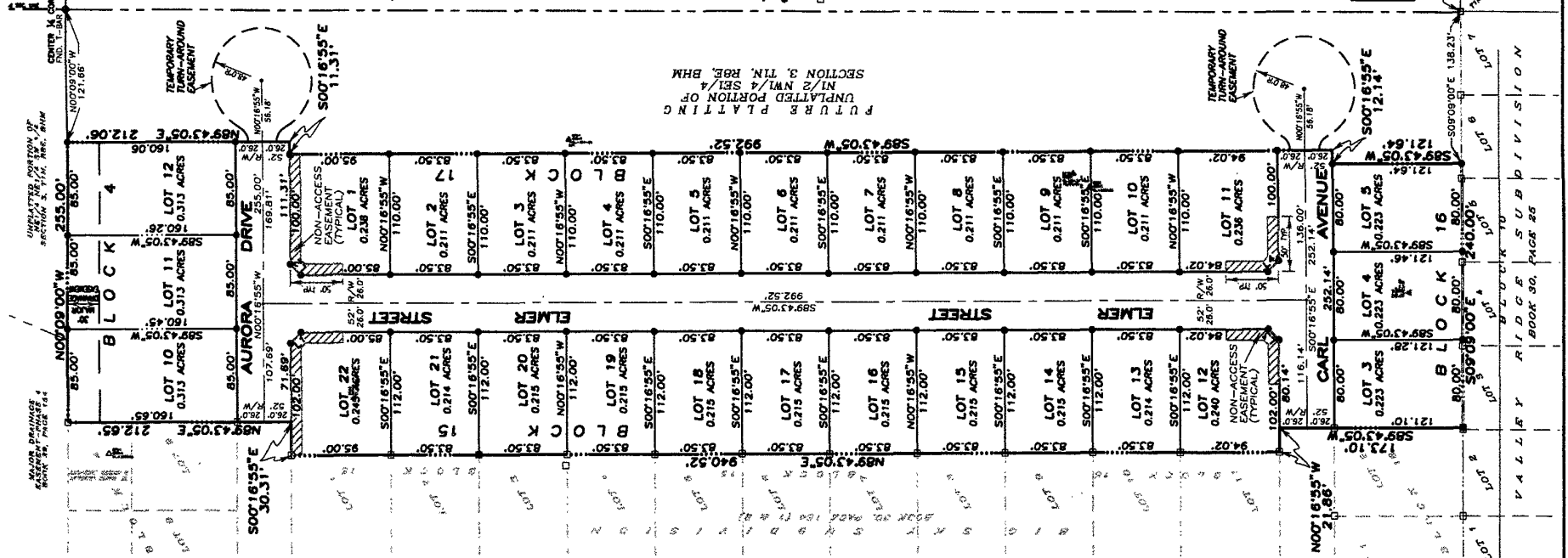
03PL068

NOTES:

- MINOR DRAINAGE AND UTILITY EASEMENTS ARE HEREBY ESTABLISHED 8' WIDE ON THE INTERIOR SIDE OF ALL LOT LINES AND RIGHT-OF-WAY, (EXCEPT WHERE MAJOR DRAINAGE EASEMENTS ARE LOCATED)
- TOTAL PLATTED AREA: 8.129 ACRES; LOTS: 6.396 ACRES; DEDICATED PUBLIC RIGHT-OF-WAY: 1.733 ACRES.
- ANY MAJOR DRAINAGE EASEMENT SHOWN HEREON SHALL BE KEPT FREE OF ALL OBSTRUCTIONS INCLUDING BUT NOT LIMITED TO BUILDINGS, WALLS, FENCES, HEDGES, TREES, AND SHRUBS. THESE EASEMENTS GRANT TO ALL PUBLIC AUTHORITIES THE RIGHT TO CONSTRUCT SUCH IMPROVEMENTS AND STRUCTURES AS IT DEEMS EXPEDIENT TO FACILITATE DRAINAGE FROM ANY SOURCE.
- NON-ACCESS EASEMENTS ARE HEREBY ESTABLISHED ALONG THE FIRST FIFTY FEET OF CORNER LOTS OR AS INDICATED HEREON.

LEGEND:

- DENOTES SET 5/8" REBAR WITH SURVEY CAP MARKED "RLS 3977"
 - DENOTES FOUND SURVEY MONUMENT
- BASIS OF BEARING: PER PREVIOUSLY RECORDED PLAT(S)



SHORT COURSE TABLE

NUMBER	DIRECTION	DISTANCE
1	S44°13'03" W	14.14'
2	S43°16'33" E	14.14'
3	S44°43'05" W	14.14'