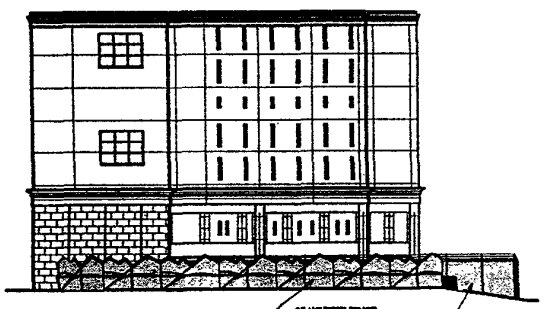
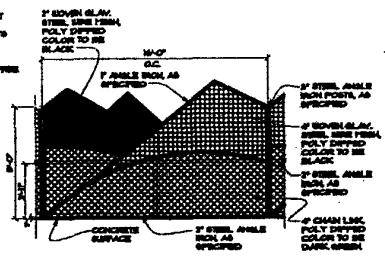


**1 SOUTH ELEVATION**  
SCALE 1/16" = 1'-0"

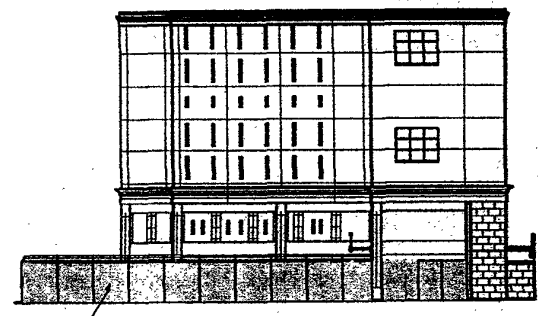


**2 WEST ELEVATION**  
SCALE 1/16" = 1'-0"

GENERAL NOTE:  
1. CONTRACTOR TO VERIFY EXISTING DIMENSIONS FOR LANDSCAPE ARCHITECT'S REVIEW.  
2. ALL UNITS ARE TO BE FINISHED SMOOTH AND FREE OF BLEMES.

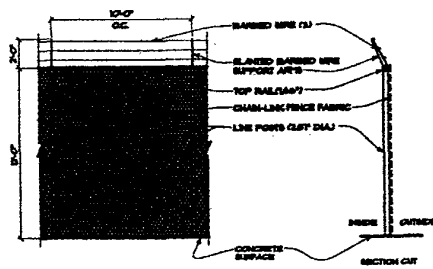


**3 OIL HUETTE FENCE, 16' PANEL**  
SCALE 1/4" = 1'-0"



**3 EAST ELEVATION**  
SCALE 1/16" = 1'-0"

GENERAL NOTE:  
1. CORNER & END POSTS ARE 4" DIA.



**SECURITY FENCE, 12' PANEL**  
SCALE 1/4" = 1'-0"

**FENNINGTON COUNTY COURTHOUSE COMPLEX**  
 JAIL ANNEX, RAPID CITY, SOUTH DAKOTA  
 ARCHITECTURE • INTERIOR • PLANNING  
 LIND-LEWIS ASSOCIATES LTD.  
 1501 SHERBORN LANE, RAPID CITY, SOUTH DAKOTA 57701-3453  
 605-342-3400 FAX  
 DATE: 03/27/03  
 DRAWING NO.: 03FV004  
 SHEET NO.: 1 OF 1  
 SCALE: 1/16" = 1'-0"

