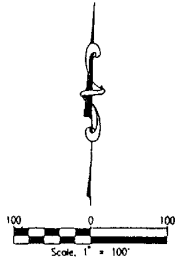
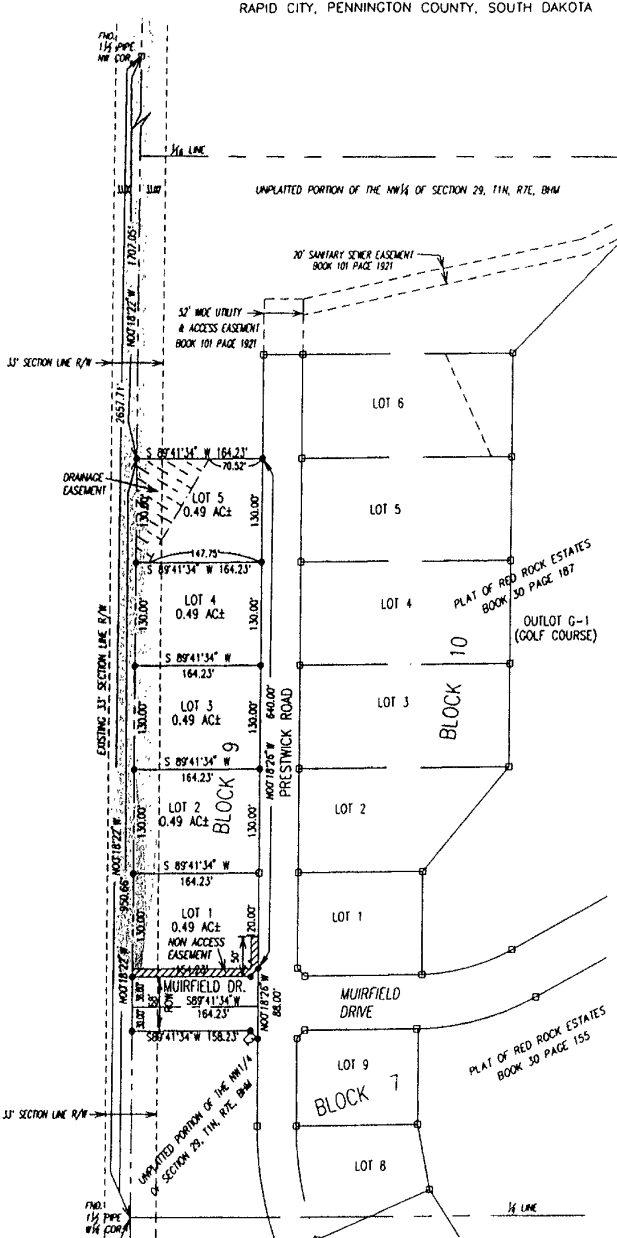


# PLAT OF RED ROCK ESTATES

INCLUDING LOTS 1 THRU 5, BLOCK 9  
AND DEDICATED STREET

THE UNPLATTED PORTION OF SW 1/4 & THE UNPLATTED PORTION OF NW 1/4  
SECTION 29, T1N, R7E, BHM  
RAPID CITY, PENNINGTON COUNTY, SOUTH DAKOTA



NUMBER	DIRECTION	DISTANCE
L1	N 44°41'34" E	14.14'
L2	N 45°18'26" W	14.14'

- LEGEND**
- DENOTES SET 5/8" REBAR WITH SURVEY CAP MARKED "RLS 3977"
  - DENOTES FOUND SURVEY MONUMENT
  - BASIS OF BEARING: PER PREVIOUSLY RECORDED PLAT(S)
  - ▨▨▨▨ = DEDICATED EASEMENT
  - ▨▨▨▨ = NON-ACCESS EASEMENT