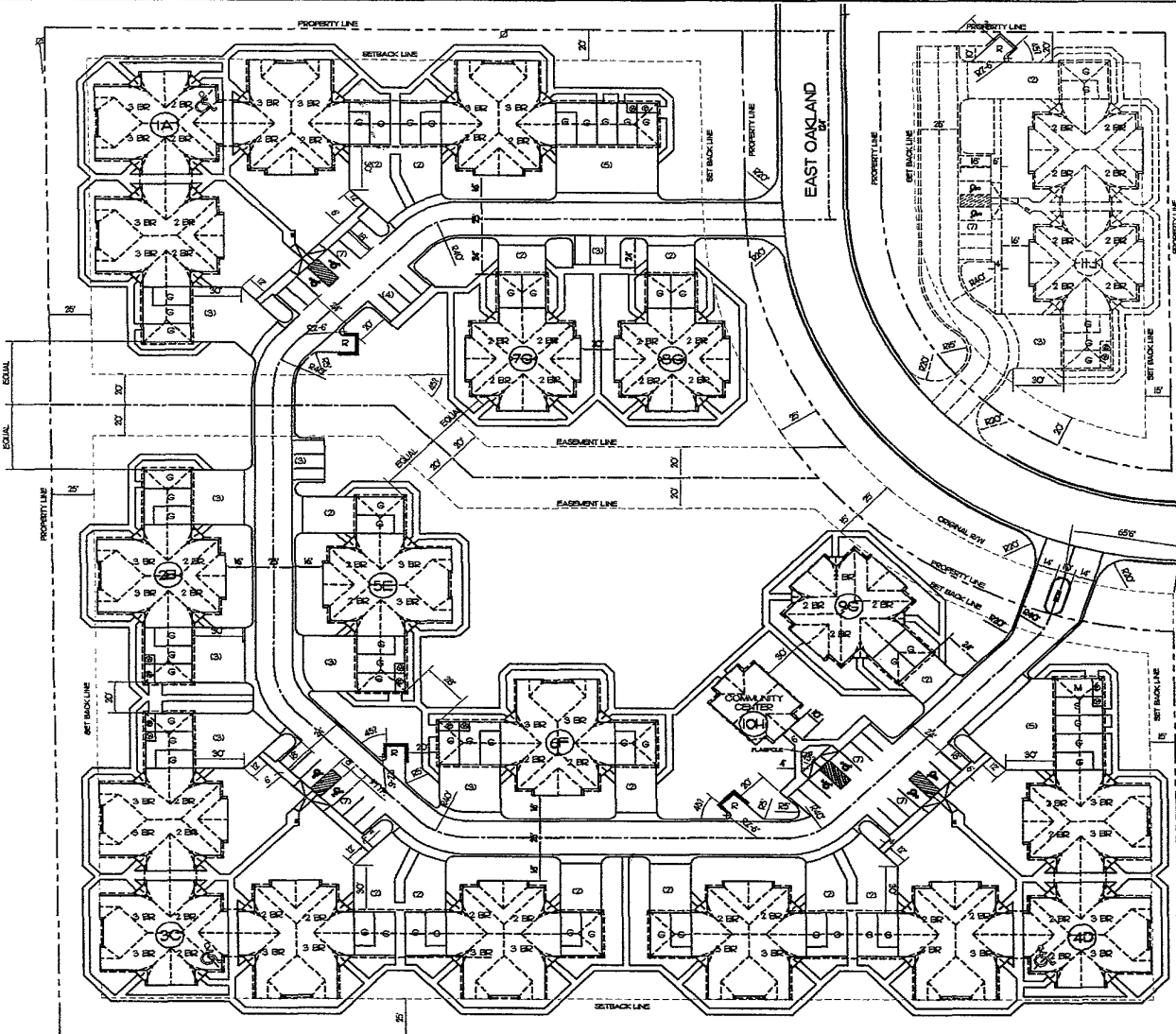


3SE004



**PHASE I SITE PROJECT DATA:**  
**PHASE II - 0.97% ACRES**  
**MAXIMUM BUILDING LENGTH - 17'-6"**  
**LOT AREA/LEASAGE:**  
 TOTAL LOT AREA = 303,141 SF. (6.9104 ACRES)  
**IMPERVIOUS SURFACES:**  
 BUILDING AREA = 67,915  
 PAVING AREA = 63,256  
 SIDEWALK AREA = 23,604  
 TOTAL IMPERVIOUS SURFACE = 174,637 SF.  
**LANDSCAPE AREA = 116,504 SF.**  
**LOT DENSITY:**  
 72 DWELLING UNITS + 888 OUTSIDE  
 42 2 BR.  
 30 3 BR.

**PARKING PROVIDED:**

ATTACHED GARAGE SPACES	-42
SEM-ATTACHED GARAGE SPACES	-10
TOTAL GARAGE SPACES	-52
ASSIGNED SURFACE SPACES	-62
UNASSIGNED SURFACE SPACES	
TOTAL SURFACE SPACES	-38 (6 ACCESSIBLE)
TOTAL PARKING SPACES PROVIDED	-102 (6 ACCESSIBLE)

**READY ARCHITECTURAL ASSOCIATES, INC.**  
 11605 WYMAN BLVD.  
 MINNEAPOLIS, MN 55438  
 (952) 979-9231 FAX: (952) 932-3914

1. HUBERT CURRY HAS THE PLANS, SPECIFICATIONS AND CONTRACTS PREPARED BY HIM OR HIS EMPLOYEES AND THAT HE HAS A DULY SUPPORTED INTEREST UNDER THE LAWS OF THE STATE OF MINNESOTA.

ROBERT B. BERRY, M.A.S., M.P.R., C.E.  
 DATE: \_\_\_\_\_ REG. NO. 621

DEVELOPER

**G**

**GANDOLF GROUP, L.L.C.**  
 6485 Weyzata Blvd., Suite 320  
 Minneapolis, MN 55426

PROJECT NAME  
**SOUTH CREEK VILLAGE**  
 RAPID CITY, S.D.

PROJECT NO.	0002	
DATE	5/20/03	
DRAWN BY	KEADRAMPT	
CHECKED BY	LEADAMPT	
PLotted DATE	05/23/03	
REVISIONS	0	
REV #	DATE	BY
△		
△		
△		
△		

COPYRIGHT 2003, EAST READY ARCHITECTURAL ASSOCIATES, INC.

SCALE  
 1" = 30'

SHEET TITLE  
**SITE PLAN**

SHEET NUMBER  
 A.11

- GRAPHICS KEY:**
- G = GARAGE
  - M = PROJECT MAINTENANCE GARAGE
  - S = PROJECT STORAGE GARAGE
  - T = REFUSE CONTAINER AREA
  - ⊕ = ELECTRIC METER PACK
  - ⊙ = WATER METER
  - ♿ = ACCESSIBLE DWELLING UNIT