

EXHIBIT A

BOUNDARY OF LOTS 7 THRU 10, BLOCK 14
 IN THE UNPLATTED PORTION OF W $\frac{1}{2}$ NW $\frac{1}{4}$ NE $\frac{1}{4}$
 SECTION 29, T1N, R7E, BHM
 RAPID CITY, PENNINGTON COUNTY, SOUTH DAKOTA
 02RZ065

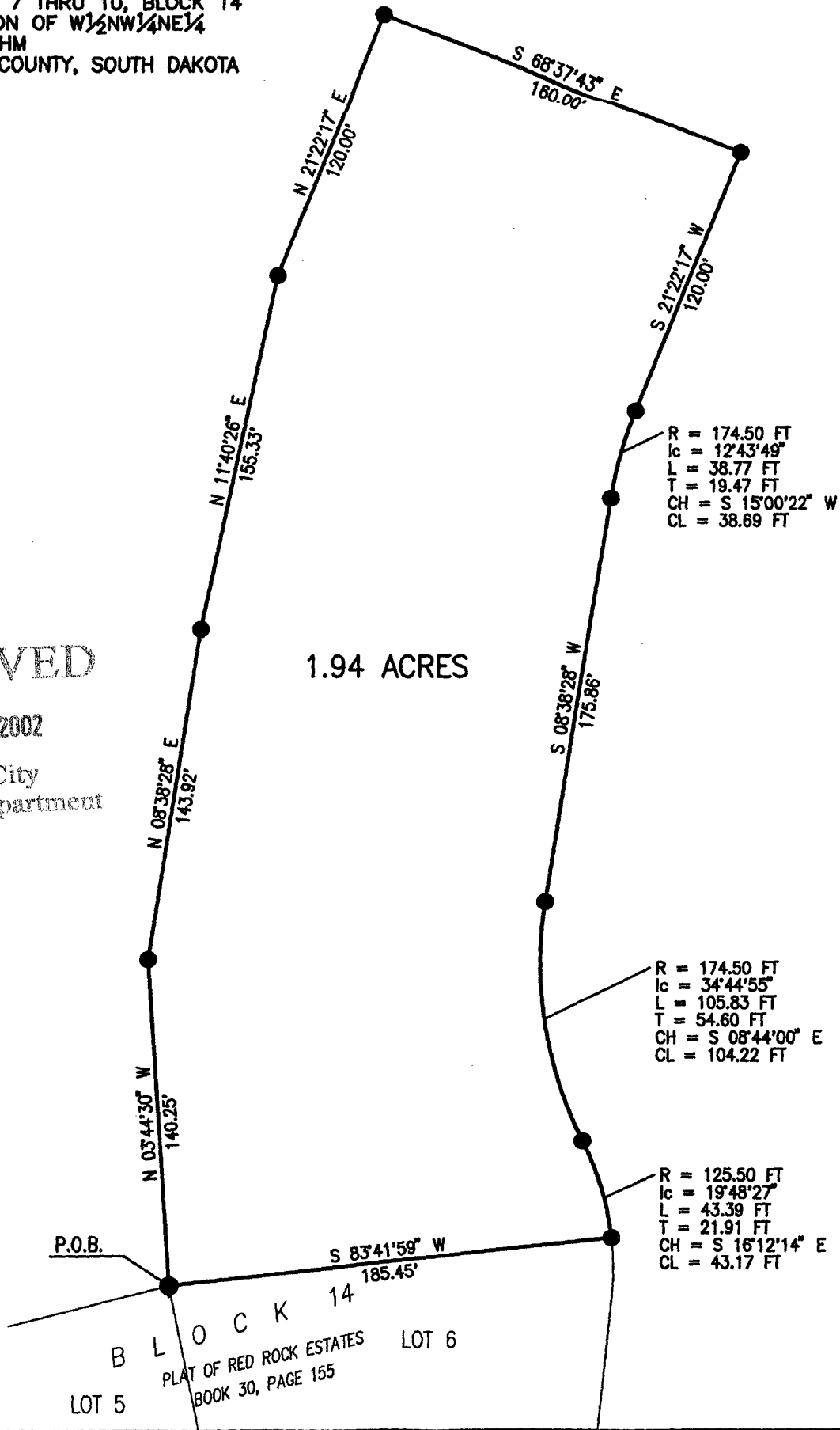


RECEIVED

OCT 29 2002

Rapid City
 Planning Department

1.94 ACRES



P.O.B.

LOT 5 BLOCK 14 LOT 6
 PLAT OF RED ROCK ESTATES
 BOOK 30, PAGE 155