

EXHIBIT A UTILITY AND ACCESS EASEMENTS

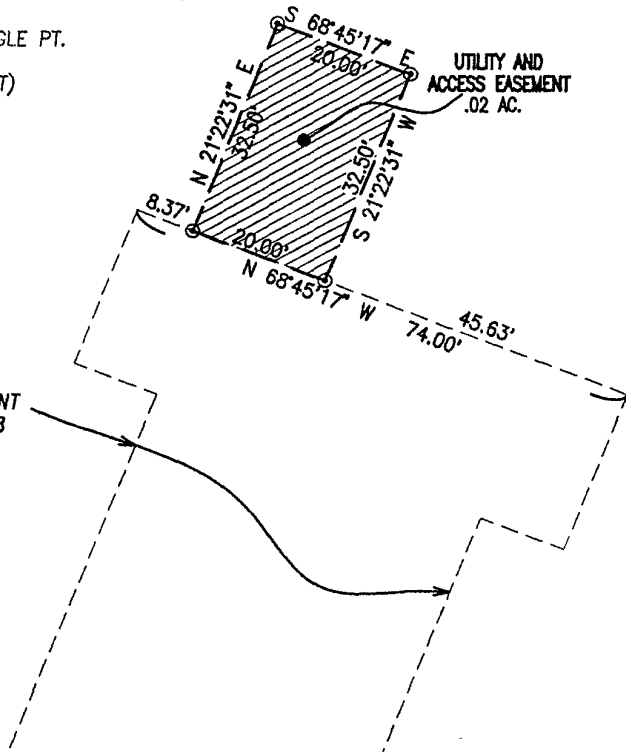
SECTION 29, T1N, R8E, BHM
RAPID CITY, PENNINGTON COUNTY, SOUTH DAKOTA.

02PL114



LEGEND

⊙ DENOTES ANGLE PT.
IN EASEMENT
(NOTHING SET)



UTILITY AND
ACCESS EASEMENT
.02 AC.

UTILITY AND ACCESS EASEMENT
BOOK 101, PAGE 3136-3138

RECEIVED
OCT 25 2002
Rapid City
Planning Department

K:\DALE--RD\PLAT\BIRKDALE-PLAT.dwg, 10/22/2002 5:07:00 PM, 1:1

PREPARED FOR:
DREAM DESIGN INTERNATIONAL, INC.
5202 W. MAIN ST., SUITE D
RAPID CITY, S.D. 57701
(605) 348-0538



**ARLETH &
ASSOCIATES**
382 MAIN STREET
DEADWOOD, SD 57732
605-678-1637

PROJECT:
MISC. DOCUMENT - 1 OF 1
DRAINAGE EASEMENT
A PORTION OF SECTION 29
T1N, R8E, BHM,
RAPID CITY
PENNINGTON CO., S.D.
JOB NO. 99-0040.5

DATE: 10/25/2002
SCALE: 1"=20'
DRAWN BY: KT
APPROVED: _____