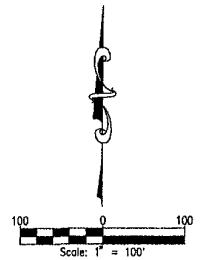
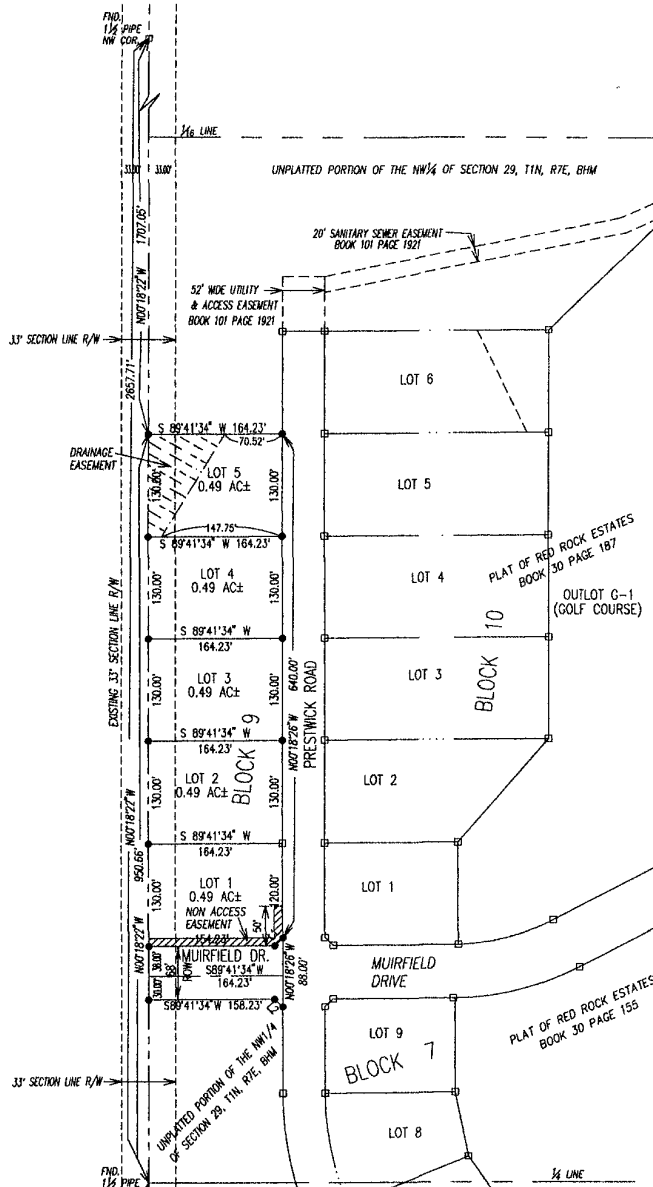


# PLAT OF RED ROCK ESTATES

INCLUDING LOTS 1 THRU 5, BLOCK 9  
AND DEDICATED STREET  
THE UNPLATTED PORTION OF SW 1/4 & THE UNPLATTED PORTION OF NW 1/4  
SECTION 29, T1N, R7E, BHM  
RAPID CITY, PENNINGTON COUNTY, SOUTH DAKOTA



| NUMBER | DIRECTION     | DISTANCE |
|--------|---------------|----------|
| L1     | N 44°41'34" E | 14.14'   |
| L2     | N 45°18'26" W | 14.14'   |

**LEGEND**  
 ● DENOTES SET 5/8" REBAR WITH SURVEY CAP MARKED "RLS 3977"  
 □ DENOTES FOUND SURVEY MONUMENT  
 BASIS OF BEARING: PER PREVIOUSLY RECORDED PLAT(S).  
 [Hatched Box] = DEDICATED EASEMENT  
 [Diagonal Lines Box] = NON-ACCESS EASEMENT

- NOTES:**
- MINOR DRAINAGE AND UTILITY EASEMENTS ARE HEREBY ESTABLISHED 8' WIDE ON THE INTERIOR SIDE OF ALL LOT LINES AND EXTERIOR OF RIGHT-OF-WAY. (EXCEPT WHERE MAJOR DRAINAGE EASEMENTS ARE LOCATED)
  - TOTAL PLATTED AREA: 2.708 ACRES; LOTS: 2.449 ACRES. PUBLIC RIGHT-OF-WAY: 0.259 ACRES DEDICATED FOR PUBLIC USE BY THIS PLAT.
  - NON-ACCESS EASEMENTS ARE HEREBY ESTABLISHED ALONG THE FIRST FIFTY FEET OF CORNER LOTS OR AS INDICATED HEREON.
  - ALL BUILDERS SHALL MAINTAIN EXISTING DRAINAGE FACILITIES IN ACCORDANCE TO APPROVED CONSTRUCTION PLANS. (RAPID CITY ENR. DIV. REQUESTED NOTE)

PREPARED FOR:  
 DREAM DESIGN INTERNATIONAL, INC.  
 3202 WEST MAIN STREET SUITE D  
 RAPID CITY, SD 57701  
 (605) 348-0538

C:\DDI-PROJECTS\0040-RR-IIIIB\III-RR-IIIIB-PLAT-RR-IIIIB-PLAT-SL.dwg, Layout1, 5/8/2003 3:21:38 PM, 1:2.22838