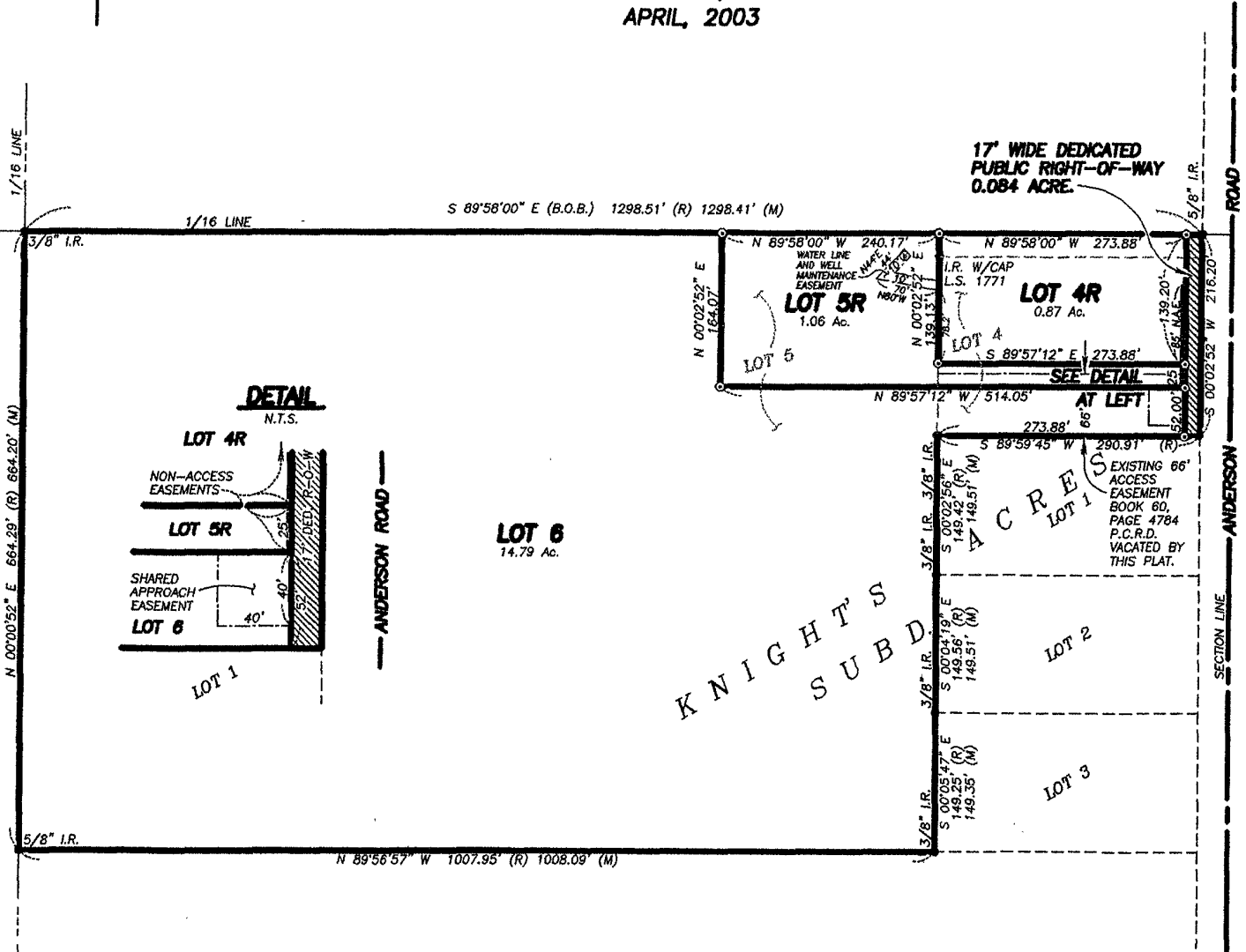




# SURVEY PLAT OF

**LOT 4R, LOT 5R, AND LOT 6 OF KNIGHT'S ACRES SUBDIVISION,  
 SHARED APPROACH EASEMENT, VACATED ACCESS EASEMENT,  
 AND DEDICATED ANDERSON ROAD RIGHT-OF-WAY;  
 FORMERLY LOT 4 AND LOT 5 OF KNIGHT'S ACRES SUBDIVISION;  
 LOCATED IN THE N1/2 SE1/4 NE1/4 OF SECTION 14,  
 TOWNSHIP 1 NORTH, RANGE 8 EAST OF THE BLACK HILLS MERIDIAN,  
 PENNINGTON COUNTY, SOUTH DAKOTA.**

APRIL, 2003

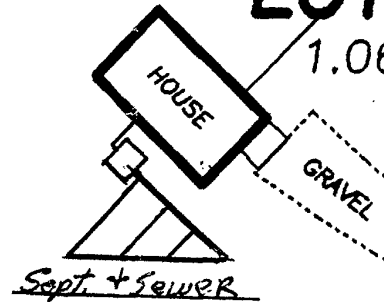


S 00°00'11" W

164.23'

240.14'  
*Comm. Well*

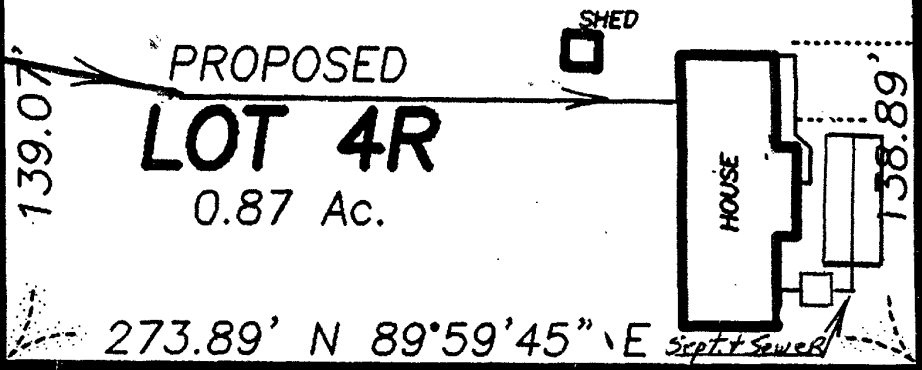
PROPOSED  
**LOT 5R**  
1.06 Ac.



S 89°59'45" W  
514.05'

273.91'  
SHEDS

PROPOSED  
**LOT 4R**  
0.87 Ac.



273.89' N 89°59'45" E *Sept. & Sewer*

273.89'

S 89°59'45" W 290.91' (R)

52' 25"

S 00°00'18" E 215.88'