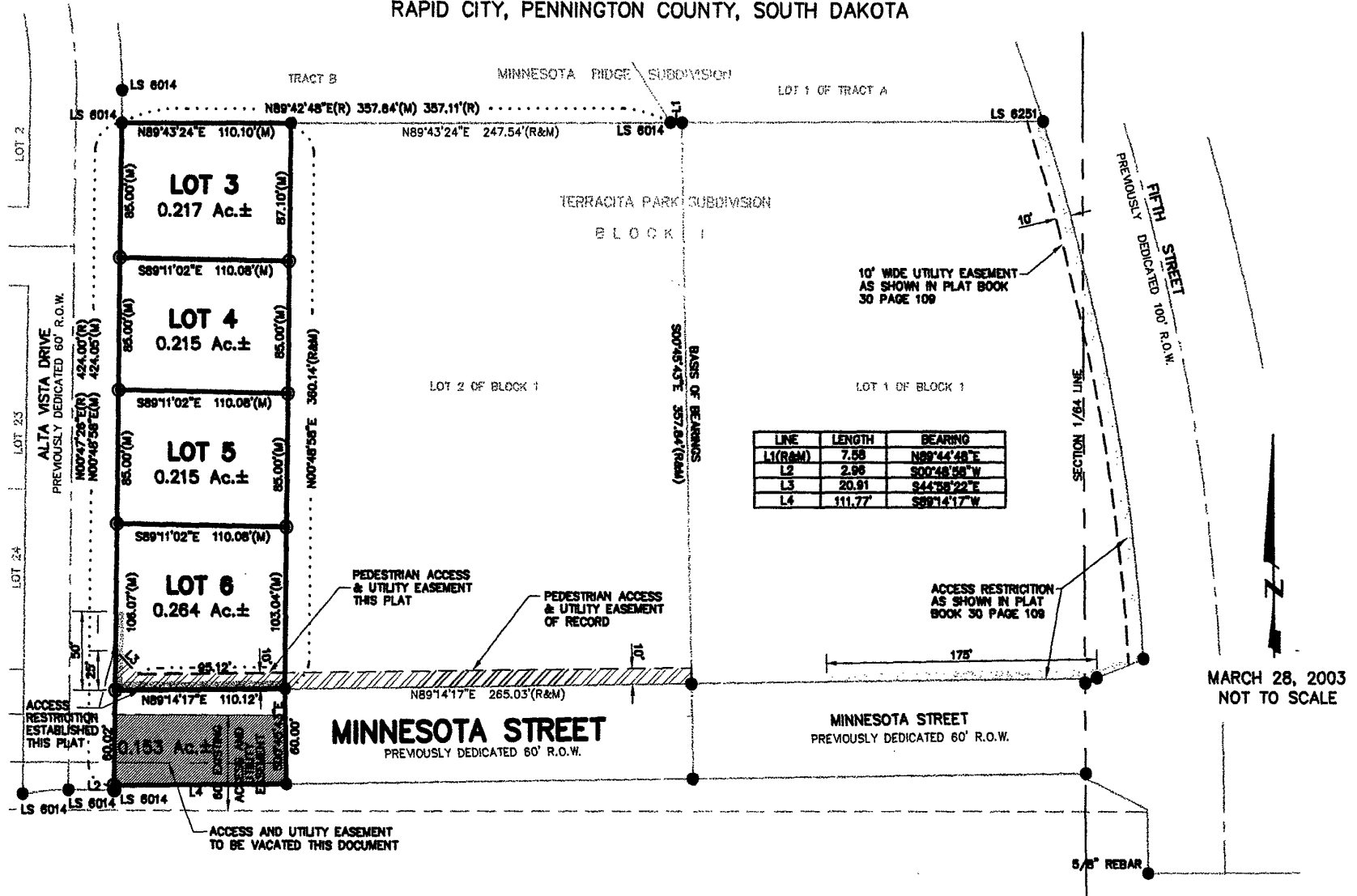


**PLAT OF  
 LOTS 3 THROUGH 6 OF BLOCK 1,  
 TERRACITA PARK SUBDIVISION,  
 AND MINNESOTA STREET RIGHT-OF-WAY**  
 (formerly a portion of the SW¼ of the NW¼ of the SE¼ of Section 13)  
 LOCATED IN THE SW¼ OF THE NW¼ OF THE SE¼  
 SECTION 13, T1N, R7E, BHM  
 RAPID CITY, PENNINGTON COUNTY, SOUTH DAKOTA



MARCH 28, 2003  
NOT TO SCALE