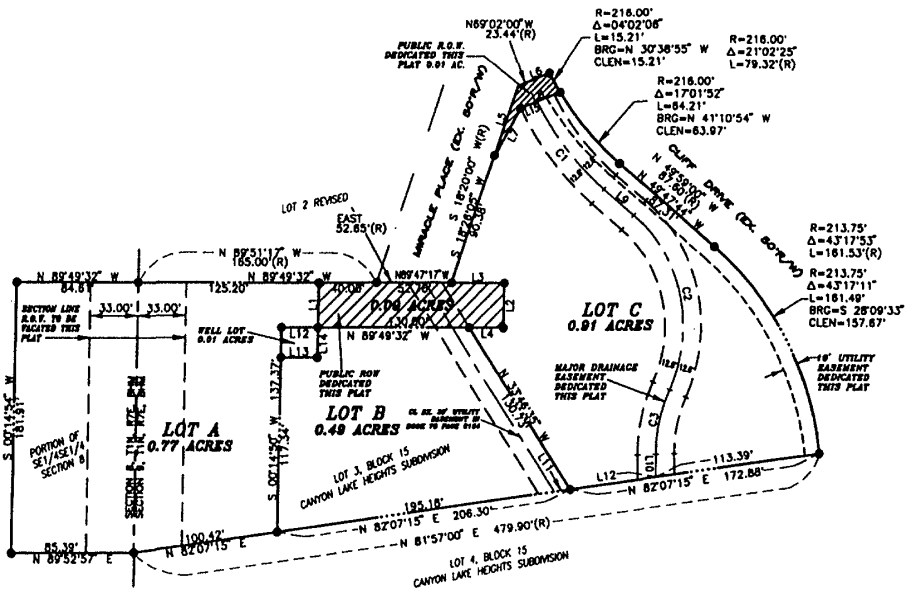


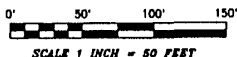
PLAT OF MIRACLE PLACE

PLAT OF LOTS A, B, AND C, CANYON LAKE HEIGHTS SUBDIVISION, FORMERLY LOT 3, BLOCK 16 OF CANYON LAKE HEIGHTS SUBDIVISION, LOCATED IN THE SE1/4SE1/4 SECTION 8, AND THE SW1/4 OF SECTION 9; ALL IN T1N, R7E, BHM, RAPID CITY, PENNINGTON COUNTY, SOUTH DAKOTA.



LINE	BEARING	DISTANCE
L1	S 00°14'50" W	30.08'
L2	S 00°14'50" W	30.00'
L3	S 89°47'17" E	37.24'
L4	S 89°49'32" E	23.92'
L5	N 18°26'05" E	49.98'
L6	N 88°51'26" E	23.33'
L7	N 27°34'50" E	40.21'
L8	S 68°51'26" W	29.65'
L9	N 49°47'44" W	27.21'
L10	N 01°23'47" W	15.33'
L11	N 82°07'15" E	11.12'
L12	N 82°07'15" E	59.50'
L13	S 88°49'32" E	25.00'
L14	S 00°14'50" W	20.00'
L15	S 68°51'26" W	12.49'

CURVE	RADIUS	DELTA ANGLE	ARC LENGTH	CHORD BEARING	CHORD LEN
C1	200.00'	21°37'49"	78.67'	S 36°48'49" E	78.20'
C2	100.00'	73°55'59"	129.04'	S 12°48'44" E	120.27'
C3	100.00'	25°32'03"	44.57'	N 11°22'14" E	44.20'



NOTES:
UTILITY AND MINOR DRAINAGE EASEMENTS: 8' ON THE INTERIOR SIDES OF ALL LOT LINES, UNLESS OTHERWISE SHOWN.