

02PL107

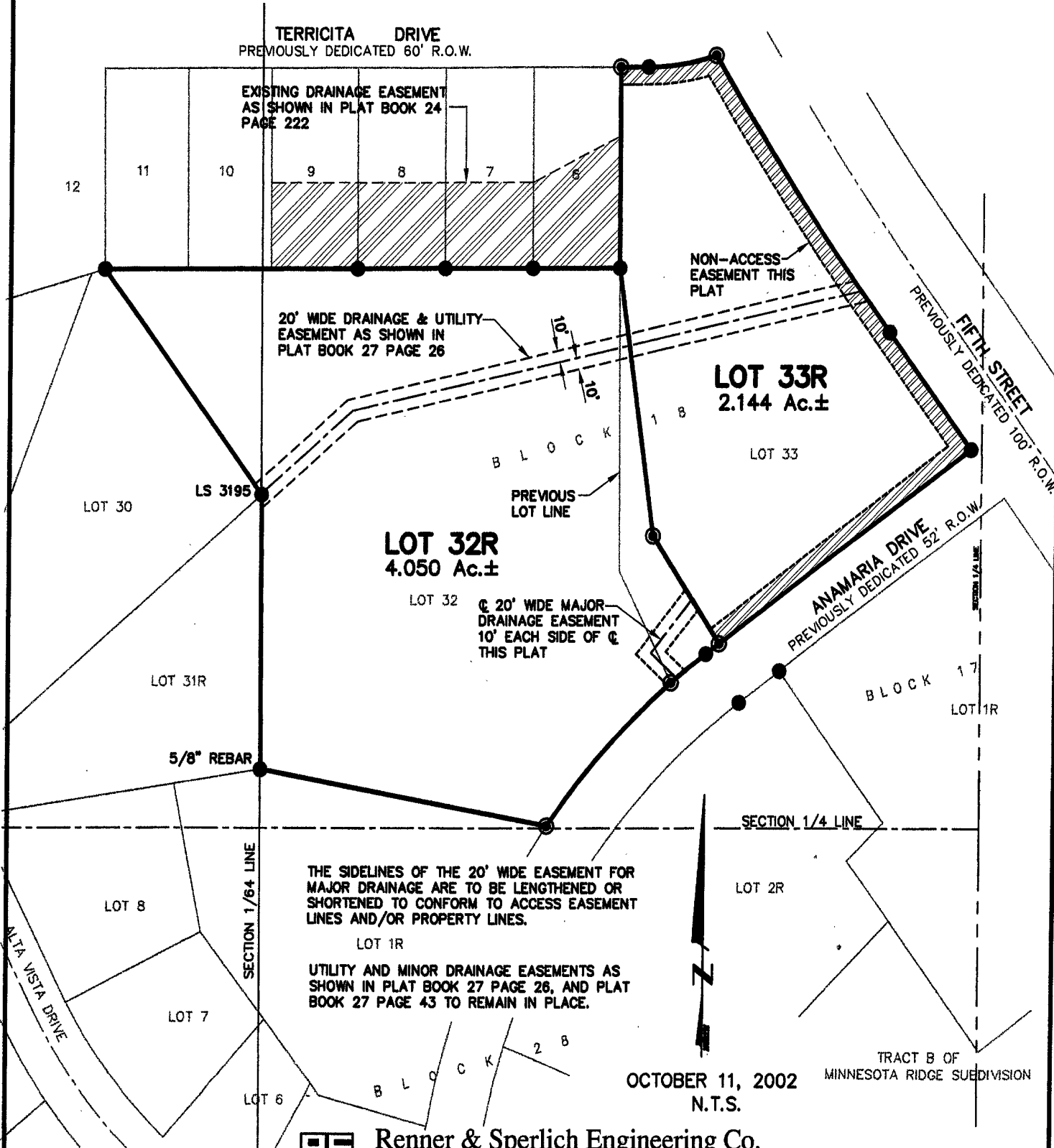
PLAT OF LOT 32R AND LOT 33R OF BLOCK 18 OF ROBBINSDALE ADDITION NO. 10

(formerly Lot 32, and Lot 33 of Block 18 of Robbinsdale Addition No. 10)

LOCATED IN THE S½ OF THE NW¼

SECTION 13, T1N, R7E, BHM

RAPID CITY, PENNINGTON COUNTY, SOUTH DAKOTA



THE SIDELINES OF THE 20' WIDE EASEMENT FOR MAJOR DRAINAGE ARE TO BE LENGTHENED OR SHORTENED TO CONFORM TO ACCESS EASEMENT LINES AND/OR PROPERTY LINES.

UTILITY AND MINOR DRAINAGE EASEMENTS AS SHOWN IN PLAT BOOK 27 PAGE 26, AND PLAT BOOK 27 PAGE 43 TO REMAIN IN PLACE.

OCTOBER 11, 2002
N.T.S.



Renner & Sperlich Engineering Co.

616 Sixth St. * Rapid City, SD 57701 * 605/342-1191
FAX: 605/342-1405 * E-MAIL: RSEC@RAPIDNET.COM