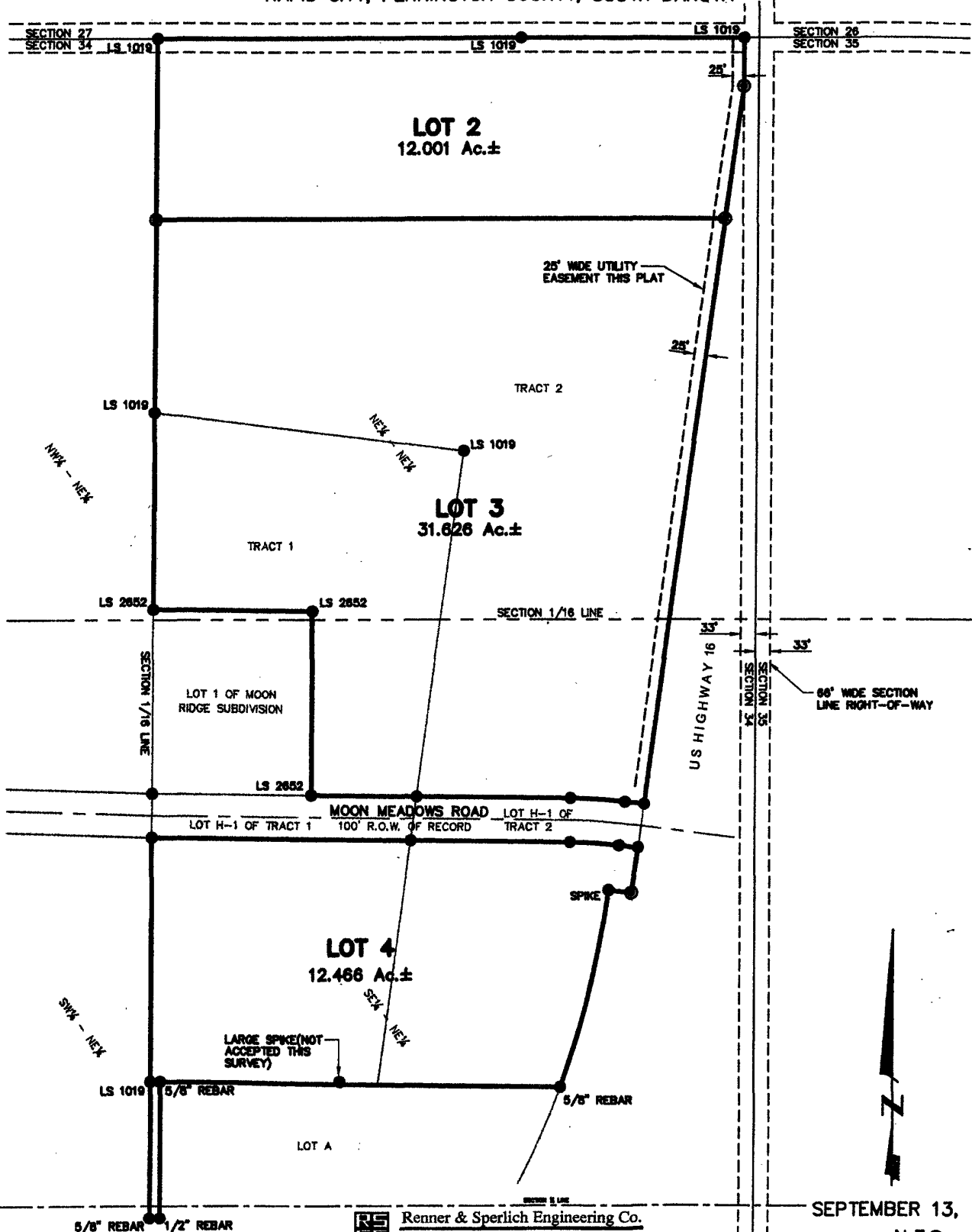


PLAT OF
LOTS 2 THRU 4,
MOON RIDGE SUBDIVISION
 (formerly a portion of Tract 1 & Tract 2 of Pioneer Subdivision)
 LOCATED IN THE E 1/2 OF THE NE 1/4
 SECTION 34, T1N, R7E, BHM
 RAPID CITY, PENNINGTON COUNTY, SOUTH DAKOTA



SEPTEMBER 13, 2002
 N.T.S.