

RECEIVED

Project Date: MAR 20 2003

zoning: Office Commercial District
 Occupancy Use: Chapal A-3
 Category: B

City of Rapid City
 Planning Department

Type of Construction: Y
 Lot Size: 1.71 ac
 Building SF: 7768
 Lot Coverage: 7768/74,400=10.4%

Parking:
 Funeral Home: 5756 x 7/1,000 = 40,232 Spaces
 Storage Area: 2013 x 20/1000 = 2033 Spaces
 Required Parking Spaces: 40,765 Spaces
 Provided Parking Spaces: 41 Spaces
 (37 Spaces + 4 Garage Spaces)

Parking Space Size:
 9'x18' Typical Space
 13'x18' Handicap Space
 18'x18' Handicap Van Accessible Space

Driveway Width:
 30 Degree Parking 26' Wide

Landscaping Required:
 65,720 Points
 (74,400-7768)

Landscaping Provided:
 11 Large Trees @ 2,000 pts ea = 22,000 pts
 12 Shrubs @ 250 pts ea = 3,000 pts
 9500 sq ft Grass @ 10 pts per sq ft = 95,000 pts
 Total Minimum Points: 120,000 pts

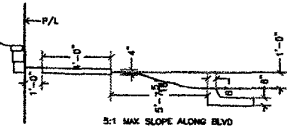
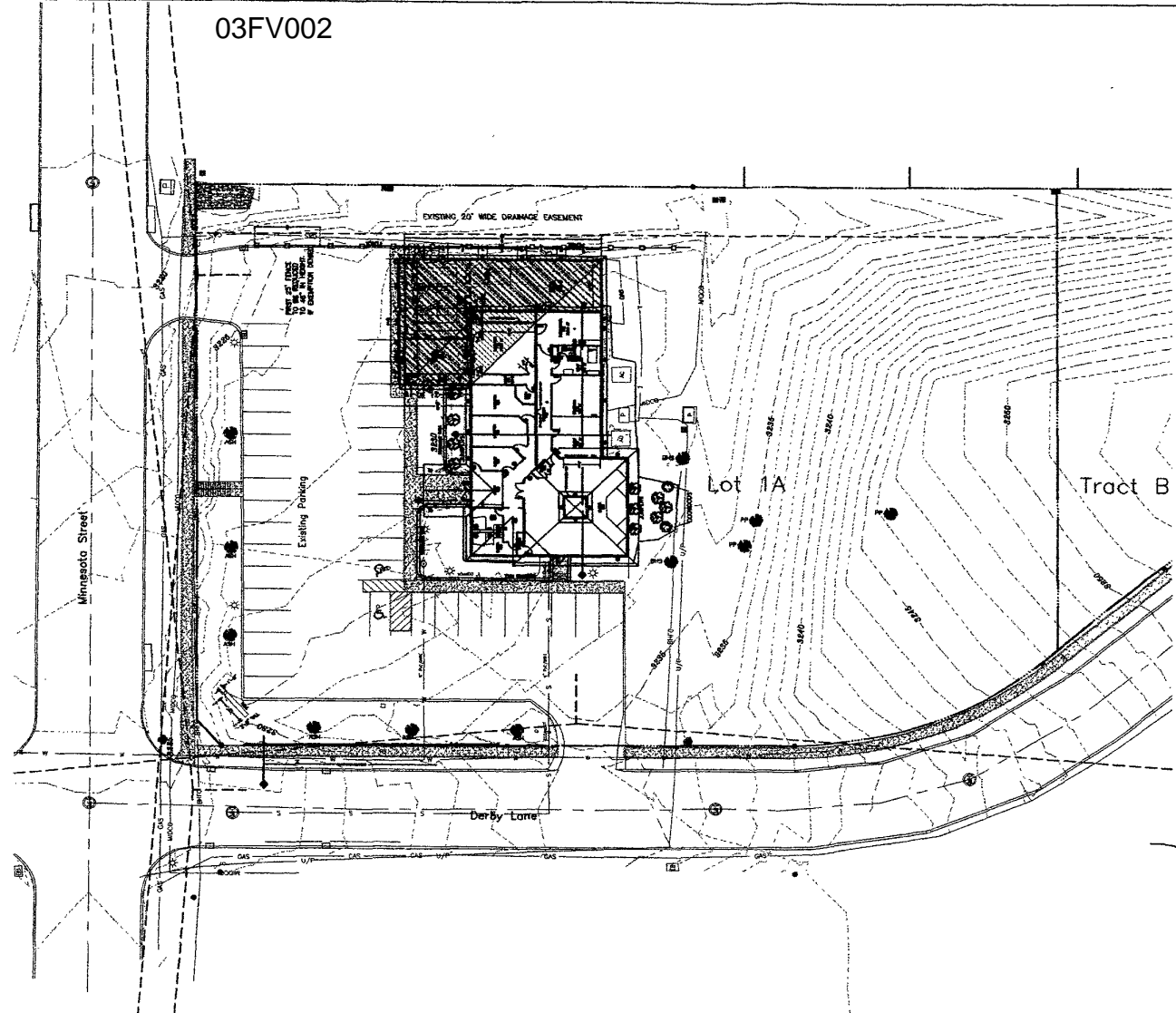
Legal Description:
 Lot A-1
 Merion Subdivision, Section 18,
 T1N, R9E, S9M, Road City,
 Hamington County, South Dakota

Planting Schedule:
 Proposed Shrub (250 Points)
 Deciduous Choices:
 Spines
 Viceroy
 Chingford
 Bramley
 Alpine Currant
 Red Twig Dogwood
 Evergreen Choices:
 Arctostaphylos
 Sea Green Juniper
 Mini Utah Juniper
 Snow Juniper

Proposed Large Trees (2000 Points)
 Deciduous Choices:
 Marzetta Seedling Ash
 Callerys Callernwood
 Seedling Honey Locust
 Evergreen Choices:
 Pines
 Scotch Pine
 Juniper
 Black Hills Spruce

KIRK FUNERAL HOME SITE PLAN

Scale 1:20



Minnesota Street

P

3220

3225

ASH

ASH

ASH

FIRST 25' FENCE TO BE REDUCED TO 48" IN HEIGHT IF EXEMPTION DENIED

Existing Parking

EXISTING 20' WIDE DRAINAGE EASEMENT



3230

REAR HALL

JUNIPERS

3235

MIDCE

BHFC

WOODWOODS

BHS

U/P

3235

3235

PP

PP

Lot 1A

3240

3240

PP

3245

RECEIVED

MAR 29 2003

Rapid City Planning Department