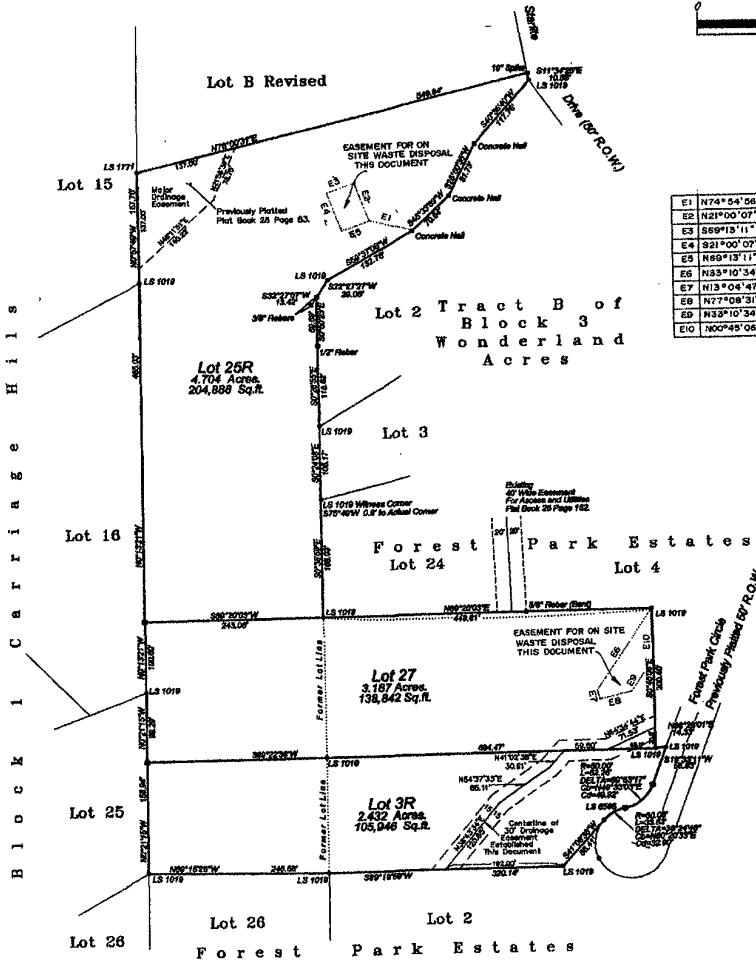


# Plat of Lots 3R, 25R and 27 of Forest Park Estates Subdivision

Formerly all of Lot 3 and Lot 25 of Forest Park Estates Subdivision and the North 200' of the South 940' of the West 450' of Tract A, all in Section 16, T1N, R7E, BHM, Rapid City, Pennington County, South Dakota.  
(Sheet 1 of 2)

Prepared By:  
Field Land Surveying and  
Consulting Engineers, Inc.  
P.O. Box 8154  
Rapid City, South Dakota 57709  
Phone 605-349-1638  
Fax 605-341-1112  
e-mail field@fldnet.com  
Project # 97-10-01

03PL016



### NOTES

Basis of Bearings is Solar Observation

UTILITY AND MINOR DRAINAGE EASEMENTS  
8' ON THE INTERIOR SIDE OF ALL LOT LINES

SEE PREVIOUS PLATS OF FOREST PARK ESTATES,  
SUBDIVISION FOR RECORDED MEASUREMENTS.  
Plat Book 26 Page 152 and Book 28 Page 83.

All major drainage easement shown hereon shall be kept free of all obstructions including but not limited to buildings, walls, fences, hedgerows, trees and shrubs. These easements grant to all public authorities the right to construct, operate, maintain, inspect and repair such improvements and structures as it deems expedient to facilitate drainage from any source.