

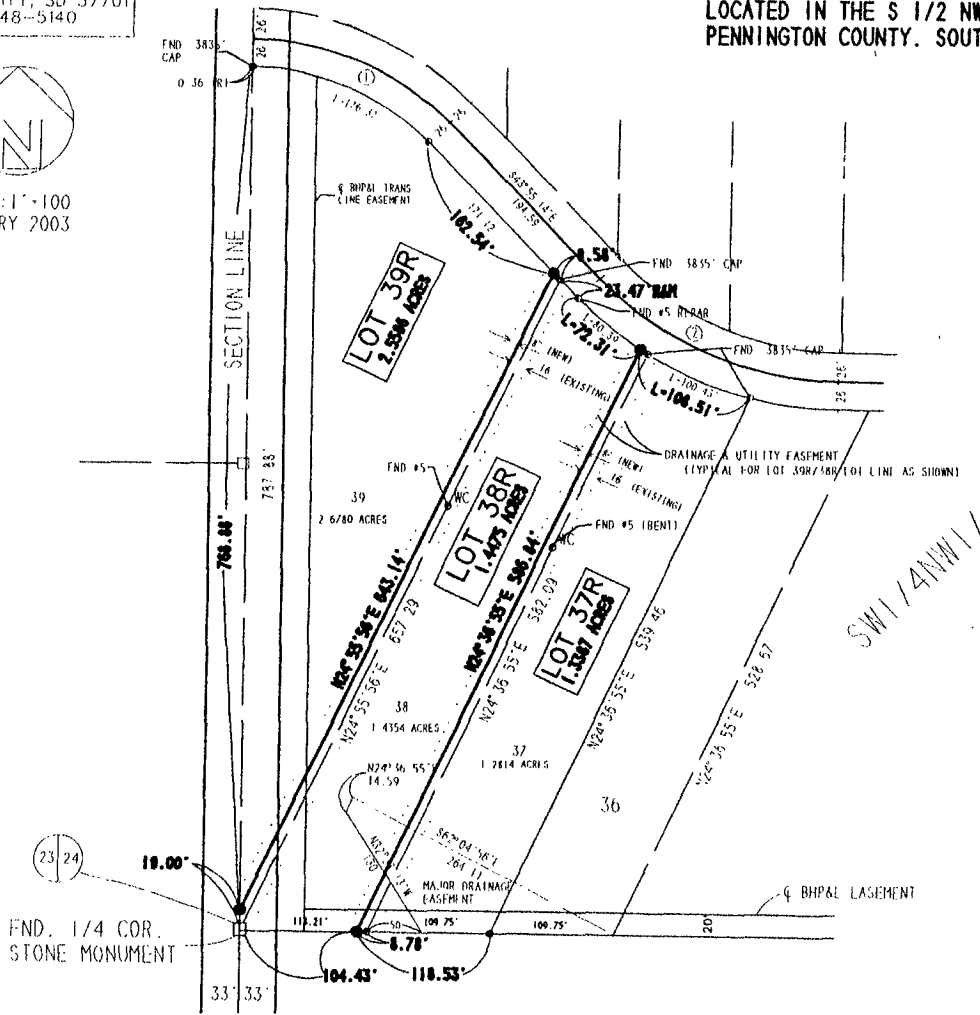
03PL023

PLAT OF LOT 37R, 38R AND 39R -
A REPLAT OF LOTS 37,
PLAT OF LOTS 1 THROUGH 39 EN
LOCATED IN THE S 1/2 NW 1/4
PENNINGTON COUNTY, SOUTH DAK

PREPARED BY:
DAN BRITTON
4515 STEELER LANE
RAPID CITY, SD 57701
(605) 348-5140



SCALE: 1"=100
JANUARY 2003



SW 1/4 NW 1/4

FND. 1/4 COR.
STONE MONUMENT