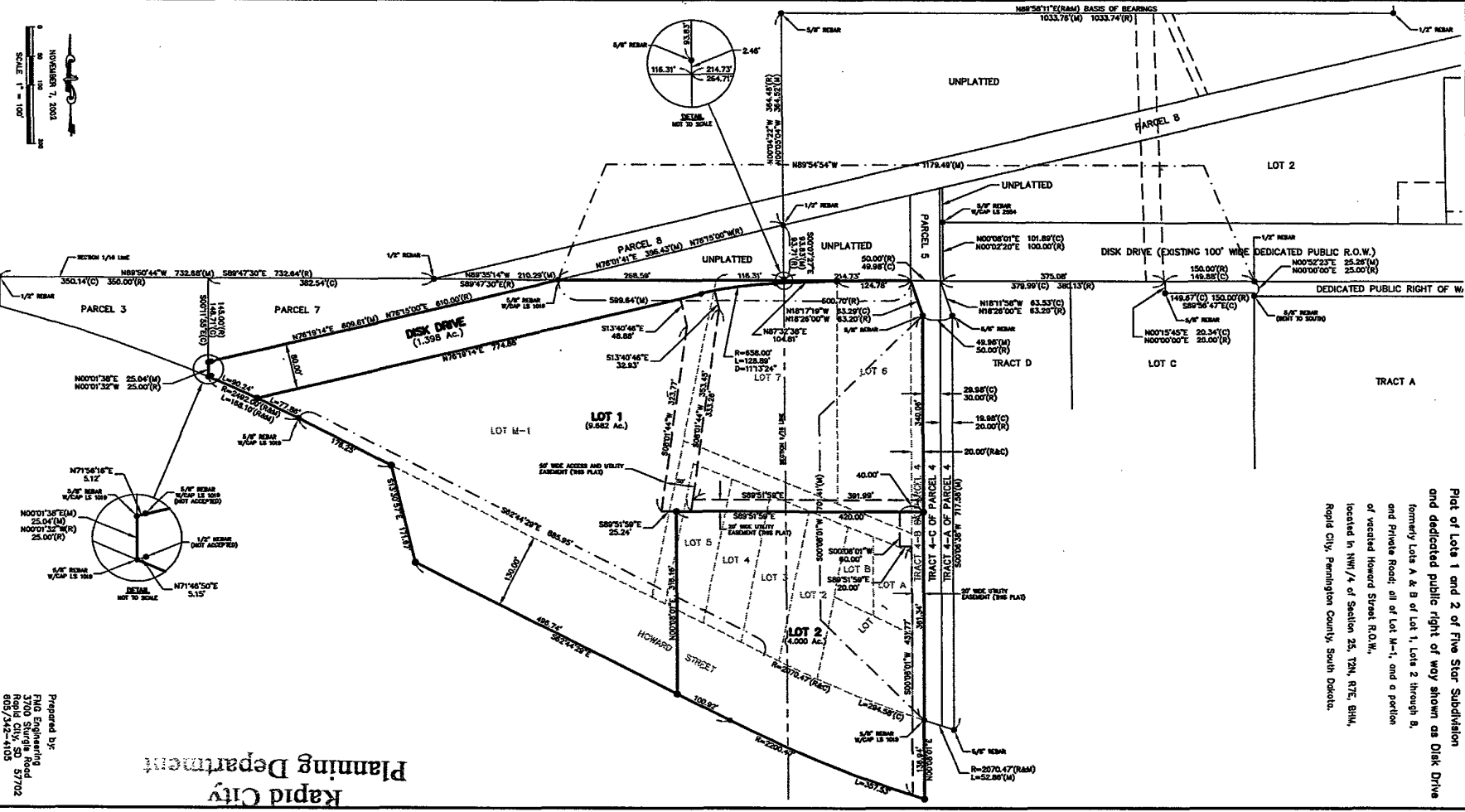
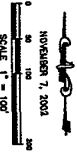


KS



8635

Plot of Lots 1 and 2 of Five Star Subdivision and dedicated public right of way shown as Disk Drive formerly Lots A & B of Lot 1, Lots 2 through 8, and Private Road, all of Lot M-1, and a portion of vacated Howard Street R.O.W., located in NW 1/4 of Section 25, T2N, R7E, B1M, Rapid City, Pennington County, South Dakota.

Rapid City  
Planning Department

Prepared by:  
FMC Engineering  
3700 Sturgis Road  
Rapid City, SD 57702  
605/342-4105

SHEET 1 OF 2