

FND CAP "4208"  
2.39' (C) WEST OF  
SECTION LINE

SEE DETAIL A

03PL013

LOT  
31

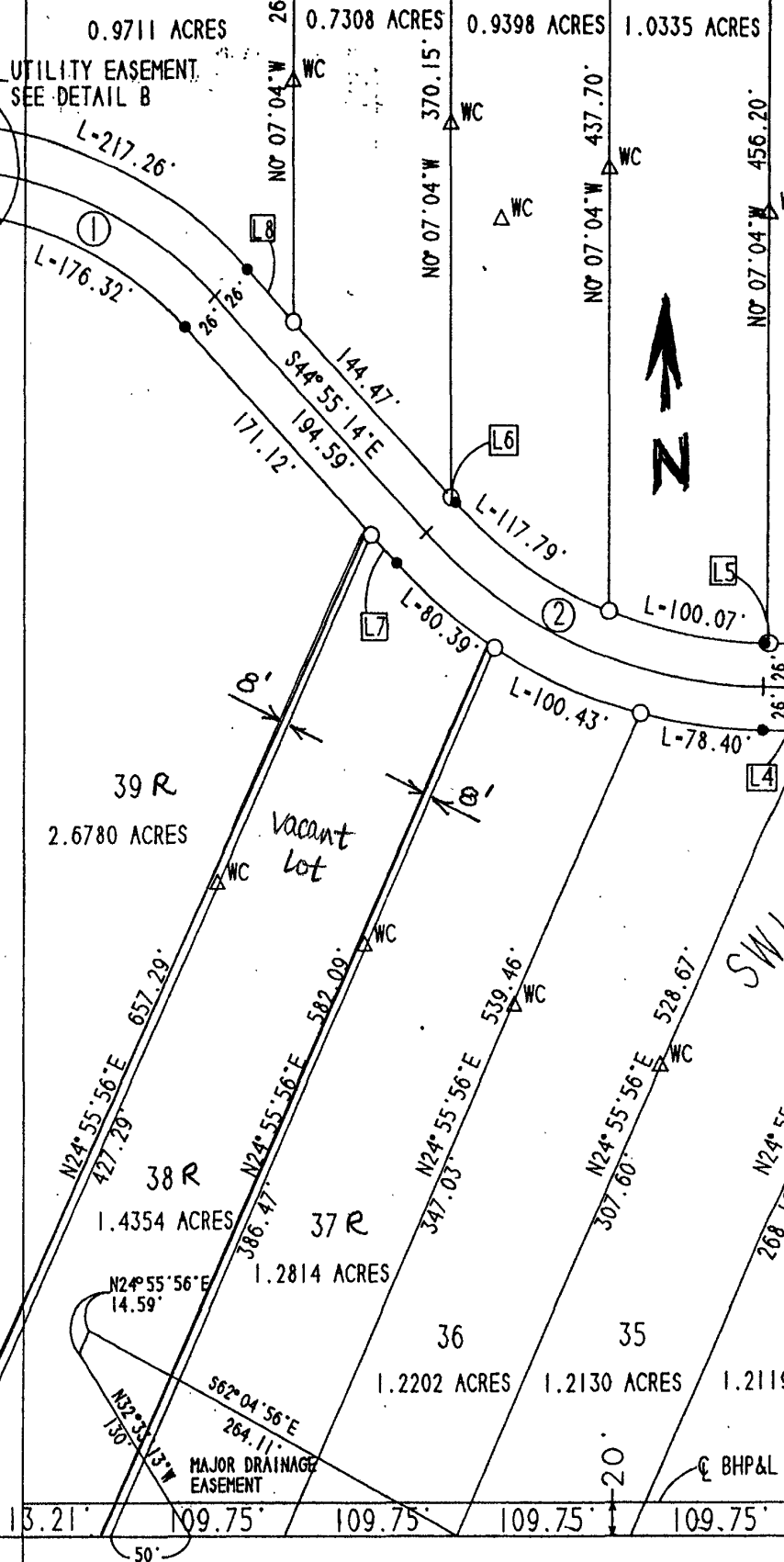
FND #5 REBAR  
2.62' WEST OF  
SECTION LINE

BASIS OF BEARINGS -  
RECORD BEARING ON EAST  
LINE OF ENCH. HILLS NO.3

FND. 1/4 COR.  
STONE MONUMENT

23 | 24

150  
990.00'  
SECTION LINE  
787.88'  
445.0' (R) 425.10' (M)  
33' 33'

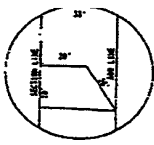
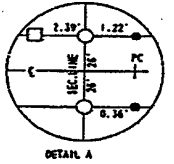


FND NW COR. 24 COR. STONE MONUMENT

03PL013

PLAT OF LOTS 1 THROUGH 39 ENCHANTED HILLS SUBDIVISION NO. 4 LOCATED IN THE S 1/2 NE 1/4 OF SEC. 24 - T1N - R7E B1M RAPID CITY, PENNINGTON COUNTY, SD

SEC 24 page 214 Surveyors Affidavit on Record Court to read S2, N4W2.



SCALE: 1"=100' MAY 1998

1. ANY MAJOR DRAINAGE EASEMENT SHOWN HEREON SHALL BE KEPT FREE OF ALL OBSTRUCTIONS INCLUDING BUT NOT LIMITED TO BUILDINGS, WALLS, FENCES, HEDGES, TREES AND SHRUBS. THESE EASEMENTS GRANT TO ALL PUBLIC AUTHORITIES THE RIGHT TO CONSTRUCT, OPERATE, MAINTAIN, INSPECT, AND REPAIR SUCH IMPROVEMENTS AND STRUCTURES AS IT DEEMS EXPEDIENT TO FACILITATE DRAINAGE FROM ANY SOURCE.

2. 1' WIDE UTILITY AND DRAINAGE EASEMENT ON EACH SIDE AND REAR LOT LINES OF LOTS 1 THRU 39

3. ALL ROW SHOW IS 52 FEET EXCEPT C&L OF SAC AND DEDICATED TO PUBLIC USE TOTAL AREA DEDICATED TO PUBLIC ROW IS 3.39 ACRES.

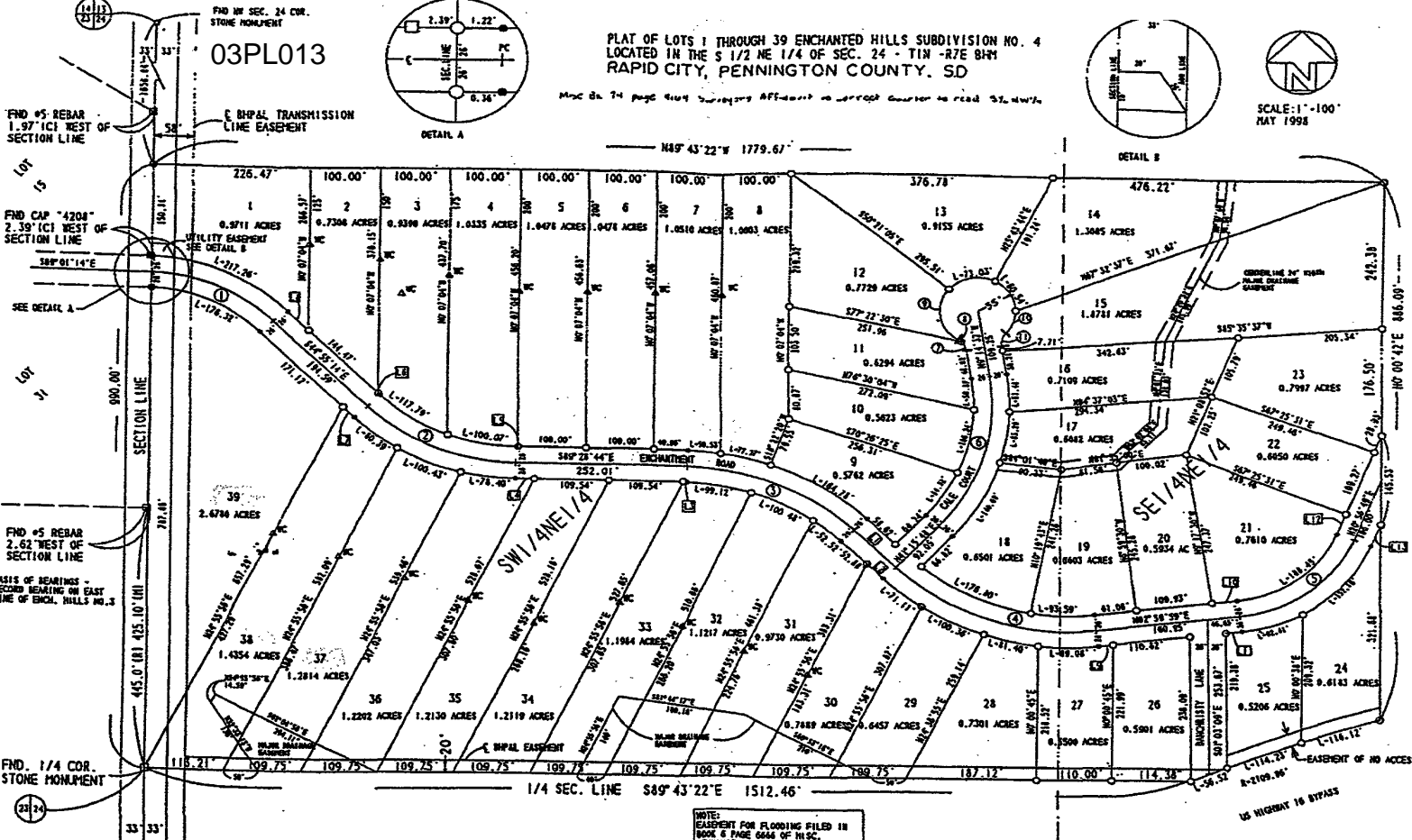
FND #5 REBAR 1.97' CI WEST OF SECTION LINE

FND CAP "4208" 2.39' CI WEST OF SECTION LINE

FND #5 REBAR 2.62' WEST OF SECTION LINE

BASIS OF BEARINGS - RECORDED BEARING ON EAST LINE OF ENCH. HILLS NO. 3

FND. 1/4 COR. STONE MONUMENT



LEGEND

- (R) RECORDED
- (PI) RECORDED THIS SURVEY
- SET REBAR W/CAP STAMPED "DAN BRITTON 1835" THIS SURVEY
- SET REBAR - NO CAP AT CURVE PC AND PT THIS SURVEY
- FOUND SURVEY MONUMENT AS NOTED
- △ SET REBAR W/CAP AS WITNESS CORNER

FOR CURVE DATA

CURVE NO.	Δ	R	T	L
CURVE NO. 1	45 06' 00"	250.00'	194.79'	194.79'
CURVE NO. 2	44 33' 30"	300.00'	125.88'	139.57'
CURVE NO. 3	44 33' 30"	350.00'	143.49'	172.35'
CURVE NO. 4	36 51' 00"	350.00'	171.12'	316.36'
CURVE NO. 5	42 03' 10"	200.00'	120.30'	214.61'
CURVE NO. 6	36 51' 00"	350.00'	171.12'	316.36'
CURVE NO. 7	37 15' 10"	350.00'	171.12'	316.36'
CURVE NO. 8	26 5'	350.00'	171.12'	316.36'
CURVE NO. 9	42 03' 10"	200.00'	120.30'	214.61'
CURVE NO. 10	35'	350.00'	171.12'	316.36'
CURVE NO. 11	35'	350.00'	171.12'	316.36'
CURVE NO. 12	35'	350.00'	171.12'	316.36'
CURVE NO. 13	35'	350.00'	171.12'	316.36'
CURVE NO. 14	35'	350.00'	171.12'	316.36'
CURVE NO. 15	35'	350.00'	171.12'	316.36'
CURVE NO. 16	35'	350.00'	171.12'	316.36'
CURVE NO. 17	35'	350.00'	171.12'	316.36'
CURVE NO. 18	35'	350.00'	171.12'	316.36'
CURVE NO. 19	35'	350.00'	171.12'	316.36'
CURVE NO. 20	35'	350.00'	171.12'	316.36'
CURVE NO. 21	35'	350.00'	171.12'	316.36'
CURVE NO. 22	35'	350.00'	171.12'	316.36'
CURVE NO. 23	35'	350.00'	171.12'	316.36'
CURVE NO. 24	35'	350.00'	171.12'	316.36'
CURVE NO. 25	35'	350.00'	171.12'	316.36'
CURVE NO. 26	35'	350.00'	171.12'	316.36'
CURVE NO. 27	35'	350.00'	171.12'	316.36'
CURVE NO. 28	35'	350.00'	171.12'	316.36'
CURVE NO. 29	35'	350.00'	171.12'	316.36'
CURVE NO. 30	35'	350.00'	171.12'	316.36'
CURVE NO. 31	35'	350.00'	171.12'	316.36'
CURVE NO. 32	35'	350.00'	171.12'	316.36'
CURVE NO. 33	35'	350.00'	171.12'	316.36'
CURVE NO. 34	35'	350.00'	171.12'	316.36'
CURVE NO. 35	35'	350.00'	171.12'	316.36'
CURVE NO. 36	35'	350.00'	171.12'	316.36'
CURVE NO. 37	35'	350.00'	171.12'	316.36'
CURVE NO. 38	35'	350.00'	171.12'	316.36'
CURVE NO. 39	35'	350.00'	171.12'	316.36'

NOTE: EASEMENT FOR FLOODING FILED IN BOOK 6 PAGE 6846 OF REC. PENNINGTON CO. REGISTER OF DEEDS.

PREPARED BY DANIEL E. BRITTON 4515 STEELER LANE RAPID CITY, SD 57701 PH (605) 348-5140