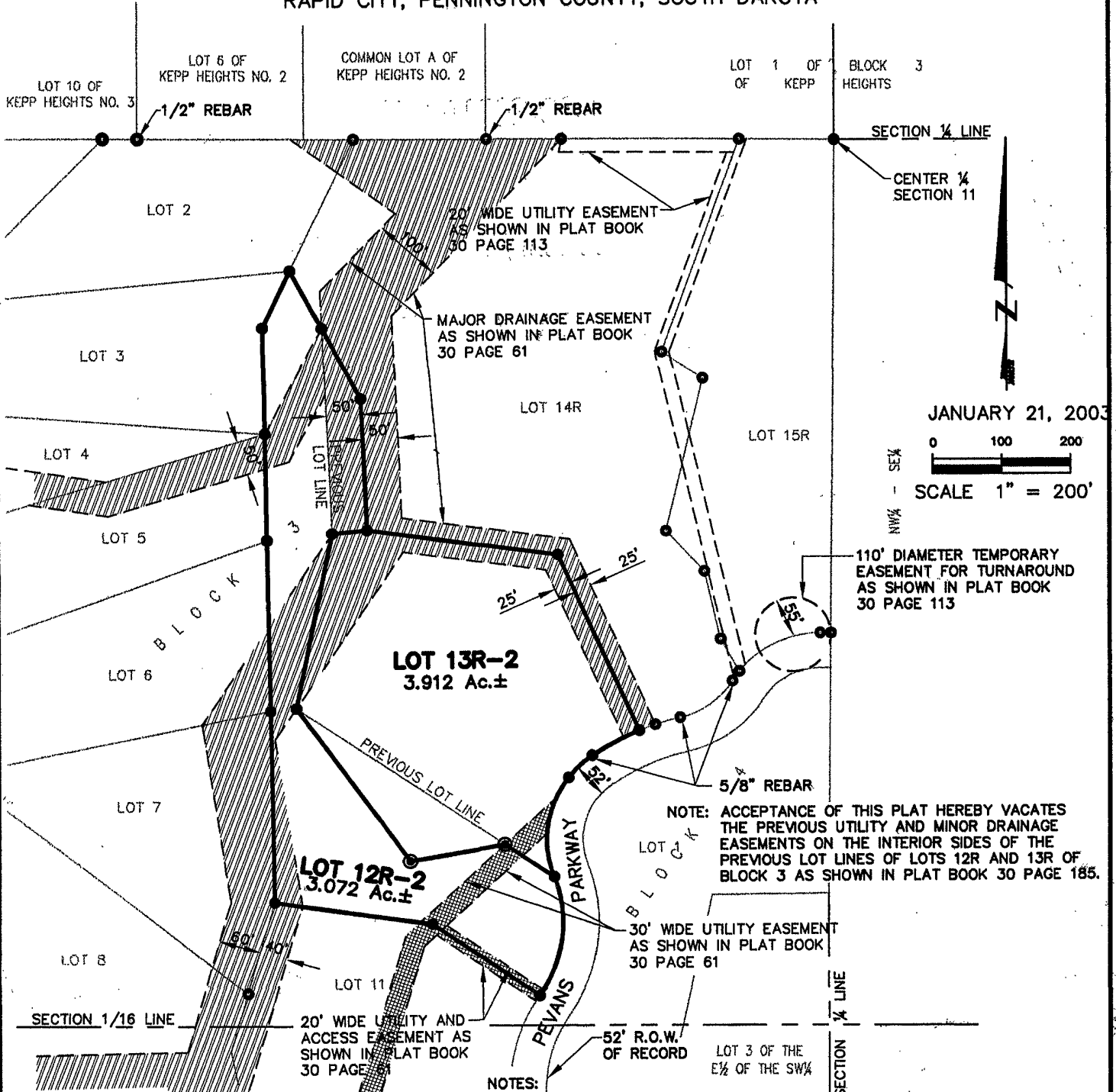


03PL011

PLAT OF LOT 12R-2 AND LOT 13R-2 OF BLOCK 3, SKYLINE PINES SUBDIVISION

(formerly Lots 12 & 13 of Block 3 of Skyline Pines Subdivision)

LOCATED IN THE SW¹/₄
SECTION 11, T1N, R7E, BHM
RAPID CITY, PENNINGTON COUNTY, SOUTH DAKOTA



JANUARY 21, 2003

0 100 200
SCALE 1" = 200'

110' DIAMETER TEMPORARY
EASEMENT FOR TURNAROUND
AS SHOWN IN PLAT BOOK
30 PAGE 113

NOTE: ACCEPTANCE OF THIS PLAT HEREBY VACATES
THE PREVIOUS UTILITY AND MINOR DRAINAGE
EASEMENTS ON THE INTERIOR SIDES OF THE
PREVIOUS LOT LINES OF LOTS 12R AND 13R OF
BLOCK 3 AS SHOWN IN PLAT BOOK 30 PAGE 185.

NOTES:

MAXIMUM DRIVEWAY SLOPE SHALL NOT EXCEED THE LIMITS ESTABLISHED IN
THE RAPID CITY STREET CRITERIA MANUAL WITHOUT WRITTEN APPROVAL OF
THE CITY OF RAPID CITY.

SPECIFIC GEOTECHNICAL AND SLOPE STABILITY INFORMATION MUST BE SUBMITTED
TO THE CITY OF RAPID CITY FOR REVIEW AND APPROVAL PRIOR TO THE
ISSUANCE OF ANY BUILDING PERMITS.

Renner & Sperlich Engineering Co.

616 Sixth St. • Rapid City, SD 57701 • 605/342-1191
FAX: 605/342-1405 • E-MAIL: RSE@RAPIDNET.COM



C:\Program Files\Land Desktop\DRAWINGS\1449\PLAT\12R2_13R2.dwg 01/23/03 01:20:19 PM MST