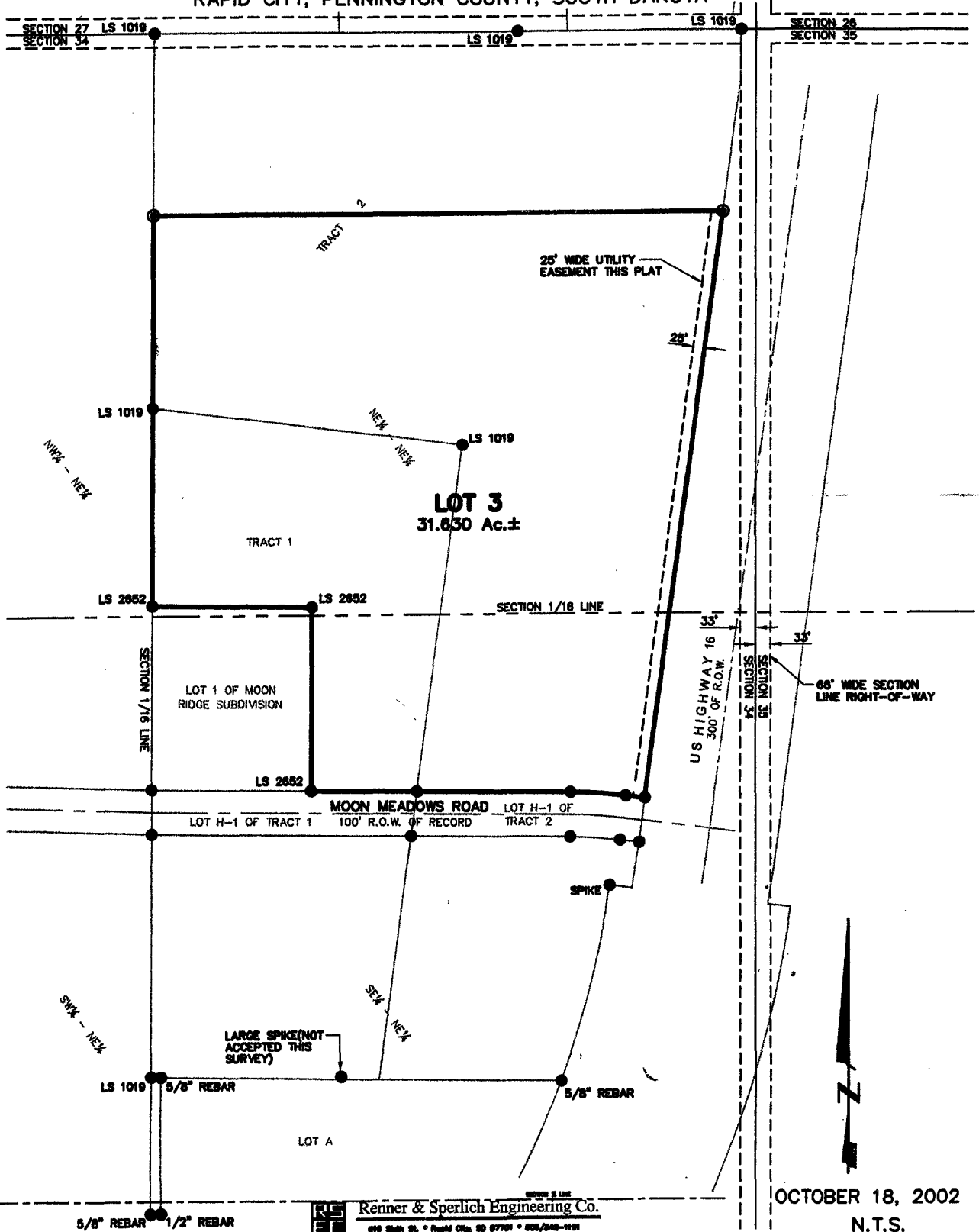


PLAT OF
LOT 3,
MOON RIDGE SUBDIVISION
 (formerly a portion of Tract 1 & a portion of Tract 2 of Pioneer Subdivision)
 LOCATED IN THE E 1/2 OF THE NE 1/4
 SECTION 34, T1N, R7E, BHM
 RAPID CITY, PENNINGTON COUNTY, SOUTH DAKOTA



OCTOBER 18, 2002
 N.T.S.

V:\Program Files\lang\Desktop\DRAWINGS\1041\1041.L4.dwg 10/18/02 11:17:09 AM MDJ