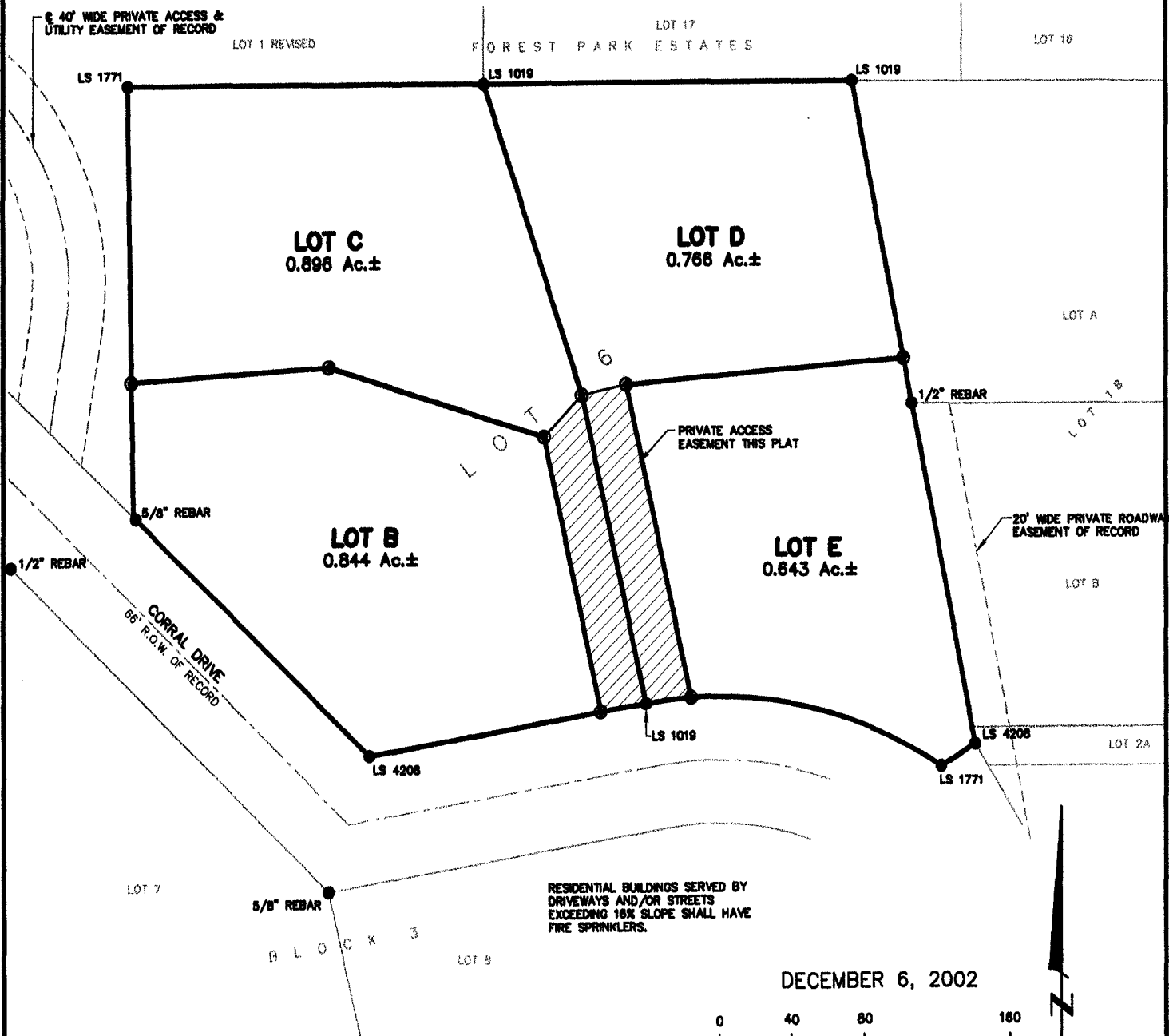


02PL126

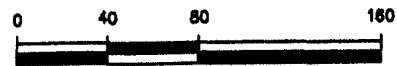
# PLAT OF LOTS B THRU E OF LOT 6 MIRACLE PINES SUBDIVISION

(formerly a portion of Lot 6 of Miracle Pines Subdivision)

LOCATED IN THE NW<sup>1</sup>/<sub>4</sub>  
SECTION 21, T1N, R7E, BHM  
RAPID CITY, PENNINGTON COUNTY, SOUTH DAKOTA



DECEMBER 6, 2002



SCALE 1" = 80'



## Renner & Sperlich Engineering Co.

616 Sixth St. \* Rapid City, SD 57701 \* 605/342-1191  
FAX: 605/342-1405 \* E-MAIL: RSEC@RAPIDNET.COM