

**EXHIBIT 'A'**  
**REPLATTED PORTIONS OF LOT 32 & LOT 33 OF BLOCK 18**  
**ROBBINSDALE ADDITION NO. 10**

LOCATED IN THE SE $\frac{1}{4}$  OF THE NW $\frac{1}{4}$   
 SECTION 13, T1N, R7E, BHM  
 RAPID CITY, PENNINGTON COUNTY, SOUTH DAKOTA

TERRICITA DRIVE

BLOCK 18

8 7 6

LINE	LENGTH	BEARING
L1	15.00	S53°27'20"W

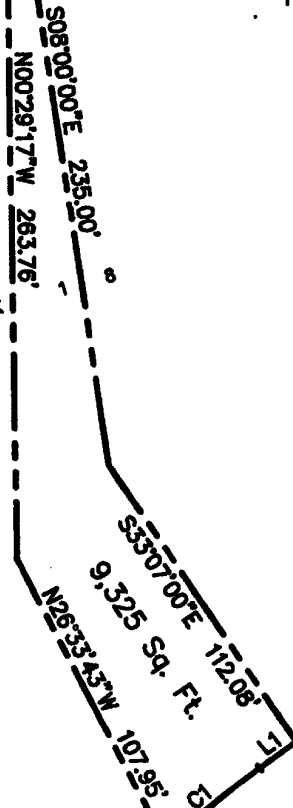
CURVE	LENGTH	RADIUS	DELTA	CHORD BEARING	CHORD DISTANCE
C1	40.00	648.63	3°32'00"	S51°41'20"W	39.99

FIFTH STREET

LOT 33  
 TOTAL Sq. Ft. = 102,730

LOT 32  
 TOTAL Sq. Ft. = 167,106

B L O C K



ANAMARIA DRIVE



OCTOBER 8, 2002



SCALE 1" = 60'



**Renner & Sperlich Engineering Co.**

616 Sixth St. • Rapid City, SD 57701 • 605/342-1181  
 FAX: 605/342-1408 • E-MAIL: RSE@RAPIDNET.COM

C:\Program Files\Land Desktop\DRAWINGS\1730\1730EXB.dwg 10/07/02 01:35:09 PM MDT