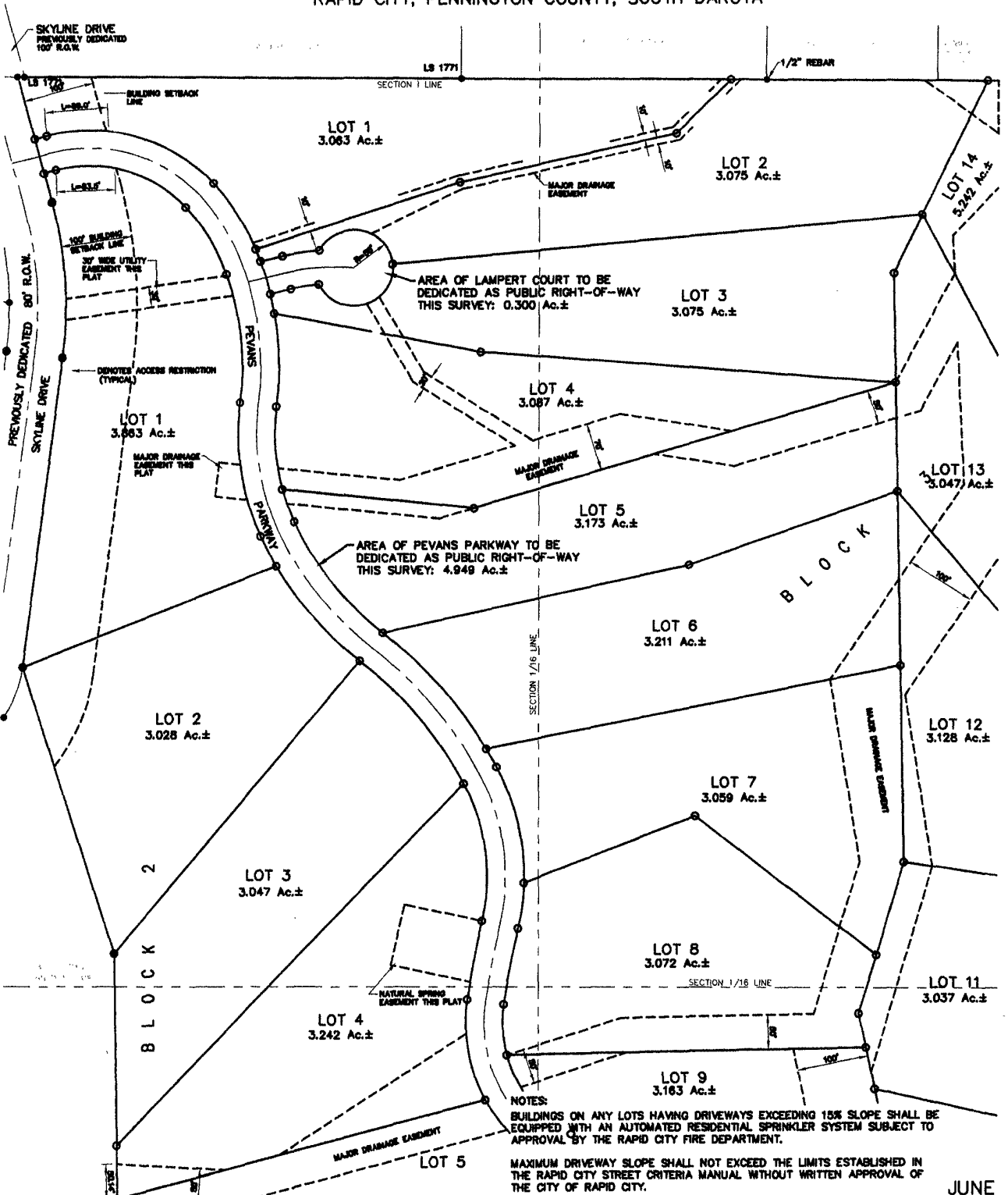


PLAT OF  
**LOTS 1 THRU 10 OF BLOCK 2, LOTS 1 THRU 14 OF BLOCK 3,  
 AND LOT 1 OF BLOCK 4**  
**SKYLINE PINES SUBDIVISION**

02VE023

(formerly a portion of the SW $\frac{1}{4}$  of Section 11, T1N, R7E, B.H.M.)  
 LOCATED IN THE SW $\frac{1}{4}$   
 SECTION 11, T1N, R7E, B.H.M.  
 RAPID CITY, PENNINGTON COUNTY, SOUTH DAKOTA



NOTES:  
 BUILDINGS ON ANY LOTS HAVING DRIVEWAYS EXCEEDING 15% SLOPE SHALL BE  
 EQUIPPED WITH AN AUTOMATED RESIDENTIAL SPRINKLER SYSTEM SUBJECT TO  
 APPROVAL BY THE RAPID CITY FIRE DEPARTMENT.

MAXIMUM DRIVEWAY SLOPE SHALL NOT EXCEED THE LIMITS ESTABLISHED IN  
 THE RAPID CITY STREET CRITERIA MANUAL WITHOUT WRITTEN APPROVAL OF  
 THE CITY OF RAPID CITY.

SPECIFIC GEOTECHNICAL AND SLOPE STABILITY INFORMATION MUST BE SUBMITTED  
 TO THE CITY OF RAPID CITY FOR REVIEW AND APPROVAL PRIOR TO THE  
 ISSUANCE OF ANY BUILDING PERMITS.

JUNE 7, 2001

N.T.S.

SHEET 1 OF 4

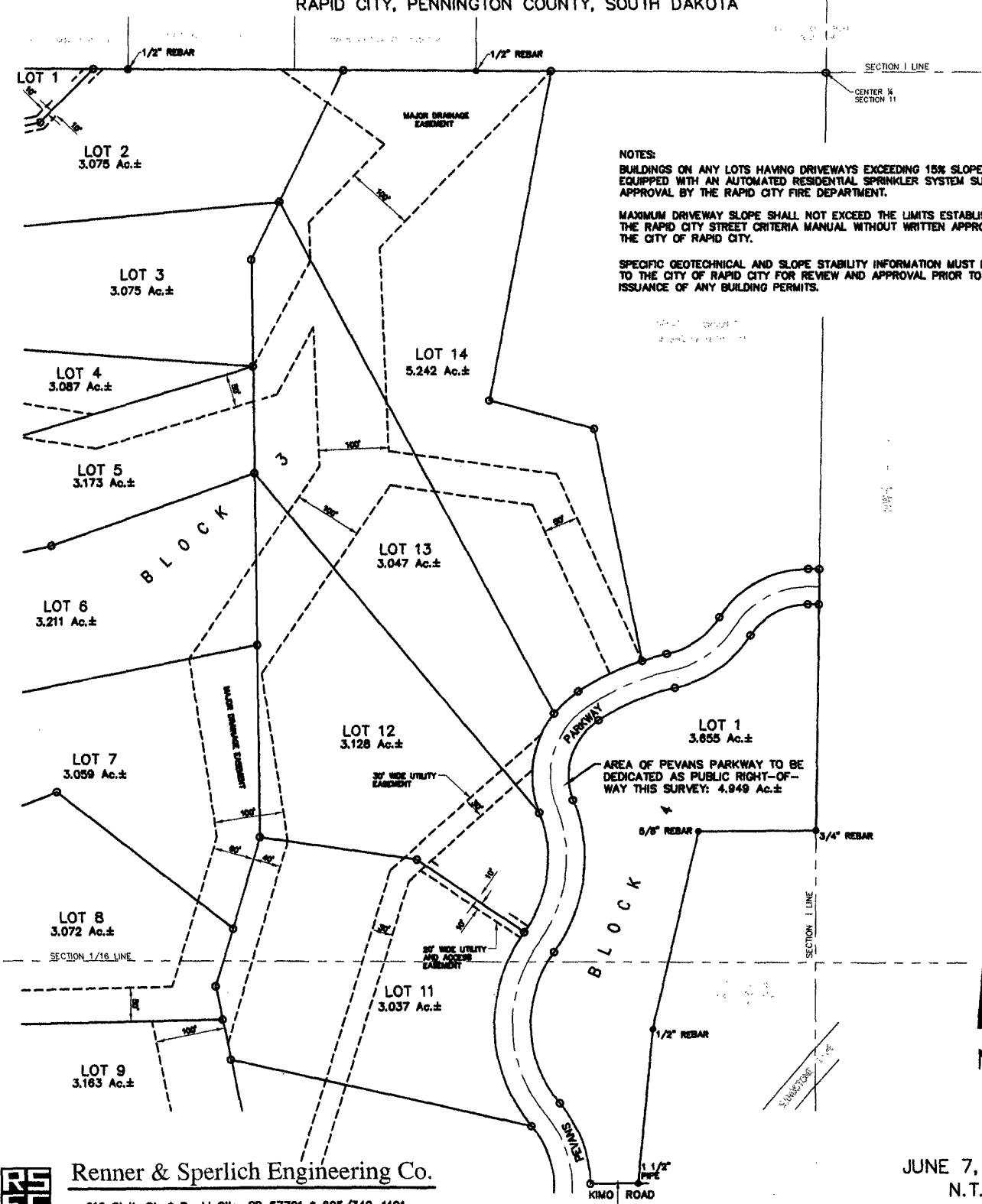
Renner & Sperlich Engineering Co.

616 Sixth St. • Rapid City, SD 57701 • 605/342-1181  
 FAX: 605/342-1405 • E-MAIL: RSE@RAPIDNET.COM



PLAT OF  
**LOTS 1 THRU 10 OF BLOCK 2, LOTS 1 THRU 14 OF BLOCK 3,  
 AND LOT 1 OF BLOCK 4**  
**SKYLINE PINES SUBDIVISION**

(formerly a portion of the SW $\frac{1}{4}$  of Section 11, T1N, R7E, B.H.M.)  
 LOCATED IN THE SW $\frac{1}{4}$   
 SECTION 11, T1N, R7E, B.H.M.  
 RAPID CITY, PENNINGTON COUNTY, SOUTH DAKOTA



**NOTES:**  
 BUILDINGS ON ANY LOTS HAVING DRIVEWAYS EXCEEDING 15% SLOPE SHALL BE EQUIPPED WITH AN AUTOMATED RESIDENTIAL SPRINKLER SYSTEM SUBJECT TO APPROVAL BY THE RAPID CITY FIRE DEPARTMENT.  
 MAXIMUM DRIVEWAY SLOPE SHALL NOT EXCEED THE LIMITS ESTABLISHED IN THE RAPID CITY STREET CRITERIA MANUAL WITHOUT WRITTEN APPROVAL OF THE CITY OF RAPID CITY.  
 SPECIFIC GEOTECHNICAL AND SLOPE STABILITY INFORMATION MUST BE SUBMITTED TO THE CITY OF RAPID CITY FOR REVIEW AND APPROVAL PRIOR TO THE ISSUANCE OF ANY BUILDING PERMITS.



**Renner & Sperlich Engineering Co.**

616 Sixth St. • Rapid City, SD 57701 • 605/342-1191  
 FAX: 605/342-1405 • E-MAIL: RSEC@RAPIDNET.COM

JUNE 7, 2001  
 N.T.S.

PLAT OF  
**LOTS 1 THRU 10 OF BLOCK 2, LOTS 1 THRU 14 OF BLOCK 3,  
 AND LOT 1 OF BLOCK 4**  
**SKYLINE PINES SUBDIVISION**

(formerly a portion of the SW $\frac{1}{4}$  of Section 11, T1N, R7E, B.H.M.)

LOCATED IN THE SW $\frac{1}{4}$   
 SECTION 11, T1N, R7E, B.H.M.

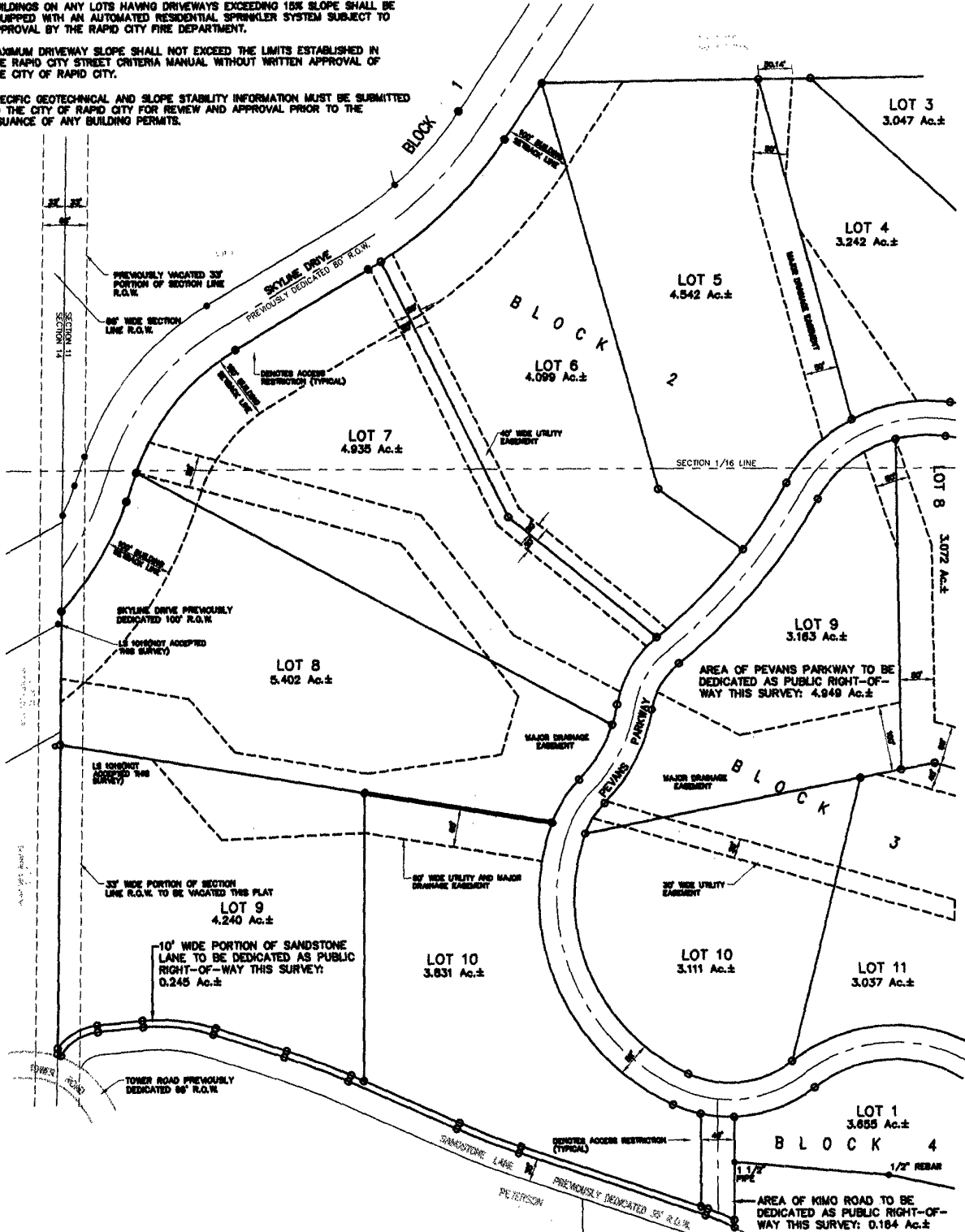
RAPID CITY, PENNINGTON COUNTY, SOUTH DAKOTA

**NOTES:**

BUILDINGS ON ANY LOTS HAVING DRIVEWAYS EXCEEDING 15% SLOPE SHALL BE EQUIPPED WITH AN AUTOMATED RESIDENTIAL SPRINKLER SYSTEM SUBJECT TO APPROVAL BY THE RAPID CITY FIRE DEPARTMENT.

MAXIMUM DRIVEWAY SLOPE SHALL NOT EXCEED THE LIMITS ESTABLISHED IN THE RAPID CITY STREET CRITERIA MANUAL WITHOUT WRITTEN APPROVAL OF THE CITY OF RAPID CITY.

SPECIFIC GEOTECHNICAL AND SLOPE STABILITY INFORMATION MUST BE SUBMITTED TO THE CITY OF RAPID CITY FOR REVIEW AND APPROVAL PRIOR TO THE ISSUANCE OF ANY BUILDING PERMITS.



**Renner & Sperlich Engineering Co.**

616 Sixth St. • Rapid City, SD 57701 • 605/342-1191  
 FAX: 605/342-1405 • E-MAIL: RSEC@RAPIDNET.COM

JUNE 7, 2001

N.T.S. SHEET 3 OF 4