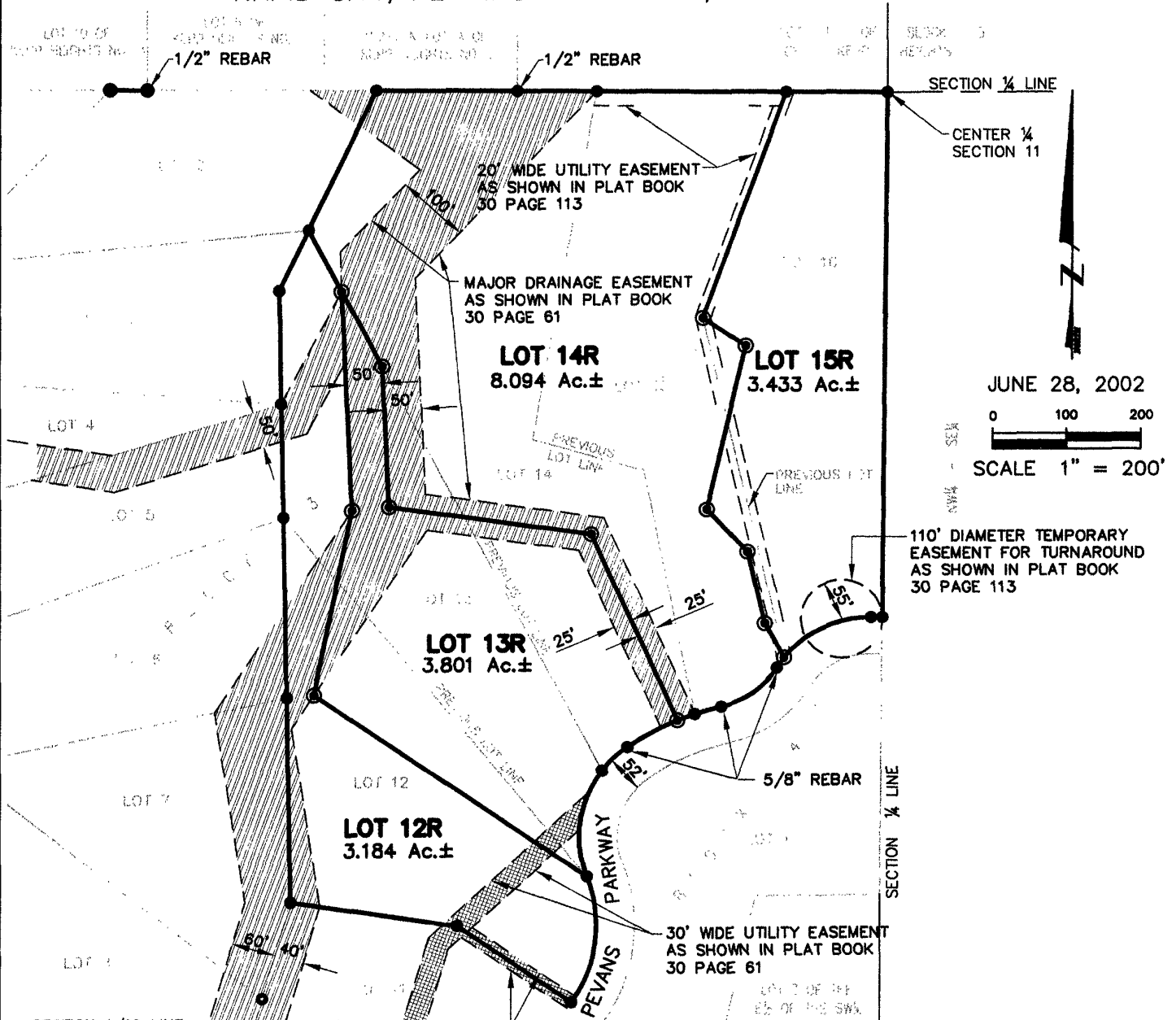


02VE020

# PLAT OF LOTS 12R, 13R, 14R, & 15R OF BLOCK 3, SKYLINE PINES SUBDIVISION

(formerly Lots 12, 13, 14, 15, & 16 of Block 3 of Skyline Pines Subdivision)

LOCATED IN THE SW $\frac{1}{4}$   
SECTION 11, T1N, R7E, BHM  
RAPID CITY, PENNINGTON COUNTY, SOUTH DAKOTA



JUNE 28, 2002



SCALE 1" = 200'

**NOTES:**  
BUILDINGS ON ANY LOTS HAVING DRIVEWAYS EXCEEDING 15% SLOPE SHALL BE EQUIPPED WITH AN AUTOMATED RESIDENTIAL SPRINKLER SYSTEM SUBJECT TO APPROVAL BY THE RAPID CITY FIRE DEPARTMENT.

MAXIMUM DRIVEWAY SLOPE SHALL NOT EXCEED THE LIMITS ESTABLISHED IN THE RAPID CITY STREET CRITERIA MANUAL WITHOUT WRITTEN APPROVAL OF THE CITY OF RAPID CITY.

SPECIFIC GEOTECHNICAL AND SLOPE STABILITY INFORMATION MUST BE SUBMITTED TO THE CITY OF RAPID CITY FOR REVIEW AND APPROVAL PRIOR TO THE ISSUANCE OF ANY BUILDING PERMITS.



**Renner & Sperlich Engineering Co.**

616 Sixth St. • Rapid City, SD 57701 • 605/342-1191  
FAX: 605/342-1405 • E-MAIL: RSEC@RAPIDNET.COM

C:\Program Files\Land Desktop\DRAWINGS\1449PLAT\13r\_15r.dwg 06/28/02 03:37:08 PM MDT