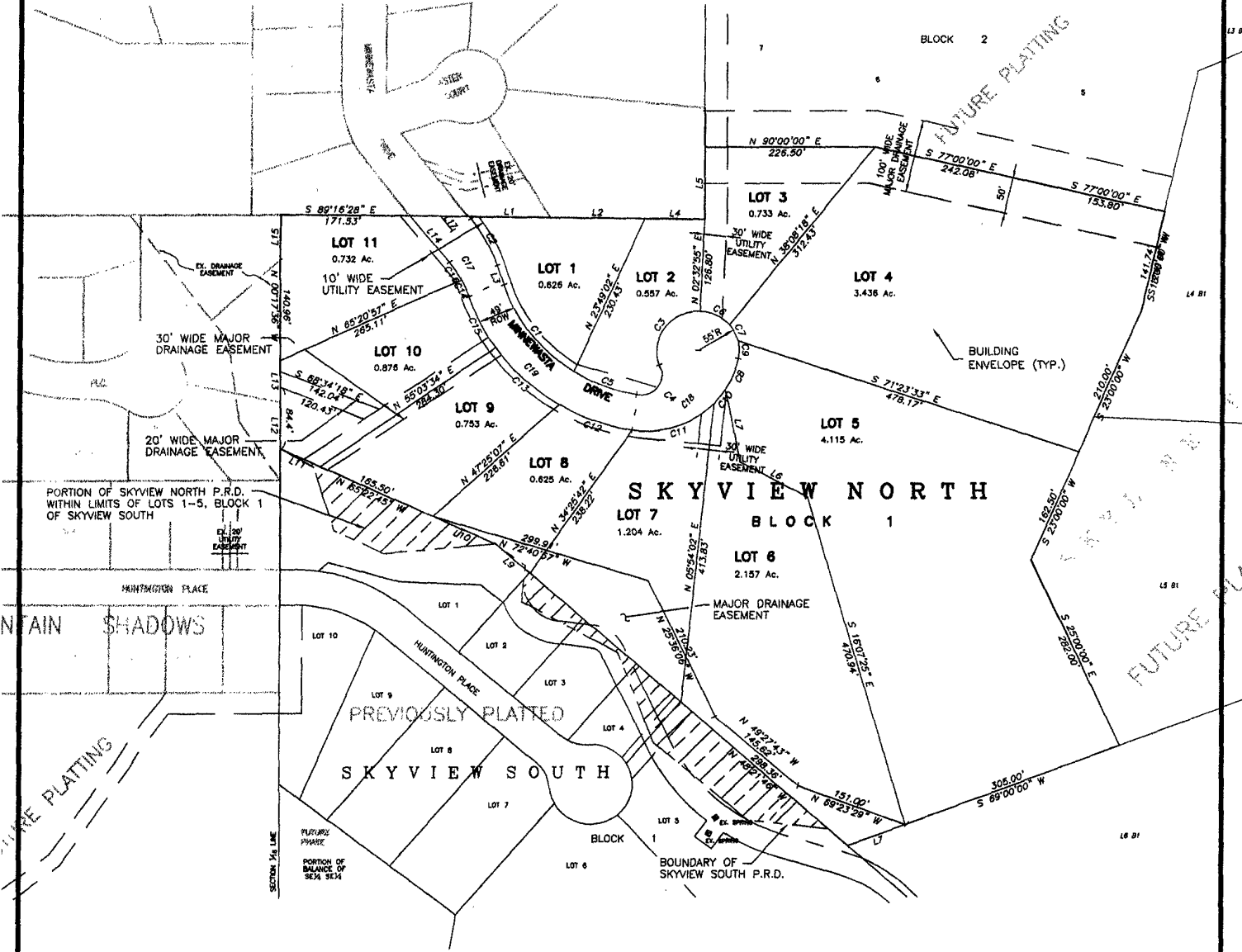


LOTS 1 - 11 OF BLOCK 1  
 SKYVIEW NORTH SUBDIVISION  
 LOCATED IN THE E $\frac{1}{2}$  OF THE SE $\frac{1}{4}$   
 SECTION 10, T1N, R7E, BHM  
 RAPID CITY, PENNINGTON COUNTY, SOUTH DAKOTA



SHADOWS

PLATTING

FUTURE PLATTING

FUTURE PLATTING



SEPTEMBER 21, 2000

BUILDINGS ON ANY LOTS HAVING DRIVEWAYS EXCEEDING 15% SLOPE SHALL BE EQUIPPED WITH AN AUTOMATED RESIDENTIAL SPRINKLER SYSTEM SUBJECT TO APPROVAL BY THE RAPID CITY FIRE DEPARTMENT

MAXIMUM DRIVEWAY SLOPE SHALL NOT EXCEED 16% UNLESS SPECIAL EXCEPTION TO THE RAPID CITY STREET CRITERIA MANUAL IS APPROVED

SPECIFIC GEOTECHNICAL AND SLOPE STABILITY INFORMATION MUST BE SUBMITTED TO THE CITY OF RAPID CITY FOR REVIEW AND APPROVAL PRIOR TO THE ISSUANCE OF ANY BUILDING PERMITS