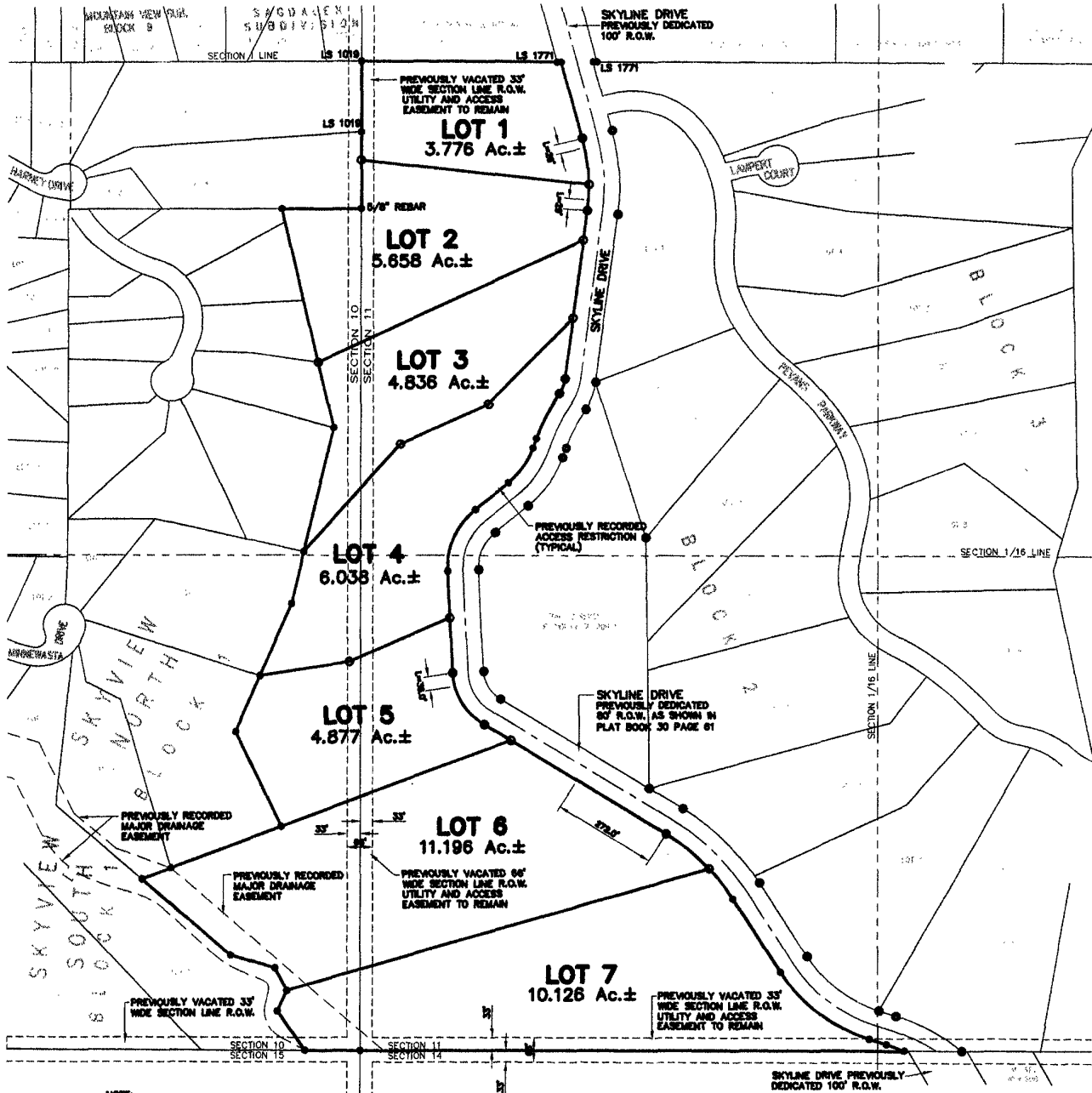


02VE017

# PLAT OF LOTS 1 THRU 7 OF BLOCK 1 SKYLINE PINES SUBDIVISION

(formerly Block 1 of Skyline Pines Subdivision)

LOCATED IN THE E½ OF THE SE¼ OF SECTION 10, THE SE¼ OF THE SW¼,  
AND THE W½ OF THE SW¼ OF SECTION 11, T1N, R7E, B.H.M.  
RAPID CITY, PENNINGTON COUNTY, SOUTH DAKOTA



NOTE:  
SEE PLAT BOOK 30 PAGE 61 FOR  
RECORD INFORMATION ON BLOCK 1  
AND SKYLINE DRIVE RIGHT-OF-WAY

NOTES:  
BUILDINGS ON ANY LOTS HAVING DRIVEWAYS EXCEEDING 15% SLOPE SHALL BE  
EQUIPPED WITH AN AUTOMATED RESIDENTIAL SPRINKLER SYSTEM SUBJECT TO  
APPROVAL BY THE RAPID CITY FIRE DEPARTMENT.

MAXIMUM DRIVEWAY SLOPE SHALL NOT EXCEED THE LIMITS ESTABLISHED IN  
THE RAPID CITY STREET CRITERIA MANUAL WITHOUT WRITTEN APPROVAL OF  
THE CITY OF RAPID CITY.

SPECIFIC GEOTECHNICAL AND SLOPE STABILITY INFORMATION MUST BE SUBMITTED  
TO THE CITY OF RAPID CITY FOR REVIEW AND APPROVAL PRIOR TO THE  
ISSUANCE OF ANY BUILDING PERMITS.



**Renner & Sperlich Engineering Co.**

616 Sixth St. • Rapid City, SD 57701 • 605/342-1191  
FAX: 605/342-1405 • E-MAIL: RSEC@RAPIDNET.COM

SEPTEMBER 19, 2001

0 200 400

SCALE 1" = 400'