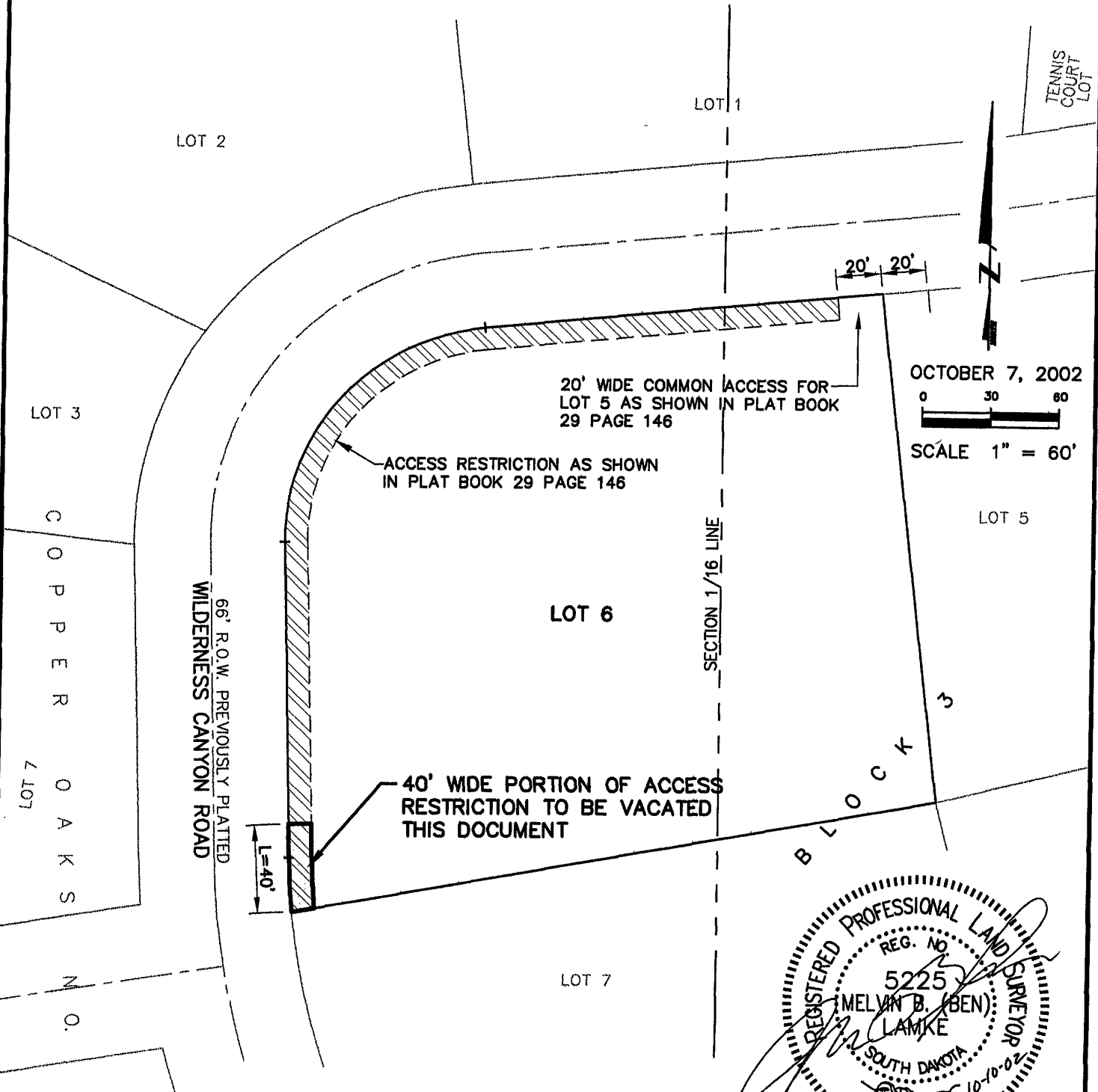


EXHIBIT 'A'  
**VACATION OF A PORTION OF AN ACCESS RESTRICTION**  
LOT 6 OF BLOCK 3 OF COPPER OAKS #3 SUBDIVISION

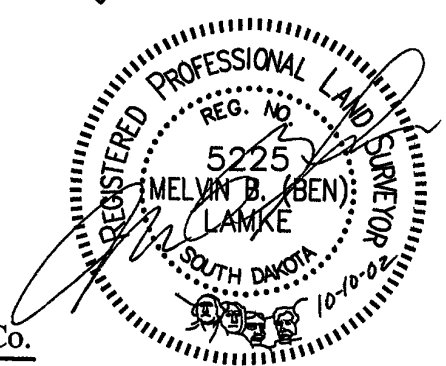
02VE015

LOCATED IN THE NE $\frac{1}{4}$   
SECTION 7, T1S, R7E, BHM  
PENNINGTON COUNTY, SOUTH DAKOTA



C O P P E R O A K S

B L O C K 3



**Renner & Sperlich Engineering Co.**

816 Sixth St. • Rapid City, SD 57701 • 605/342-1191  
FAX: 605/342-1405 • E-MAIL: RSEC@RAPIDNET.COM

DMM