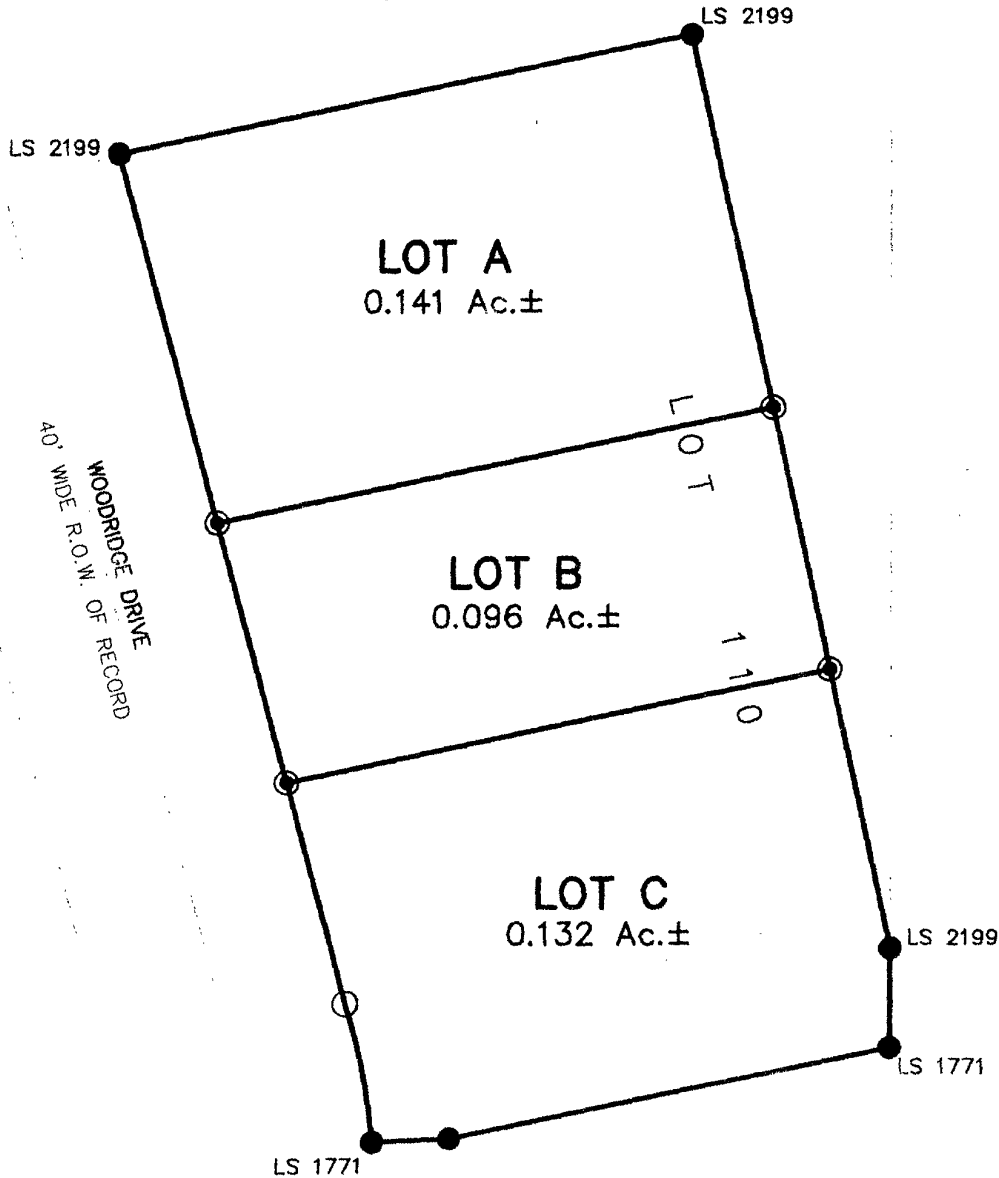


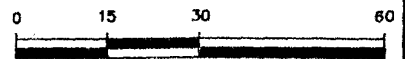
PLAT OF
LOTS A, B, & C OF LOT 110,
WOODRIDGE SUBDIVISION

(formerly Lot 110 of Woodridge Subdivision)

LOCATED IN THE NE¹/₄
SECTION 11, T1N, R7E, BHM
RAPID CITY, PENNINGTON COUNTY, SOUTH DAKOTA



SEPTEMBER 25, 2002



SCALE 1" = 30'



Renner & Sperlich Engineering Co.

616 Sixth St. * Rapid City, SD 57701 * 605/342-1191
FAX: 605/342-1405 * E-MAIL: RSEC@RAPIDNET.COM