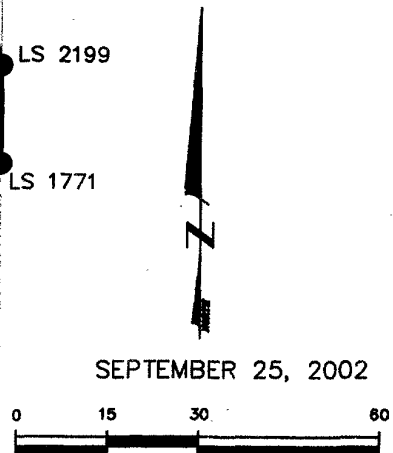
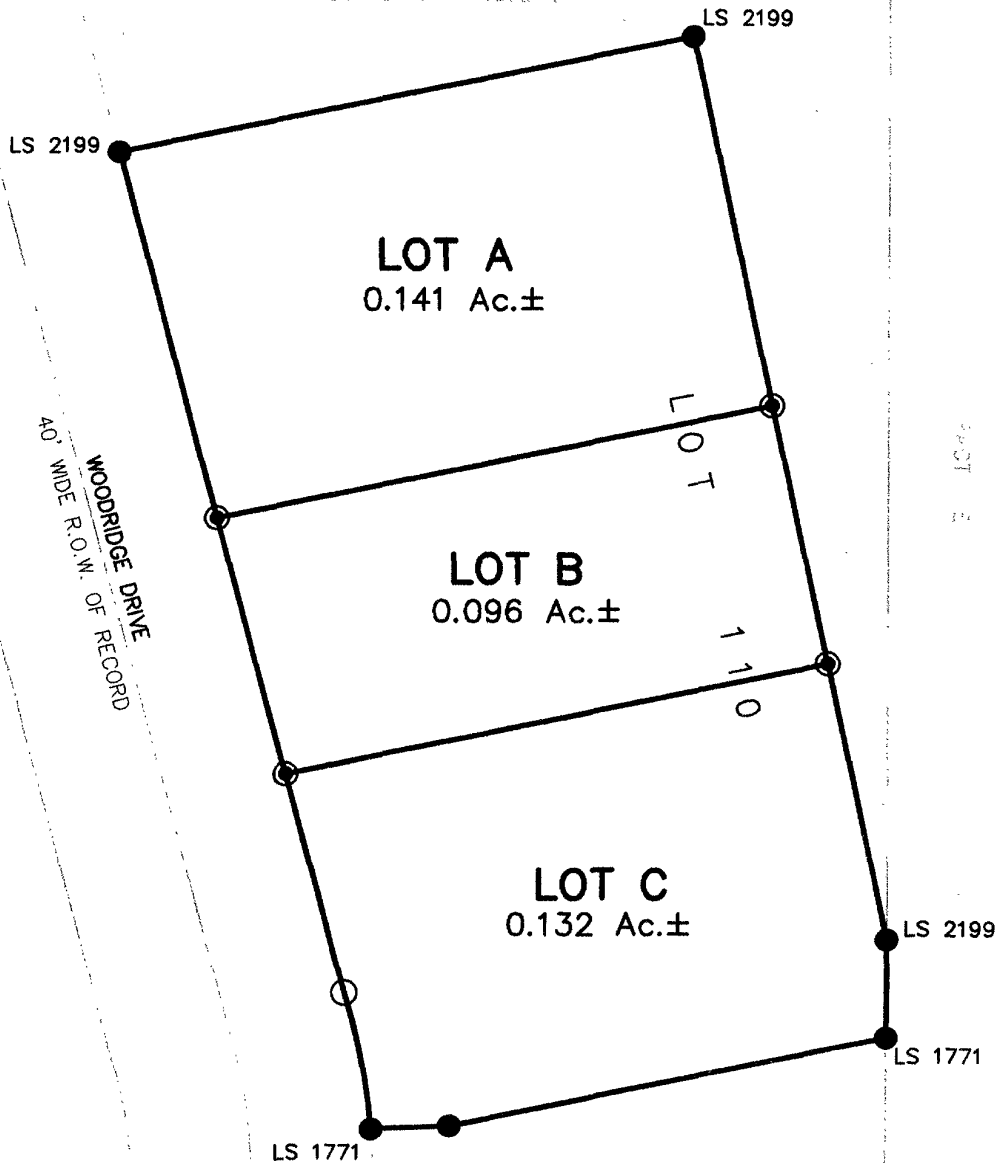


PLAT OF  
**LOTS A, B, & C OF LOT 110,  
WOODRIDGE SUBDIVISION**  
(formerly Lot 110 of Woodridge Subdivision)  
LOCATED IN THE NE¼  
SECTION 11, T1N, R7E, BHM  
RAPID CITY, PENNINGTON COUNTY, SOUTH DAKOTA



**Renner & Sperlich Engineering Co.**

616 Sixth St. \* Rapid City, SD 57701 \* 605/342-1191  
FAX: 605/342-1405 \* E-MAIL: RSEC@RAPIDNET.COM