

02PL091

PLAT OF
 LOTS 3R, 4AR AND 4BR OF BLOCK 4,
 (FORMERLY LOTS 3, 4A AND 4B OF BLOCK 4)
 OF PARK MEADOWS SUBDIVISION

LOCATED IN THE NE1/4 OF SE1/4
 SECTION 7, T1N, R8E, B.H.M.
 RAPID CITY, PENNINGTON COUNTY, SOUTH DAKOTA

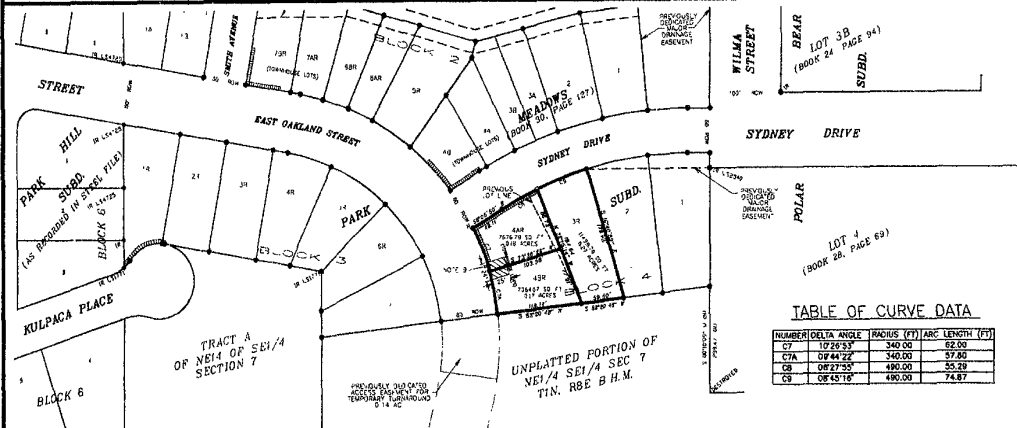


TABLE OF CURVE DATA

NUMBER	DELTA ANGLE	RADIUS (FT)	ARC LENGTH (FT)
C7	10°26'53"	340.00	62.00
C7A	0°44'22"	340.00	57.80
C8	0°27'55"	490.00	55.29
C9	0°45'18"	490.00	74.87

LEGEND

- SET 5/8" REBAR W/ CAP MARKED C.E.T.E.C. LS 4725
- SET 5/8" REBAR W/ CAP MARKED C.E.T.E.C. LS 4725 ROW P.C.'s, P.T.'s, AND EASEMENT CORNERS
- FOUND SURVEY MONUMENT
- (R) INDICATES DIMENSION PREVIOUSLY RECORDED
- (M) INDICATES DIMENSION MEASURED THIS SURVEY
- NON-ACCESS EASEMENT
- ACCESS EASEMENT



UNPLATTED PORTION OF
 NE1/4 SE1/4 SEC 7
 T1N, R8E B.H.M.

NOTES

- All major drainage easements shown hereon shall be kept free of all obstructions including but not limited to buildings, walls, fences, hedges, trees and shrubs. These easements grant to all public authorities the right to construct, operate, maintain, inspect and repair such improvements and structures as it deems expedient to facilitate drainage from any source.
- Building Setback requirements are as stated in the zoning and/or platting regulations.
- Utility and Minor Drainage Easements - 5' on the interior side of all front, side and rear lot lines, except for the common interior lot line between Lots 4AR and 4BR of Block 4.
- Lots 4AR and 4BR of Block 4 are reserved for development as townhouse lots in accordance with