

# VACATION OF A PORTION OF THE SIDEYARD UTILITY AND MINOR DRAINAGE EASEMENT

LOCATED IN SW<sup>1</sup>/<sub>4</sub> OF THE NE<sup>1</sup>/<sub>4</sub>  
SECTION 26, T1N, R7E, BHM  
RAPID CITY, PENNINGTON COUNTY, SOUTH DAKOTA

EDINBOROUGH DRIVE  
52' R.O.W. OF RECORD



JULY 10, 2002

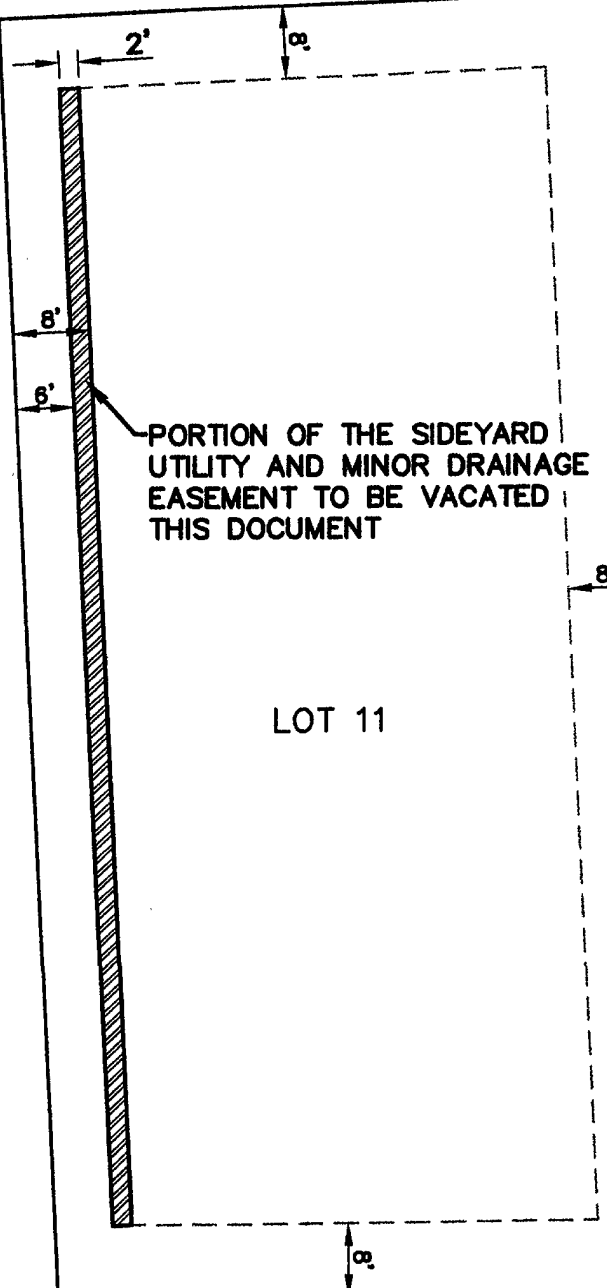


SCALE 1" = 20'

LOT 12

LOT 11

LOT 10



PORTION OF THE SIDEYARD  
UTILITY AND MINOR DRAINAGE  
EASEMENT TO BE VACATED  
THIS DOCUMENT

EXISTING 8' WIDE UTILITY AND  
MINOR DRAINAGE EASEMENT AS  
SHOWN IN PLAT BOOK 29 PAGE  
10.

