

EXHIBIT "A"

SHOWING A DRAINAGE EASEMENT BEING A PORTION OF LOT 6A, LOT 5
AND THE E1/2 OF LOT 4 OF THE RICE VALLEY VIEW PROPERTIES
ADDITION LOCATED IN SECTION 6, T1N, R8E, B.H.M., IN THE CITY OF
RAPID CITY, PENNINGTON COUNTY, SOUTH DAKOTA

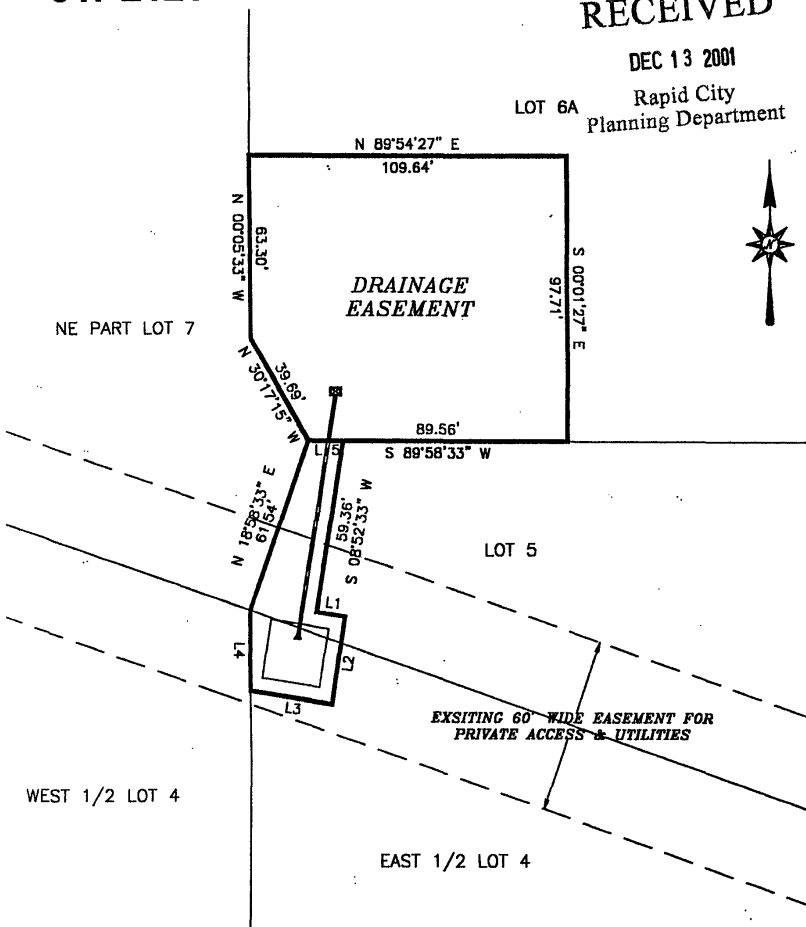
01PL123

RECEIVED

DEC 13 2001

LOT 6A

Rapid City
Planning Department



SCALE: 1" = 40' DECEMBER 13, 2001

LINE	BEARING	DISTANCE
L1	S 81° 07' 27" E	10.00'
L2	S 08° 52' 33" W	30.00'
L3	N 81° 07' 27" W	26.52'
L4	N 00° 00' 10" W	27.23'
L5	N 89° 58' 33" E	12.07'

SURVEYOR'S CERTIFICATE

I, JOHN M. ARLETH, R.L.S. 3977, DEADWOOD, SD, DO HEREBY CERTIFY THAT THE PROPERTY SHOWN HEREON WAS SURVEYED AND STAKED UNDER MY SUPERVISION AND THAT ALL DIMENSIONS ARE TRUE AND CORRECT TO THE BEST OF MY KNOWLEDGE AND BELIEF. DATED THIS _____ DAY OF _____, 20__

JOHN M. ARLETH, R.L.S. 3977

PREPARED BY: **ARLETH & ASSOCIATES**
382 MAIN STREET
DEADWOOD, SD 57732
605-678-1637

PROJECT: EXHIBIT "A"
DRAINAGE EASEMENT
JOB NO. 6661

DATE: DEC. 13, 2001
SCALE: 1" = 40'
DRAWN BY: T. VIC
APPROVED: JMA
DWG: 6661.DWG