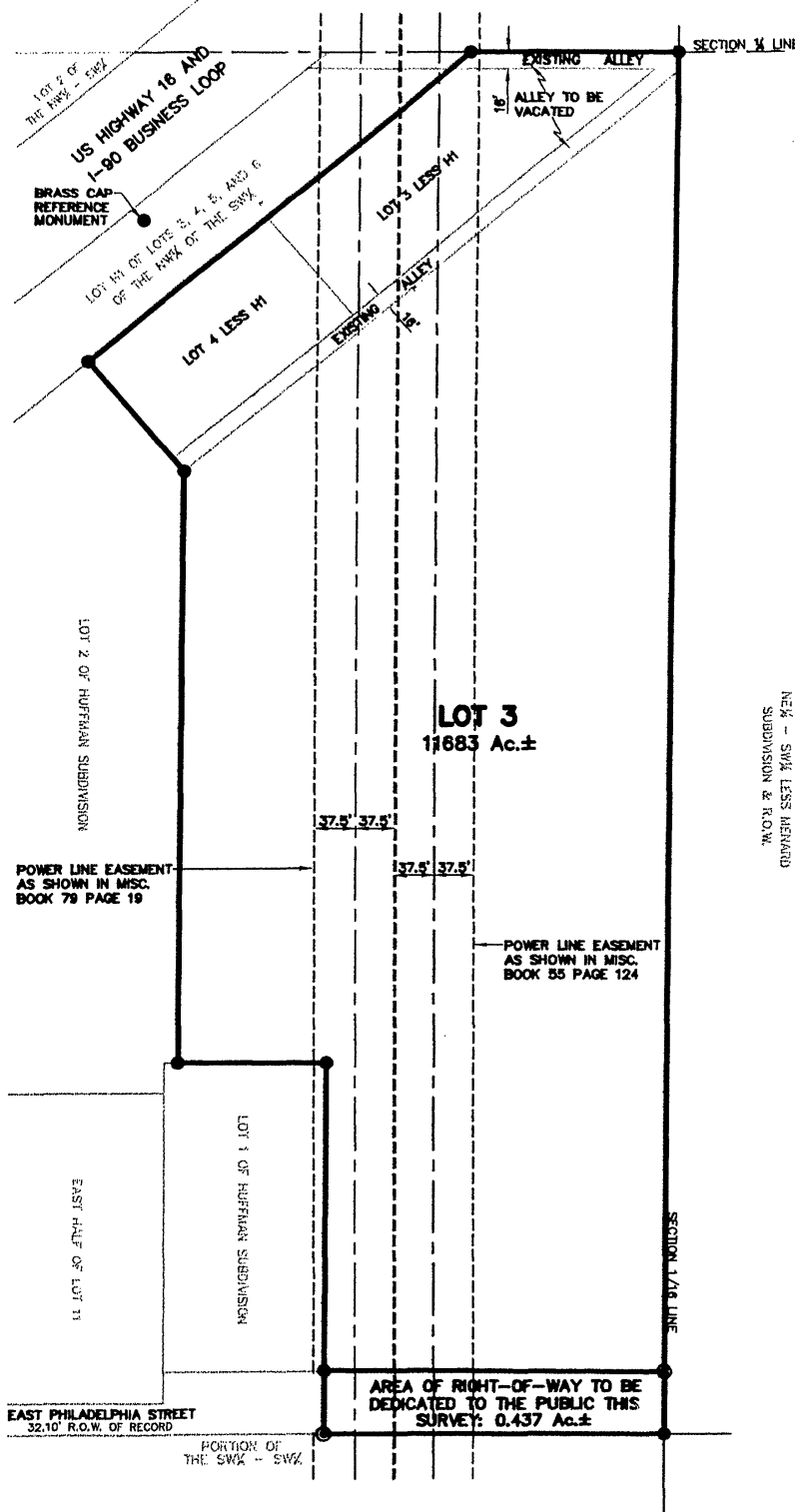



# PLAT OF LOT 3 OF HUFFMAN SUBDIVISION

(formerly Lots 3 & 4 of the NW1/4 of the SW1/4 of Section 32 less Lot H1 of Lots 3, 4, 5 & 6 of the NW1/4 of the SW1/4 Section 32, and the unplatted portion of the NW1/4 of the SW1/4 of Section 32 and the existing 16' wide alley)  
LOCATED IN THE NW1/4 OF THE SW1/4  
SECTION 32, T2N, R8E, BHM  
RAPID CITY, PENNINGTON COUNTY, SOUTH DAKOTA



  
 MARCH 25, 2002  
 N.T.S.



**Renner & Sperlich Engineering Co.**

616 Sixth St. \* Rapid City, SD 57701 \* 605/342-1191  
 FAX: 605/342-1405 \* E-MAIL: X19FIAT@AOL.COM

C:\Program Files\AutoCAD\Drawings\1448\1448REV.dwg 03/25/02 08:37:53 AM MST