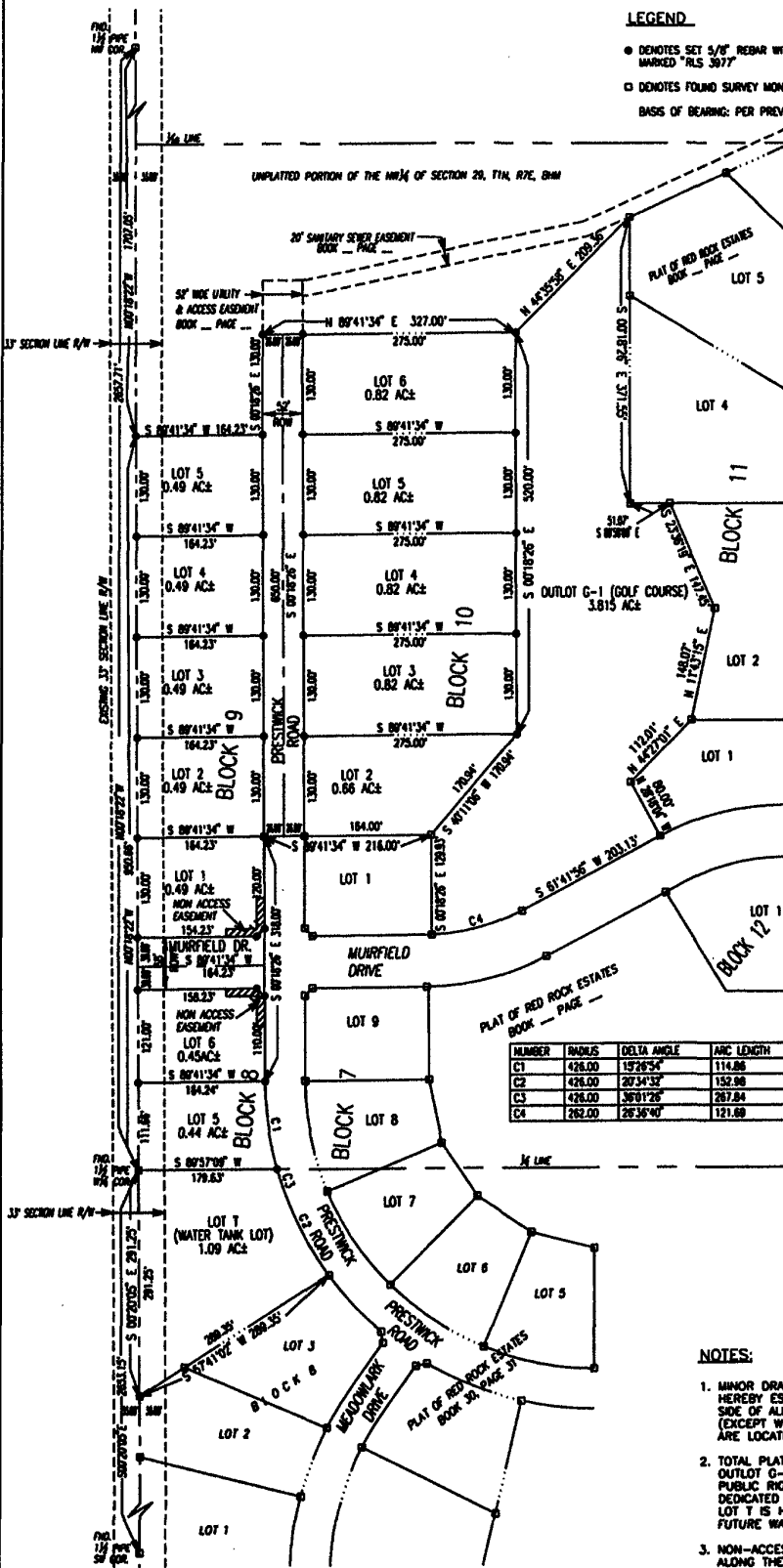
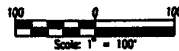


INCLUDING LOTS 5 THRU 6, BLOCK 8 AND LOTS 1 THRU 5, BLOCK 9 AND LOTS 2 THRU 6, BLOCK 10 AND LOT T BLOCK 8 AND OUTLOT G-1 AND DEDICATED STREETS  
 THE UNPLATTED PORTION OF SW<sup>1</sup>/<sub>4</sub> & THE UNPLATTED PORTION OF NW<sup>1</sup>/<sub>4</sub> SECTION 29, T1N, R7E, BHM  
 RAPID CITY, PENNINGTON COUNTY, SOUTH DAKOTA

**LEGEND**

- DENOTES SET 5/8" REBAR WITH SURVEY CAP MARKED "RLS 3977"
- DENOTES FOUND SURVEY MONUMENT
- BASIS OF BEARING: PER PREVIOUSLY RECORDED PLAT(S).



NUMBER	DIRECTION	DISTANCE
L1	N 49°41'34" E	14.14'
L2	N 45°18'26" W	14.14'

NUMBER	RADIUS	DELTA ANGLE	ARC LENGTH	TANGENT	CHORD DIRECTION	CHORD LENGTH
C1	428.00	15°26'54"	114.86	57.76	N 08°01'53" W	114.51
C2	428.00	20°34'32"	152.98	77.32	S 26°02'37" E	152.16
C3	428.00	36°01'26"	267.84	136.51	N 18°19'08" W	263.65
C4	262.00	26°36'40"	121.69	61.96	S 75°00'16" W	120.60

**NOTES:**

1. MINOR DRAINAGE AND UTILITY EASEMENTS ARE HEREBY ESTABLISHED 6' WIDE ON THE INTERIOR SIDE OF ALL LOT LINES AND EXTERIOR OF RIGHT-OF-WAY. (EXCEPT WHERE MAJOR DRAINAGE EASEMENTS ARE LOCATED)
2. TOTAL PLATTED AREA: 13,214 ACRES; LOTS: 8,387 ACRES. OUTLOT G-1 3,815 ACRES. PUBLIC RIGHT-OF-WAY: 1,035 ACRES DEDICATED FOR PUBLIC USE BY THIS PLAT. LOT T IS HEREBY DEDICATED AS "UTILITY LOT" FOR FUTURE WATER TANK
3. NON-ACCESS EASEMENTS ARE HEREBY ESTABLISHED ALONG THE FIRST FIFTY FEET OF CORNER LOTS OR AS INDICATED HEREON.
4. ALL BUILDERS SHALL MAINTAIN EXISTING DRAINAGE FACILITIES IN ACCORDANCE TO APPROVED CONSTRUCTION PLANS. (RAPID CITY ENR. DIV. REQUESTED NOTE)